

# PROPELLER SHAFT

Part No.	Description	Plate No.	No. per Unit	Remarks
C.7522	<b>PROPELLER SHAFT, COMPLETE</b>		1	
12	<b>Flange Yoke (K.2/2/239)</b>	46- 1	2	
46	<b>Journal Assembly, connecting Yokes to Propeller Shaft (K.5/L.4)</b>	46- 2	2	
13	<b>Sleeve Yoke (K.2/3/68)</b>	46- 3	1	
26	<b>Dust Cap (3/14/39)</b>	46- 4	1	
27	<b>Washer (Steel) in Dust Cap (K.3/15/33)</b>	46- 5	1	
28	<b>Washer (Cork) in Dust Cap (K.3/16/43)</b>	46- 6	1	
46	<b>JOURNAL ASSEMBLY, CONNECTING FLANGE YOKES TO PROPELLER SHAFT (K.5/L.4)</b>	46- 2	2	
14	<b>Journal only (K.2/5/GB.108)</b>	46- 7	2	
29	<b>Gasket, for Journals (K.3/86/89)</b>	46- 8	8	
21	<b>Retainer, for Gaskets (K.2/76/17)</b>	46- 9	8	
18	<b>Needle Bearing Assembly (K.2/6/38)</b>	46-10	8	
19	<b>Circlip, retaining Bearings (K.2/7/GB.19)</b>	46-11	8	
248	<b>Grease Nipple, on Journals (94/GB.1598)</b>	46-12	2	
C.3308	<b>Bolt, securing Propeller Shaft to Rear Axle and Gearbox Flanges</b>	46-13	8	
NN.737/L	<b>Nut, on Bolts</b>	46-14	8	
C.787	<b>Washer, on Bolts</b>	46-15	16	
L.102.5/8U	<b>Split Pin, securing Nuts</b>	46-16	8	
C.3044/1	<b>Grease Nipple, on Sleeve Yoke (Tec NA.6656)</b>	46-17	1	

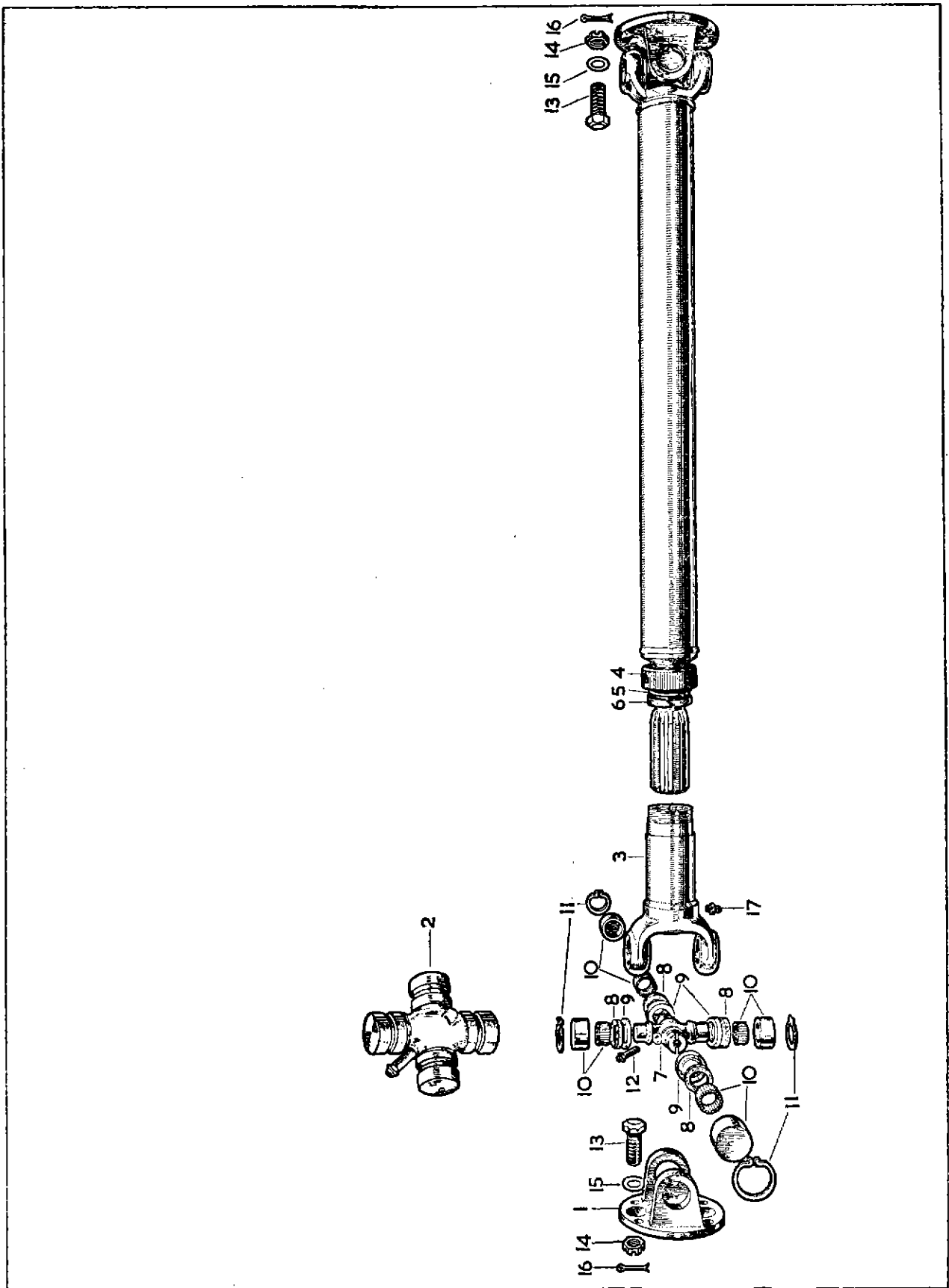


PLATE 46

# AUTOMATIC TRANSMISSION PROPELLER SHAFT

Part No.	Description	Plate No.	No. per Unit	Remarks
C.8833	<b>PROPELLER SHAFT, COMPLETE</b>		1	
12	<b>Flange Yoke (K.2/2/239)</b>	47- 1	2	
46	<b>Journal Assembly, connecting Yokes to Propeller Shaft (K.5/L.4)</b>	47- 2	2	
13	<b>Sleeve Yoke (K.2/3/68)</b>	47- 3	1	
26	<b>Dust Cap (3/14/39)</b>	47- 4	1	
27	<b>Washer (Steel) in Dust Cap (K.3/15/33)</b>	47- 5	1	
28	<b>Washer (Cork) in Dust Cap (K.3/16/43)</b>	47- 6	1	
46	<b>JOURNAL ASSEMBLY, CONNECTING FLANGE YOKES TO PROPELLER SHAFT (K.5/L.4)</b>	47- 2	2	
14	<b>Journal only (K.2/5/GB.108)</b>	47- 7	2	
29	<b>Gasket, for Journals (K.3/86/89)</b>	47- 8	8	
21	<b>Retainer, for Gaskets (K.2/76/17)</b>	47- 9	8	
18	<b>Needle Bearing Assembly (K.2/6/38)</b>	47-10	8	
19	<b>Circlip, retaining Bearings (K.2/7/GB.19)</b>	47-11	8	
248	<b>Grease Nipple, on Journals (94/GB.1598)</b>	47-12	2	
C.3308	<b>Bolt, securing Propeller Shaft to Rear Axle and Transmission Unit Flanges</b>	47-13	8	
NN.737/L	<b>Nut, on Bolts</b>	47-14	8	
C.787	<b>Washer, on Bolts</b>	47-15	16	
L.102.5/8U	<b>Split Pin, securing Nuts</b>	47-16	8	
C.3044/1	<b>Grease Nipple, on Sleeve Yoke (Tec NA.6656)</b>	47-17	1	

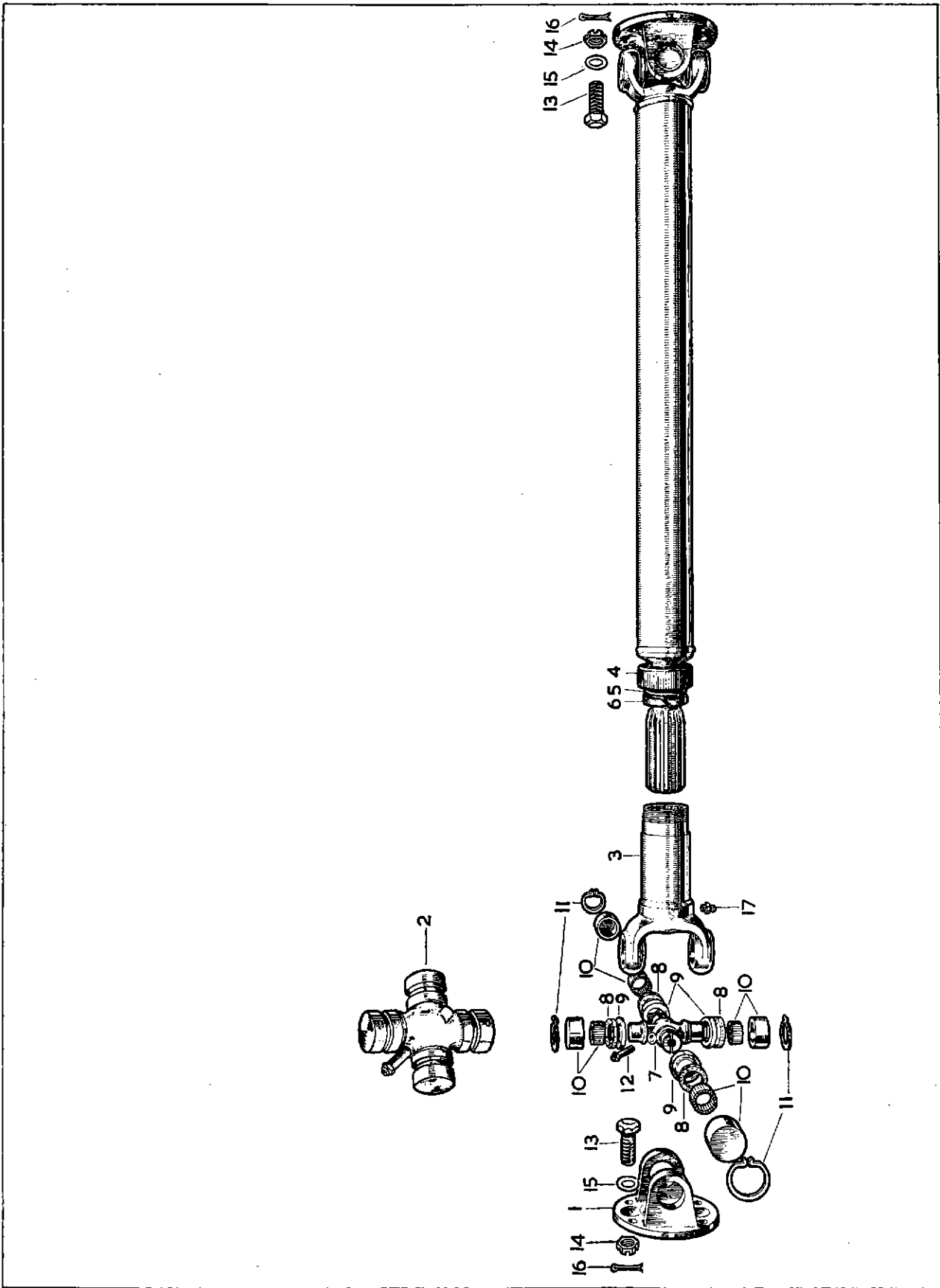


PLATE 47

# OVERDRIVE UNIT PROPELLER SHAFT

Part No.	Description	Plate No.	No. per Unit	Remarks
C.8259	<b>PROPELLER SHAFT, COMPLETE</b>		1	
12	<b>Flange Yoke (K.2/2/239)</b>	48- 1	2	
46	<b>Journal Assembly, connecting Yokes to Propeller Shaft (K.5/L.4)</b>	48- 2	2	
13	<b>Sleeve Yoke (K.2/3/68)</b>	48- 3	1	
26	<b>Dust Cap (3/14/39)</b>	48- 4	1	
27	<b>Washer (Steel) in Dust Cap (K.3/15/33)</b>	48- 5	1	
28	<b>Washer (Cork) in Dust Cap (K.3/16/43)</b>	48- 6	1	
46	<b>JOURNAL ASSEMBLY, CONNECTING FLANGE YOKES TO PROPELLER SHAFT (K.5/L.4)</b>	48- 2	2	
14	<b>Journal only (K.2/5/GB.108)</b>	48- 7	2	
29	<b>Gasket, for Journals (K.3/86/89)</b>	48- 8	8	
21	<b>Retainer, for Gaskets (K.2/76/17)</b>	48- 9	8	
18	<b>Needle Bearing Assembly (K.2/6/38)</b>	48-10	8	
19	<b>Circlip, retaining Bearings (K.2/7/GB.19)</b>	48-11	8	
248	<b>Grease Nipple, on Journals (94/GB.1598)</b>	48-12	2	
C.3308	<b>Bolt, securing Propeller Shaft to Rear Axle and Overdrive Unit Flanges</b>	48-13	8	
NN.737/L	<b>Nut, on Bolts</b>	48-14	8	
C.787	<b>Washer, on Bolts</b>	48-15	16	
L.102.5/8U	<b>Split Pin, securing Nuts</b>	48-16	8	
C.3044/1	<b>Grease Nipple, on Sleeve Yoke (Tec NA.6656)</b>	48-17	1	

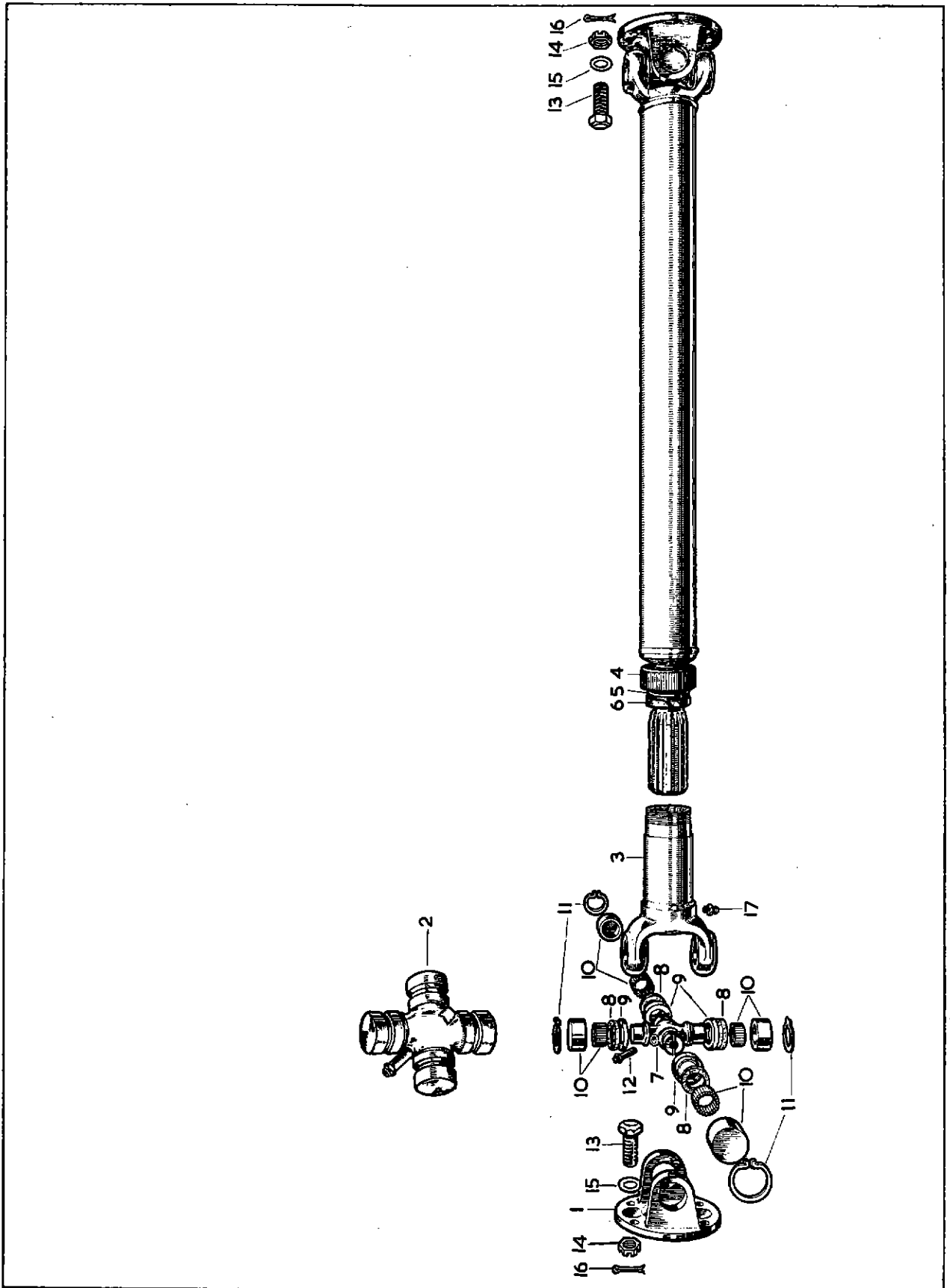


PLATE 48

# STANDARD OR AUTOMATIC TRANSMISSION REAR AXLE

Part No.	Description	Plate No.	No. per Unit	Remarks
C.12996	<b>REAR AXLE, COMPLETE (RATIO 3.54 : 1) (4HA-001/34)</b>		1	<b>FITTED AS STANDARD EQUIPMENT ON ALL 3.4 LITRE CARS AND ON 3.8 LITRE CARS TO U.S.A., CANADA AND MEXICO.</b>
7014	Carrier and Tube Assembly (4HA-101/26)	49- 1	1	
74	Screw, Set, securing Differential Bearing Caps (8B-NC.36)	49- 2	4	
C.728	Washer, Shakeproof, on Setscrews (8LW-115)	49- 3	4	
3930	Cover for Carrier (4HA-010)	49- 4	1	
3823	Plug, for Filler and Drain Apertures (HA-059)	49- 5	2	
3931	Gasket, for Cover (4HA-026)	49- 6	1	
CS.131/5D	Screw, Set, securing Cover (5B-NC.10)	49- 7	10	
47	Lockwasher on Setscrews (5LV-95)	49- 8	10	
6311	Differential Case Assembly (4HA-082/6)		1	
3845	Roller Bearing, on Differential Case, (Timken 24780-24721) (2HA-024)	49- 9	2	
3935	Shim, adjusting Differential (.003" thick) (4HA-046)	49-10	As req'd	} <b>USE SHIM OF DESIRED THICKNESS.</b>
3936	Shim, adjusting Differential (.005" thick) (4HA-047)	49-10	As req'd	
3937	Shim, adjusting Differential (.010" thick) (4HA-048)	49-10	As req'd	
3938	Shim, adjusting Differential (.030" thick) (4HA-049)	49-10	As req'd	
6305	Crown Wheel and Pinion (Ratio 3.54 : 1) (4HA-105/9A)	49-11	1	
6301	Screw, Set, securing Crown Wheel to Differential Case (3HA-075/6)	49-12	10	
6316	Lock Strap, securing Crown Wheel Setscrews (4HA-074/2)	49-13	5	
3844	Roller Bearing, at inner end of Pinion (Timken 31593-31520) (2HA-023)	49-14	1	
3860	Shim, inner, adjusting Pinion (.003" thick) (2HA-043)	49-15	As req'd	} <b>USE SHIM OF DESIRED THICKNESS.</b>
3861	Shim, inner, adjusting Pinion (.005" thick) (2HA-044)	49-15	As req'd	
3862	Shim, inner, adjusting Pinion (.010" thick) (2HA-045)	49-15	As req'd	
8029	Distance Washer, behind outer Pinion Shims (4HA-115)	49-16	1	
3856	Shim, outer, adjusting Pinion (.003" thick) (2HA-039)	49-17	As req'd	} <b>USE SHIM OF DESIRED THICKNESS.</b>
3857	Shim, outer, adjusting Pinion (.005" thick) (2HA-040)	49-17	As req'd	
3858	Shim, outer, adjusting Pinion (.010" thick) (2HA-041)	49-17	As req'd	
3859	Shim, outer, adjusting Pinion (.030" thick) (2HA-042)	49-17	As req'd	
3843	Roller Bearing, at outer end of Pinion (Timken 02872-02820) (2HA-022)	49-18	1	
3934	Oil Slinger on Pinion (4HA-036)	49-19	1	
3840	Oil Seal, on Pinion (2HA-019)	49-20	1	
3841	Gasket, for Pinion Oil Seal (2HA-020)	49-21	1	
3879	Companion Flange Assembly (2HA-083)	49-22	1	
115	Nut, securing Companion Flange to Pinion (12LN-NF.9)	49-23	1	
114	Washer, under Nut (12W-24)	49-24	1	
3924	Shaft (4HA-005/18)	49-25	2	
C.970/1	Grease Nipple, on Axle Tubes (Tec NA.6673)	49-26	2	
C.12997	<b>REAR AXLE, COMPLETE (RATIO 3.31 : 1)</b>		1	<b>ALTERNATIVE TO C.12996.</b>
6304	Crown Wheel and Pinion (4HA-105/8A)	49-11	1	
<b>For all other items, please refer to Rear Axle C.12996</b>				

# STANDARD OR AUTOMATIC TRANSMISSION REAR AXLE

Part No.	Description	Plate No.	No. per Unit	Remarks
C.12998	<b>REAR AXLE, COMPLETE (RATIO 4.27 : 1)</b>		1	<b>ALTERNATIVE TO C.12996.</b>
6309	<b>Crown Wheel and Pinion (4HA-105/12A)</b>	49-11	1	
6312	<b>Differential Case Assembly (4HA-082/7)</b>		1	
	<b>For all other items, please refer to Rear Axle C.12996</b>			
6311	<b>DIFFERENTIAL CASE ASSEMBLY (4HA-082/6)</b>		1	<b>FOR USE WITH 3.54 : 1 OR 3.31 : 1 CROWN WHEEL AND PINION.</b>
6313	<b>Case only, for Differential (4HA-006/4)</b>	49-27	1	
3929	<b>Side Gear, for Differential (4HA-007)</b>	49-28	2	
3855	<b>Thrust Washer, for Side Gears (2HA-038)</b>	49-29	2	
3835	<b>Gear, Differential Pinion Mate (2HA-008/1)</b>	49-30	2	
3854	<b>Thrust Washer, for Pinion Mate Gears (2HA-037)</b>	49-31	2	
3837	<b>Shaft, for Pinion Mate Gears (2HA-012)</b>	49-32	1	
3932	<b>Spacer, on Shaft (4HA-033)</b>	49-33	1	
3838	<b>Pin, locking Pinion Mate Gear Shaft in Differential Case (2HA-013)</b>	49-34	1	
6312	<b>DIFFERENTIAL CASE ASSEMBLY (4HA-082/7)</b>		1	<b>FOR USE WITH 4.27 : 1 CROWN WHEEL AND PINION.</b>
6314	<b>Case only, for Differential (4HA-006/5)</b>	49-27	1	
	<b>For all other items, please refer to Differential Case Assembly 6311</b>			
3879	<b>PINION COMPANION FLANGE ASSEMBLY (2HA-083)</b>	49-22	1	
3842	<b>Dust Shield, for Companion Flange (2HA-021)</b>		1	
3924	<b>REAR AXLE SHAFT (4HA-005/18)</b>	49-25	2	
C.7356	<b>Key, locating Hubs on Axle Shafts (2HA-029)</b>	49-35	2	
3848	<b>Oil Seal, in ends of Carrier Tube, for Axle Shafts (2HA-027)</b>	49-36	2	
3846	<b>Roller Bearing, for Hubs (2HA-025)</b>	49-37	2	
131	<b>Slotted Nut, securing Hubs to Axle Shafts (16SN-NF10)</b>	49-38	2	
133	<b>Washer, under Slotted Nuts (16W-31)</b>	49-39	2	
L.104/14U	<b>Split Pin, retaining Nuts (8SP-14A)</b>	49-40	2	



# STANDARD OR AUTOMATIC TRANSMISSION REAR AXLE

Part No.	Description	Plate No.	No. per Unit	Remarks
C.12935	<b>R.H. REAR CALIPER ADAPTOR PLATE</b>		1	} Fitted from Chassis No. 820001 to 820070 830001 to 832119 827001 to 827539 837001 to 838753 824001 to 825178 834001 to 836743
C.12936	<b>L.H. REAR CALIPER ADAPTOR PLATE</b>		1	
C.16587	<b>R.H. REAR CALIPER ADAPTOR PLATE</b>		1	} Fitted to Chassis No. 820071 and subs. 832120 and subs. 827540 and subs. 838754 and subs. 825179 and subs. 836744 and subs.
C.16588	<b>L.H. REAR CALIPER ADAPTOR PLATE</b>		1	
UFB.137/9R	<b>Bolt</b> , securing Adaptor Plates to Axle Flanges		10	} <b>USE SHIM OF DESIRED THICKNESS.</b>
C.8667/3	<b>Nut</b> , Self-Locking, on Bolts		10	
3867	<b>Shim</b> , adjusting Hub Bearing (.003" thick) (2HA-050)	49-41	As req'd	
3868	<b>Shim</b> , adjusting Hub Bearing (.005" thick) (2HA-051)	49-41	As req'd	
3869	<b>Shim</b> , adjusting Hub Bearing (.010" thick) (2HA-052)	49-41	As req'd	
3870	<b>Shim</b> , adjusting Hub Bearing (.030" thick) (2HA-053)	49-41	As req'd	
C.1483	<b>Gasket</b> , behind Oil Seals (2HA-031)	49-42	2	
7955	<b>OIL SEAL ASSEMBLY, FOR HUBS</b> (4HA-057/5)	49-43	2	
C.12931	<b>REAR HUB ASSEMBLY</b>		2	<b>FOR USE WHEN DISC ROAD WHEELS ARE FITTED.</b>
C.13365	<b>Stud</b> , in Hubs, for fixing of Road Wheels		10	
C.12933	<b>R.H. REAR HUB</b>		1	} <b>FOR USE WITH WIRE SPOKE ROAD WHEELS.</b>
C.12934	<b>L.H. REAR HUB</b>		1	

# STANDARD OR AUTOMATIC TRANSMISSION REAR AXLE

Part No.	Description	Plate No.	No. per Unit	Remarks
C.1102	R.H. HUB CAP		1	} FOR USE WHEN WIRE SPOKE ROAD WHEELS ARE FITTED. NOT REQUIRED FOR CARS EXPORTED TO GERMANY.
C.1103	L.H. HUB CAP		1	
C.14891	R.H. HUB CAP		1	} FOR USE WHEN WIRE SPOKE WHEELS ARE FITTED ON CARS EXPORTED TO GERMANY.
C.14892	L.H. HUB CAP		1	
C.14927	TOOL FOR REMOVING AND FITTING HUB CAPS		1	
C.7860	CLIP, RETAINING BRAKE PIPES		2	
UFS.325/8H	Screw, Set, securing Clips to Rear Axle		2	
UFN.125/L	Nut, on Setscrews		2	
C.724	Washer, Shakeproof, under Nuts		2	

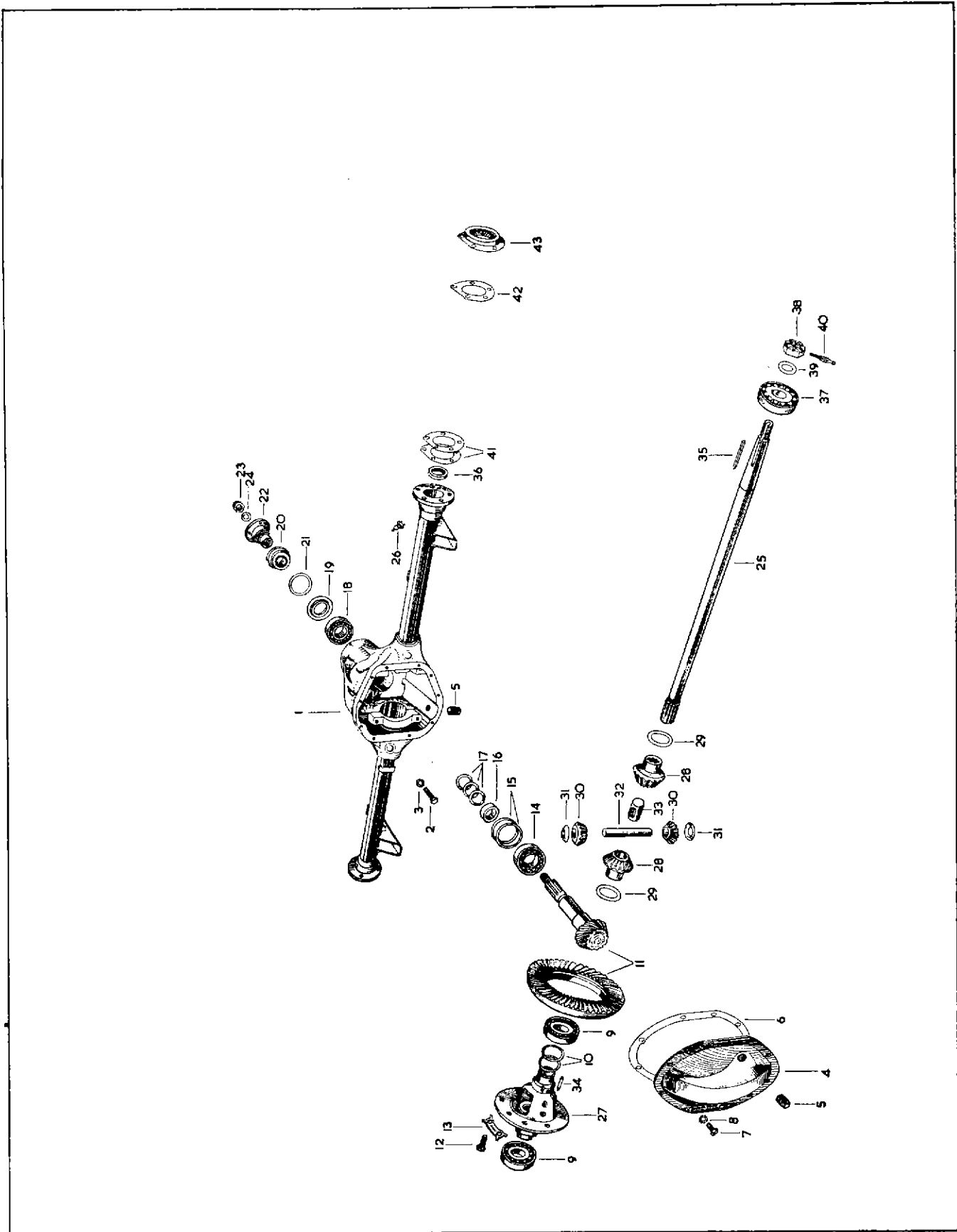


PLATE 49

# OVERDRIVE UNIT REAR AXLE

Part No.	Description	Plate No.	No. per Unit	Remarks
C.12999	<b>REAR AXLE, COMPLETE (RATIO 4.09 : 1)</b>		1	<b>FITTED AS STANDARD EQUIPMENT ON ALL 3.4 LITRE CARS AND ON 3.8 LITRE CARS TO U.S.A., CANADA AND MEXICO.</b>
7014	Carrier and Tube Assembly (4HA-101/26)	50- 1	1	
74	Screw, Set, securing Differential Bearing Caps (8B-NC.36)	50- 2	4	
C.728	Washer, Shakeproof, on Setscrews (8LW-115)	50- 3	4	
3930	Cover, for Carrier (4HA-010)	50- 4	1	
3823	Plug, for Filler and Drain Apertures (HA-059)	50- 5	2	
3931	Gasket, for Cover (4HA-026)	50- 6	1	
CS.131/5D	Screw, Set, securing Cover (5B-NC.10)	50- 7	10	
47	Lockwasher, on Setscrews (5LW-95)	50- 8	10	
6312	Differential Case Assembly (4HA-082/7)		1	
3845	Roller Bearing, on Differential Case (Timken 24780-24721) (2HA-024)	50- 9	2	
3935	Shim, adjusting Differential (.003" thick) (4HA-046)	50-10	As req'd	} <b>USE SHIM OF DESIRED THICKNESS.</b>
3936	Shim, adjusting Differential (.005" thick) (4HA-047)	50-10	As req'd	
3937	Shim, adjusting Differential (.010" thick) (4HA-048)	50-10	As req'd	
3938	Shim, adjusting Differential (.030" thick) (4HA-049)	50-10	As req'd	
6308	Crown Wheel and Pinion (Ratio 4.09 : 1) (4HA-105/13C)	50-11	1	
6301	Screw, Set, securing Crown Wheel to Differential Case (3HA-075/6)	50-12	10	
6316	Lock Strap, securing Crown Wheel Setscrews (4HA-074/2)	50-13	5	
3844	Roller Bearing, at inner end of Pinion (Timken 31593-31520) (2HA-023)	50-14	1	
3860	Shim, inner, adjusting Pinion (.003" thick) (2HA-043)	50-15	As req'd	} <b>USE SHIM OF DESIRED THICKNESS.</b>
3861	Shim, inner, adjusting Pinion (.005" thick) (2HA-044)	50-15	As req'd	
3862	Shim, inner, adjusting Pinion (.010" thick) (2HA-045)	50-15	As req'd	
8029	Distance Washer, behind outer Pinion Shims (4HA-115)	50-16	1	
3856	Shim, outer, adjusting Pinion (.003" thick) (2HA-039)	50-17	As req'd	} <b>USE SHIM OF DESIRED THICKNESS.</b>
3857	Shim, outer, adjusting Pinion (.005" thick) (2HA-040)	50-17	As req'd	
3858	Shim, outer, adjusting Pinion (.010" thick) (2HA-041)	50-17	As req'd	
3859	Shim, outer, adjusting Pinion (.030" thick) (2HA-042)	50-17	As req'd	
3843	Roller Bearing, at outer end of Pinion (Timken 02872-02820) (2HA-022)	50-18	1	
3934	Oil Slinger on Pinion (4HA-036)	50-19	1	
3840	Oil Seal, on Pinion (2HA-019)	50-20	1	
3841	Gasket, for Pinion Oil Seal (2HA-020)	50-21	1	
3879	Companion Flange Assembly (2HA-083)	50-22	1	
115	Nut, securing Companion Flange to Pinion (12LN-NF.9)	50-23	1	
114	Washer, under Nut (12W-24)	50-24	1	
3924	Shaft (4HA-005/18)	50-25	2	
C.970/1	Grease Nipple, on Axle Tubes (Tec NA.6673)	50-26	2	
6312	<b>DIFFERENTIAL CASE ASSEMBLY (4HA-082/7)</b>		1	
6314	Case only, for Differential (4HA-006/5)	50-27	1	
3929	Side Gear, for Differential (4HA-007)	50-28	2	
3855	Thrust Washer, for Side Gears (2HA-038)	50-29	2	
3835	Gear, Differential Pinion Mate (2HA-008/1)	50-30	2	
3854	Thrust Washer, for Pinion Mate Gears (2HA-037)	50-31	2	
3837	Shaft, for Pinion Mate Gears (2HA-012)	50-32	1	
3932	Spacer, on Shaft (4HA-033)	50-33	1	
3838	Pin, locking Pinion Mate Gear Shaft in Differential Case (2HA-013)	50-34	1	

# OVERDRIVE UNIT REAR AXLE

Part No.	Description	Plate No.	No. per Unit	Remarks
3879	<b>PINION COMPANION FLANGE ASSEMBLY (2HA-083)</b>	50-22	1	
3842	<b>Dust Shield for Companion Flange (2HA-021)</b>		1	
3924	<b>REAR AXLE SHAFT (4HA-005/18)</b>	50-25	2	
C.7356	<b>Key, locating Hubs on Axle Shafts (2HA-029)</b>	50-35	2	
3848	<b>Oil Seal, in ends of Carrier Tube, for Axle Shafts (2HA-027)</b>	50-36	2	
3846	<b>Roller Bearing, for Hubs (2HA-025)</b>	50-37	2	
131	<b>Slotted Nut, securing Hubs to Axle Shafts (16SN-NF.10)</b>	50-38	2	
133	<b>Washer, under Slotted Nuts (16W-31)</b>	50-39	2	
L.104/14U	<b>Split Pin, retaining Nuts (8SP-14.A)</b>	50-40	2	
C.12935	<b>R.H. REAR CALIPER ADAPTOR PLATE</b>		1	} Fitted from Chassis No. 820001 to 820070 830001 to 832119 827001 to 827539 837001 to 838753 824001 to 825178 834001 to 836743
C.12936	<b>L.H. REAR CALIPER ADAPTOR PLATE</b>		1	
C.16587	<b>R.H. REAR CALIPER ADAPTOR PLATE</b>		1	} Fitted to Chassis No. 820071 and subs. 832120 and subs. 827540 and subs. 838754 and subs. 825179 and subs. 836744 and subs.
C.16588	<b>L.H. REAR CALIPER ADAPTOR PLATE</b>		1	
UFB.137/9R	<b>Bolt, securing Adaptor Plates to Rear Axle Flanges</b>		10	} <b>USE SHIM OF DESIRED THICKNESS.</b>
C.8667/3	<b>Nut, Self Locking, on Bolts</b>		10	
3867	<b>Shim, adjusting Hub Bearing (.003" thick) (2HA-050)</b>	50-41	As req'd	
3868	<b>Shim, adjusting Hub Bearing (.005" thick) (2HA-051)</b>	50-41	As req'd	
3869	<b>Shim, adjusting Hub Bearing (.010" thick) (2HA-052)</b>	50-41	As req'd	
3870	<b>Shim, adjusting Hub Bearing (.030" thick) (2HA-053)</b>	50-41	As req'd	
C.1483	<b>Gasket, behind Oil Seals (2HA-031)</b>	50-42	2	
7955	<b>OIL SEAL ASSEMBLY FOR HUBS (4HA-057/5)</b>	50-43	2	

# OVERDRIVE UNIT REAR AXLE

Part No.	Description	Plate No.	No. per Unit	Remarks
3879	<b>PINION COMPANION FLANGE ASSEMBLY (2HA-083)</b>	50-22	1	
3842	Dust Shield for Companion Flange (2HA-021)		1	
3924	<b>REAR AXLE SHAFT (4HA-005/18)</b>	50-25	2	
C.7356	Key, locating Hubs on Axle Shafts (2HA-029)	50-35	2	
3848	Oil Seal, in ends of Carrier Tube, for Axle Shafts (2HA-027)	50-36	2	
3846	Roller Bearing, for Hubs (2HA-025)	50-37	2	
131	Slotted Nut, securing Hubs to Axle Shafts (16SN-NF.10)	50-38	2	
133	Washer, under Slotted Nuts (16W-31)	50-39	2	
L.104/14U	Split Pin, retaining Nuts (8SP-14.A)	50-40	2	
C.12935	<b>R.H. REAR CALIPER ADAPTOR PLATE</b>		1	} Fitted from Chassis No. 820001 to 820070 830001 to 832119 827001 to 827539 837001 to 838753 824001 to 825178 834001 to 836743
C.12936	<b>L.H. REAR CALIPER ADAPTOR PLATE</b>		1	
C.16587	<b>R.H. REAR CALIPER ADAPTOR PLATE</b>		1	} Fitted to Chassis No. 820071 and subs. 832120 and subs. 827540 and subs. 838754 and subs. 825179 and subs. 836744 and subs.
C.16588	<b>L.H. REAR CALIPER ADAPTOR PLATE</b>		1	
UFB.137/9R	Bolt, securing Adaptor Plates to Rear Axle Flanges		10	} <b>USE SHIM OF DESIRED THICKNESS.</b>
C.8667/3	Nut, Self Locking, on Bolts		10	
3867	Shim, adjusting Hub Bearing (.003" thick) (2HA-050)	50-41	As req'd	
3868	Shim, adjusting Hub Bearing (.005" thick) (2HA-051)	50-41	As req'd	
3869	Shim, adjusting Hub Bearing (.010" thick) (2HA-052)	50-41	As req'd	
3870	Shim, adjusting Hub Bearing (.030" thick) (2HA-053)	50-41	As req'd	
C.1483	Gasket, behind Oil Seals (2HA-031)	50-42	2	
7955	<b>OIL SEAL ASSEMBLY FOR HUBS (4HA-057/5)</b>	50-43	2	

# OVERDRIVE UNIT

## REAR AXLE

Part No.	Description	Plate No.	No. per Unit	Remarks
C.12931	<b>REAR HUB ASSEMBLY</b>		2	<b>FOR USE WHEN DISC ROAD WHEELS ARE FITTED.</b>
C.13365	Stud, In Hubs, for fixing of Road Wheels		10	
C.12933	<b>R.H. REAR HUB</b>		1	<b>FOR USE WITH WIRE SPOKE ROAD WHEELS.</b>
C.12934	<b>L.H. REAR HUB</b>		1	
C.1102	<b>R.H. HUB CAP</b>		1	<b>FOR USE WHEN WIRE SPOKE ROAD WHEELS ARE FITTED. NOT REQUIRED FOR CARS EXPORTED TO GERMANY.</b>
C.1103	<b>L.H. HUB CAP</b>		1	
C.14891	<b>R.H. HUB CAP</b>		1	<b>REQUIRED FOR CARS EXPORTED TO GERMANY WHEN WIRE SPOKE WHEELS ARE FITTED.</b>
C.14892	<b>L.H. HUB CAP</b>		1	
C.14927	<b>TOOL FOR REMOVING AND FITTING HUB CAPS</b>		1	
C.7860	<b>CLIP, RETAINING BRAKE PIPES</b>		2	
UFS.325/8H	Screw, Set, securing Clips to Rear Axle		2	
UFN.125/L	Nut, on Setscrews		2	
C.724	Washer, Shakeproof, under Nuts		2	

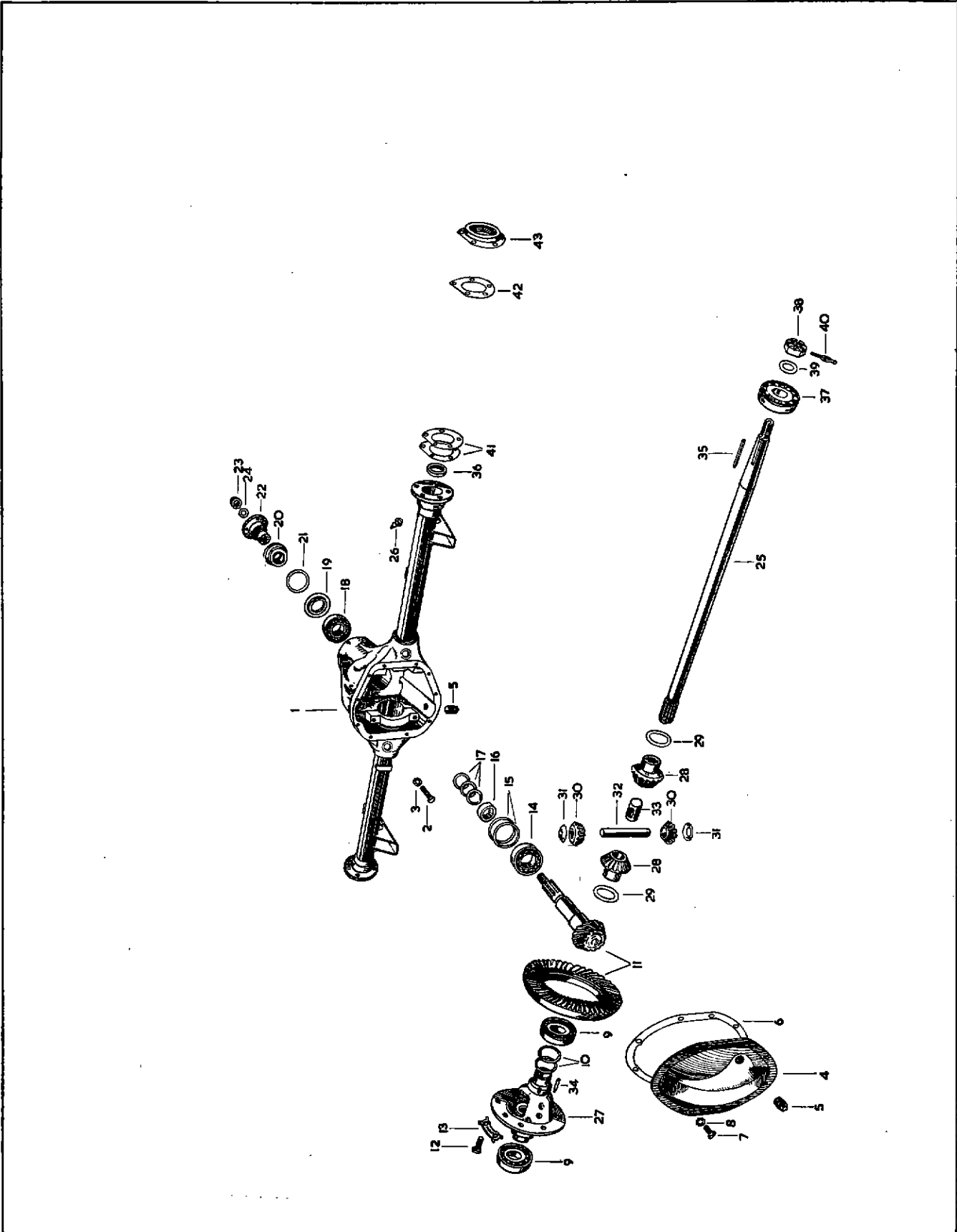


PLATE 50



# STANDARD OR AUTOMATIC TRANSMISSION

## REAR AXLE

WITH THORNTON "POWR-LOK" DIFFERENTIAL

Part No.	Description	Plate No.	No. per Unit	Remarks
C.13717	<b>REAR AXLE, COMPLETE (RATIO 3.54 : 1)</b>		1	<b>FITTED AS STANDARD EQUIPMENT ON 3.8 LITRE CARS EXCEPT THOSE FOR U.S.A., CANADA AND MEXICO. SUPPLIED TO SPECIAL ORDER ONLY, FOR 3.8 LITRE CARS EXPORTED TO U.S.A., CANADA AND MEXICO, AND FOR 3.4 LITRE CARS IRRESPECTIVE OF COUNTRY.</b>
7014	<b>Carrier and Tube Assembly (4HA-101/26)</b>	51- 1	1	
74	<b>Screw, Set, securing Differential Bearing Caps (8B-NC.36)</b>	51- 2	4	
C.728	<b>Washer, Shakeproof, on Setscrews (8LW-115)</b>	51- 3	4	
3930	<b>Cover, for Carrier (4HA-010)</b>	51- 4	1	
3823	<b>Plug, for Filler and Drain Apertures (HA-059)</b>	51- 5	2	
3931	<b>Gasket, for Cover (4HA-026)</b>	51- 6	1	
CS.131/5D	<b>Screw, Set, securing Cover to Carrier (5B-NC.10)</b>	51- 7	10	
47	<b>Lockwasher, on Setscrews (5LV-95)</b>	51- 8	10	
7883	<b>Differential Assembly (4HA-082/8)</b>		1	<b>FITTED WITH FOUR FRICTION PLATES.</b>
7501	<b>Differential Assembly (4HA-082/10)</b>		1	<b>FITTED WITH SIX FRICTION PLATES.</b>
3845	<b>Roller Bearing on Differential Case (Timken 24780-24721) (2HA-024)</b>	51- 9	2	
3935	<b>Shim, adjusting Differential (.003" thick) (4HA-046)</b>	51-10	As req'd	} <b>USE SHIM OF DESIRED THICKNESS.</b>
3936	<b>Shim, adjusting Differential (.005" thick) (4HA-047)</b>	51-10	As req'd	
3937	<b>Shim, adjusting Differential (.010" thick) (4HA-048)</b>	51-10	As req'd	
3938	<b>Shim, adjusting Differential (.030" thick) (4HA-049)</b>	51-10	As req'd	
6305	<b>Crown Wheel and Pinion (Ratio 3.54 : 1) (4HA-105/9A)</b>	51-11	1	
6301	<b>Screw, Set, securing Crown Wheel to Differential Case (3HA-075/6)</b>	51-12	10	
7383	<b>Lock Strap, securing Crown Wheel Setscrews (4HA-074/3)</b>	51-13	5	} <b>FOR USE WHEN FOUR FRICTION PLATES ARE FITTED. FOR USE WHEN SIX FRICTION PLATES ARE FITTED.</b>
7384	<b>Lock Strap, securing Crown Wheel Setscrews (4HA-074/4)</b>	51-13	5	
3844	<b>Roller Bearing, at inner end of Pinion (Timken 31593-31520) (2HA-023)</b>	51-14	1	
3860	<b>Shim, inner, adjusting Pinion (.003" thick) (2HA-043)</b>	51-15	As req'd	} <b>USE SHIM OF DESIRED THICKNESS.</b>
3861	<b>Shim, inner, adjusting Pinion (.005" thick) (2HA-044)</b>	51-15	As req'd	
3862	<b>Shim, inner, adjusting Pinion (.010" thick) (2HA-045)</b>	51-15	As req'd	
8029	<b>Distance Washer, behind outer Pinion Shims (4HA-115)</b>	51-16	1	
3856	<b>Shim, outer, adjusting Pinion (.003" thick) (2HA-039)</b>	51-17	As req'd	} <b>USE SHIM OF DESIRED THICKNESS.</b>
3857	<b>Shim, outer, adjusting Pinion (.005" thick) (2HA-040)</b>	51-17	As req'd	
3858	<b>Shim, outer, adjusting Pinion (.010" thick) (2HA-041)</b>	51-17	As req'd	
3859	<b>Shim, outer, adjusting Pinion (.030" thick) (2HA-042)</b>	51-17	As req'd	
3843	<b>Roller Bearing, at outer end of Pinion (Timken 02872-02820) (2HA-022)</b>	51-18	1	
3934	<b>Oil Slinger, on Pinion (4HA-036)</b>	51-19	1	
3840	<b>Oil Seal on Pinion (2HA-019)</b>	51-20	1	
3841	<b>Gasket, for Pinion Oil Seal (2HA-020)</b>	51-21	1	
3879	<b>Companion Flange Assembly (2HA-083)</b>	51-22	1	
115	<b>Nut, securing Companion Flange to Pinion (12LN-NF.9)</b>	51-23	1	
114	<b>Washer under Nut (12W-24)</b>	51-24	1	
3924	<b>Shaft (4 1/2"-005/18)</b>	51-25	2	
C.970/1	<b>Grease Nipple, on Axle Tubes (Tec NA.6673)</b>	51-26	2	

# STANDARD OR AUTOMATIC TRANSMISSION

## REAR AXLE

### WITH THORNTON "POWR-LOK" DIFFERENTIAL

Part No.	Description	Plate No.	No. per Unit	Remarks
C.13718	<b>REAR AXLE, COMPLETE (RATIO 3.31 : 1)</b>		1	<b>ALTERNATIVE TO C.13717.</b>
6304	<b>Crown Wheel and Pinion (4HA-105/8A)</b>	51-11	1	
	<b>For all other items please refer to Rear Axle C.13717</b>			
C.13719	<b>REAR AXLE, COMPLETE (RATIO 4.27 : 1)</b>		1	<b>ALTERNATIVE TO C.13717.</b>
6309	<b>Crown Wheel and Pinion (4HA-105/12A)</b>	51-11	1	
7884	<b>Differential Assembly (4HA-082/9)</b>		1	<b>FITTED WITH FOUR FRICTION PLATES.</b>
7380	<b>Differential Assembly (4HA-082/11)</b>		1	<b>FITTED WITH SIX FRICTION PLATES.</b>
	<b>For all other items please refer to Rear Axle C.13717</b>			
7501	<b>DIFFERENTIAL ASSEMBLY COMPLETE (4HA-082/10)</b>		1	<b>FOR USE WITH 3.54:1 OR 3.31:1 CROWN WHEEL AND PINION WHEN FOUR FLAT AND TWO DISHED FRICTION PLATES ARE FITTED.</b>
7887	<b>Case only, for Differential (4HA-006/9)</b>	51-27	2 halves	
7683	<b>Friction Plate (flat), for Differential Clutch (4HA-111/3)</b>	51-28	4	
8397	<b>Friction Plate (dished), for Differential Clutch (4HA-111/4)</b>	51-29	2	
7684	<b>Friction Disc, for Differential Clutch (4HA-112)</b>	51-30	4	
7682	<b>Ring, for Side Gears (4HA-109/1)</b>	51-31	2	
7681	<b>Side Gear, for Differential (4HA-007/1)</b>	51-32	2	
7685	<b>Gear, Differential Pinion Mate (4HA-008)</b>	51-33	4	
7686	<b>Shaft, for Pinion Mate Gears (4HA-012/1)</b>	51-34	2 halves	
7687	<b>Spacer, on Shaft (4HA-033/1)</b>	51-35	2	
7688	<b>Roll Pin, for Spacer (RP.4-10)</b>	51-36	1	
7680	<b>Bolt, securing Differential Case (6B-NC.44)</b>	51-37	10	
7883	<b>DIFFERENTIAL ASSEMBLY, COMPLETE</b>		1	<b>FOR USE WITH 3.54:1 OR 3.31:1 CROWN WHEEL AND PINION WHEN FOUR FLAT FRICTION PLATES ARE FITTED.</b>
7885	<b>Case only, for Differential (4HA-006/6)</b>		2 halves	
7683	<b>Friction Plate, for Differential Clutch (4HA-111)</b>		4	
7889	<b>Shaft, for Pinion Mate Gears (4HA-012)</b>		2 halves	
	<b>For all other items, please refer to Differential Assembly 7501</b>			

# STANDARD OR AUTOMATIC TRANSMISSION

## REAR AXLE

### WITH THORNTON "POWR-LOK" DIFFERENTIAL

Part No.	Description	Plate No.	No. per Unit	Remarks
7884	<b>DIFFERENTIAL ASSEMBLY COMPLETE (4HA-082/9)</b>		1	<b>FOR USE WITH 4.27:1 CROWN WHEEL AND PINION WHEN FOUR FLAT FRICTION PLATES ARE FITTED.</b>
7886	Case only, for Differential (4HA-006/8)		2 halves	
	<b>For all other items, please refer to Differential Assembly 7501</b>			
7380	<b>DIFFERENTIAL ASSEMBLY, COMPLETE (4HA-082/11)</b>		1	<b>FOR USE WITH 4.27:1 CROWN WHEEL AND PINION WHEN FOUR FLAT AND TWO DISHED FRICTION PLATES ARE FITTED.</b>
7888	Case only, for Differential (4HA-006/10)		2 halves	
7683	Friction Plate, for Differential Clutch (4HA-111)		6	
7686	Shaft, for Pinion Mate Gears (4HA-012/1)		2 halves	
	<b>For all other items, please refer to Differential Assembly 7501</b>			
3879	<b>PINION COMPANION FLANGE ASSEMBLY (2HA-083)</b>	51-22	1	
3842	Dust Shield, for Companion Flange (2HA-021)		1	
3924	<b>REAR AXLE SHAFT (4HA-005/18)</b>	51-25	2	
C.7356	Key, locating Hubs on Axle Shafts (2HA-029)	51-38	2	
3848	Oil Seal, in ends of Carrier Tube, for Axle Shafts (2HA-027)	51-39	2	
3846	Roller Bearing, for Hubs (2HA-025)	51-40	2	
131	Slotted Nut, securing Hubs to Axle Shafts (16SN-NF.10)	51-41	2	
133	Washer, under Slotted Nuts (16W-31)	51-42	2	
L.104/14U	Split Pin, retaining Nuts (8SP-14A)	51-43	2	
C.12935	<b>R.H. REAR ADAPTOR PLATE</b>		1	} Fitted from Chassis No. 820001 to 820070 830001 to 832119 827001 to 827539 837001 to 838753 824001 to 825178 834001 to 836743
C.12936	<b>L.H. REAR ADAPTOR PLATE</b>		1	

**STANDARD OR AUTOMATIC TRANSMISSION  
REAR AXLE  
WITH THORNTON "POWR-LOK" DIFFERENTIAL**

Part No.	Description	Plate No.	No. per Unit	Remarks
C.16587	<b>R.H. REAR ADAPTOR PLATE</b>		1	} Fitted to Chassis No. 820071 and subs. 832120 and subs. 827540 and subs. 838754 and subs. 825179 and subs. 836744 and subs.
C.16588	<b>L.H. REAR ADAPTOR PLATE</b>		1	
UFB.137/9R	<b>Bolt, securing Adaptor Plates to Axle Flanges</b>		10	} <b>USE SHIM OF DESIRED THICKNESS.</b>
C.8667/3	<b>Nut, Self Locking, on Bolts</b>		10	
3867	<b>Shim, adjusting Hub Bearing (.003" thick) (2HA-050)</b>	51-44	As req'd	
3868	<b>Shim, adjusting Hub Bearing (.005" thick) (2HA-051)</b>	51-44	As req'd	
3869	<b>Shim, adjusting Hub Bearing (.010" thick) (2HA-052)</b>	51-44	As req'd	
3870	<b>Shim, adjusting Hub Bearing (.030" thick) (2HA-053)</b>	51-44	As req'd	
C.1483	<b>Gasket, behind Oil Seals (2HA-031)</b>	51-45	2	
7955	<b>OIL SEAL ASSEMBLY FOR HUBS (4HA-057/5)</b>	51-46	2	
C.12931	<b>REAR HUB ASSEMBLY</b>		2	} <b>FOR USE WHEN DISC ROAD WHEELS ARE FITTED.</b>
C.13365	<b>Stud, in Hubs, for fixing of Road Wheels</b>		10	
C.12933	<b>R.H. REAR HUB</b>		1	} <b>FOR USE WITH WIRE SPOKE ROAD WHEELS.</b>
C.12934	<b>L.H. REAR HUB</b>		1	
C.1102	<b>R.H. HUB CAP</b>		1	} <b>FOR USE WHEN WIRE SPOKE ROAD WHEELS ARE FITTED. NOT REQUIRED FOR CARS EXPORTED TO GERMANY.</b>
C.1103	<b>L.H. HUB CAP</b>		1	

**STANDARD OR AUTOMATIC TRANSMISSION**

**REAR AXLE**

**WITH THORNTON "POWR-LOK" DIFFERENTIAL**

Part No.	Description	Plate No.	No. per Unit	Remarks
C.14891	R.H. HUB CAP		1	} FOR USE WHEN WIRE SPOKE ROAD WHEELS ARE FITTED ON CARS EXPORTED TO GERMANY.
C.14892	L.H. HUB CAP		1	
C.14927	TOOL FOR REMOVING AND FITTING HUB CAPS		1	
C.7860	CLIP, RETAINING BRAKE PIPES	51-47	2	
UFS.325/8H	Screw, Set, securing Clips to Rear Axle		2	
UFN.125/L	Nut, on Setscrews		2	
C.724	Washer, Shakeproof under Nuts		2	

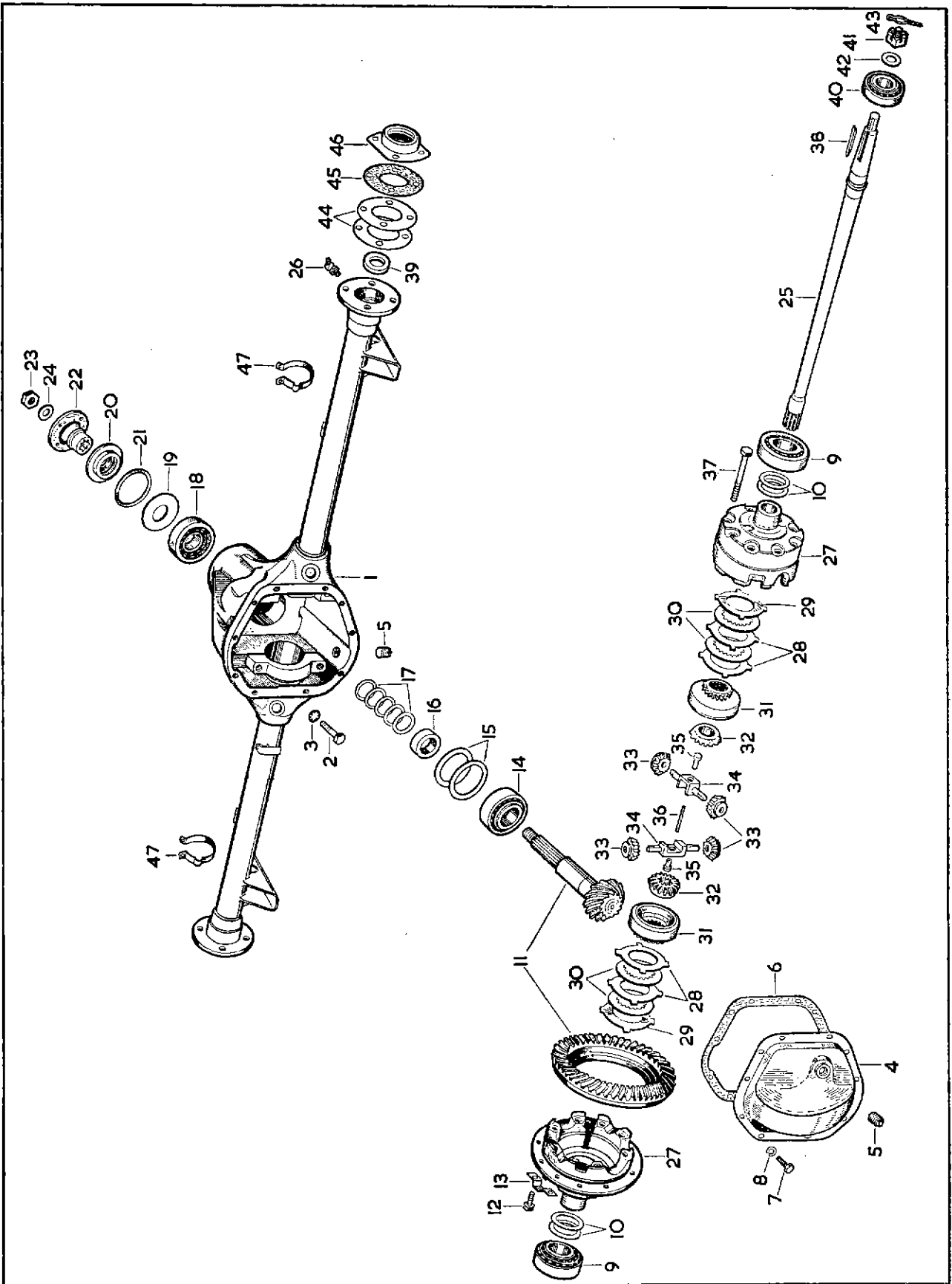


PLATE 51

# OVERDRIVE UNIT REAR AXLE

WITH THORNTON "POWR-LOK" DIFFERENTIAL

Part No.	Description	Plate No.	No. per Unit	Remarks
C.13720	<b>REAR AXLE, COMPLETE (RATIO 4.09 : 1)</b>		1	<b>FITTED AS STANDARD EQUIPMENT ON 3.8 LITRE CARS EXCEPT THOSE FOR U.S.A., CANADA, AND MEXICO. SUPPLIED TO SPECIAL ORDER ONLY, FOR 3.8 LITRE CARS EXPORTED TO U.S.A., CANADA AND MEXICO, AND FOR 3.4 LITRE CARS IRRESPECTIVE OF COUNTRY.</b>
7014	<b>Carrier and Tube Assembly (4HA-101/26)</b>	52- 1	1	
74	<b>Screw, Set, securing Differential Bearing Caps (8B-NC.36)</b>	52- 2	4	
C.728	<b>Washer, Shakeproof, on Setscrews (8LW-115)</b>	52- 3	4	
3930	<b>Cover, for Carrier (4HA-010)</b>	52- 4	1	
3823	<b>Plug, for Filler and Drain Apertures (HA-059)</b>	52- 5	2	
3931	<b>Gasket, for Cover (4HA-026)</b>	52- 6	1	
CS.131/5D	<b>Screw, Set, securing Cover to Carrier (5B-NC.10)</b>	52- 7	10	
47	<b>Lockwasher, on Setscrews (5LW-95)</b>	52- 8	10	
7884	<b>Differential Assembly, complete (4HA-082/9)</b>		1	<b>FITTED WITH FOUR FRICTION PLATES.</b>
7380	<b>Differential Assembly, complete (4HA-082/11)</b>		1	<b>FITTED WITH SIX FRICTION PLATES.</b>
3845	<b>Roller Bearing, on Differential Case (Timken 24780-24721) (2HA-024)</b>	52- 9	2	
3935	<b>Shim, adjusting Differential (.003" thick) (4HA-046)</b>	52-10	As req'd	} <b>USE SHIM OF DESIRED THICKNESS.</b>
3936	<b>Shim, adjusting Differential (.005" thick) (4HA-047)</b>	52-10	As req'd	
3937	<b>Shim, adjusting Differential (.010" thick) (4HA-048)</b>	52-10	As req'd	
3938	<b>Shim, adjusting Differential (.030" thick) (4HA-049)</b>	52-10	As req'd	
6308	<b>Crown Wheel and Pinion (Ratio 4.09 : 1) (4HA-105/13C)</b>	52-11	1	
6301	<b>Screw, Set, securing Crown Wheel to Differential Case (3HA-075/6)</b>	52-12	10	
7383	<b>Lock Strap, securing Crown Wheel Setscrews (4HA-074/3)</b>	52-13	5	<b>FOR USE WHEN FOUR FRICTION PLATES ARE FITTED.</b>
7384	<b>Lock Strap, securing Crown Wheel Setscrews (4HA-074/4)</b>	52-13	5	<b>FOR USE WHEN SIX FRICTION PLATES ARE FITTED.</b>
3844	<b>Roller Bearing, at inner end of Pinion (Timken 31593-31520) (2HA-023)</b>	52-14	1	
3860	<b>Shim, inner, adjusting Pinion (.003" thick) (2HA-043)</b>	52-15	As req'd	} <b>USE SHIM OF DESIRED THICKNESS.</b>
3861	<b>Shim, inner, adjusting Pinion (.005" thick) (2HA-044)</b>	52-15	As req'd	
3862	<b>Shim, inner, adjusting Pinion (.010" thick) (2HA-045)</b>	52-15	As req'd	
8029	<b>Distance Washer, behind outer Pinion Shims (4HA-115)</b>	52-16	1	
3856	<b>Shim, outer, adjusting Pinion (.003" thick) (2HA-039)</b>	52-17	As req'd	} <b>USE SHIM OF DESIRED THICKNESS.</b>
3857	<b>Shim, outer, adjusting Pinion (.005" thick) (2HA-040)</b>	52-17	As req'd	
3858	<b>Shim, outer, adjusting Pinion (.010" thick) (2HA-041)</b>	52-17	As req'd	
3859	<b>Shim, outer, adjusting Pinion (.030" thick) (2HA-042)</b>	52-17	As req'd	
3843	<b>Roller Bearing, at outer end of Pinion (Timken 02872-02820) (2HA-022)</b>	52-18	1	
3934	<b>Oil Slinger on Pinion (4HA-036)</b>	52-19	1	
3840	<b>Oil Seal on Pinion (2HA-019)</b>	52-20	1	
3841	<b>Gasket, for Pinion Oil Seal (2HA-020)</b>	52-21	1	
3879	<b>Companion Flange Assembly (2HA-083)</b>	52-22	1	
115	<b>Nut, securing Companion Flange to Pinion (12LN-NF.9)</b>	52-23	1	
114	<b>Washer, under Nut (12W-24)</b>	52-24	1	
3924	<b>Shaft (4HA-005/18)</b>	52-25	2	
C.970/1	<b>Grease Nipple, on Axle Tubes (Tec NA.6673)</b>	52-26	2	

# OVERDRIVE UNIT REAR AXLE

## WITH THORNTON "POWR-LOK" DIFFERENTIAL

Part No.	Description	Plate No.	No. per Unit	Remarks
7380	<b>DIFFERENTIAL ASSEMBLY, COMPLETE (4HA-082/11)</b>		1	<b>FITTED WITH FOUR FLAT AND TWO DISHED FRICTION PLATES</b>
7888	Case only, for Differential (4HA-006/10)	52-27	2 halves	
7683	Friction Plate (flat), for Differential Clutch (4HA-111/3)	52-28	4	
8397	Friction Plate (dished), for Differential Clutch (4HA-111/4)	52-29	2	
7684	Friction Disc, for Differential Clutch (4HA-112)	52-30	4	
7682	Ring, for Side Gears (4HA-109/1)	52-31	2	
7681	Side Gear, for Differential (4HA-007/1)	52-32	2	
7685	Gear, Differential Pinion Mate (4HA-008)	52-33	4	
7686	Shaft, for Pinion Mate Gears (4HA-012/1)	52-34	2 halves	
7687	Spacer, on Shaft (4HA-033/1)	52-35	2	
7688	Roll Pin, for Spacer (RP.4-10)	52-36	1	
7680	Bolt, securing Differential Case (6B-NC.44)	52-37	10	
7884	<b>DIFFERENTIAL ASSEMBLY, COMPLETE (4HA-082/9)</b>		1	<b>FITTED WITH FOUR FLAT FRICTION PLATES ONLY.</b>
7886	Case only, for Differential (4HA-006/8)		2 halves	
7683	Friction Plate, for Differential Clutch (4HA-111)		4	
7883	Shaft, for Pinion Mate Gears (4HA-012)		2 halves	
For all other items, please refer to Differential Assembly 7380				
3879	<b>PINION COMPANION FLANGE ASSEMBLY (2HA-083)</b>	52-22	1	
3842	Dust Shield, for Companion Flange (2HA-021)		1	
3924	<b>REAR AXLE SHAFT (4HA-005/18)</b>	52-25	2	
C.7356	Key, locating Hubs on Axle Shafts (2HA-029)	52-38	2	
3848	Oil Seal, in ends of Carrier Tube, for Axle Shafts (2HA-027)	52-39	2	
3846	Roller Bearing, for Hubs (2HA-025)	52-40	2	
131	Slotted Nut, securing Hubs to Axle Shafts (16SN-NF.10)	52-41	2	
133	Washer, under Slotted Nuts (16WV-31)	52-42	2	
L.104/14U	Split Pin, retaining Nuts (8SP-14A)	52-43	2	
C.12935	<b>R.H. REAR ADAPTOR PLATE</b>		1	} Fitted from Chassis No. 820001 to 820070 830001 to 832119 827001 to 827539 837001 to 838753 824001 to 825178 834001 to 836743
C.12936	<b>L.H. REAR ADAPTOR PLATE</b>		1	



**OVERDRIVE UNIT**  
**REAR AXLE**  
**WITH THORNTON "POWR-LOK" DIFFERENTIAL**

Part No.	Description	Plate No.	No. per Unit	Remarks
C.16587	<b>R.H. REAR ADAPTOR PLATE</b>		1	} Fitted to Chassis No. 820071 and subs. 832120 and subs. 827540 and subs. 838754 and subs. 825179 and subs. 836744 and subs.
C.16588	<b>L.H. REAR ADAPTOR PLATE</b>		1	
UFB.137/9R	<b>Bolt, securing Adaptor Plates to Axle Flanges</b>		10	} <b>USE SHIM OF DESIRED THICKNESS.</b>
C.8667/3	<b>Nut, Self-Locking, on Bolts</b>		10	
3867	<b>Shim, adjusting Hub Bearing (.003" thick) (2HA-050)</b>	52-44	As req'd	
3868	<b>Shim, adjusting Hub Bearing (.005" thick) (2HA-051)</b>	52-44	As req'd	
3869	<b>Shim, adjusting Hub Bearing (.010" thick) (2HA-052)</b>	52-44	As req'd	
3870	<b>Shim, adjusting Hub Bearing (.030" thick) (2HA-053)</b>	52-44	As req'd	
C.1483	<b>Gasket, behind Oil Seals (2HA-031)</b>	52-45	2	
7955	<b>OIL SEAL ASSEMBLY FOR HUBS (4HA-057/5)</b>	52-46	2	
C.12931	<b>REAR HUB ASSEMBLY</b>		2	} <b>FOR USE WHEN DISC ROAD WHEELS ARE FITTED.</b>
C.13365	<b>Stud, in Hubs, for fixing of Road Wheels</b>		10	
C.12933	<b>R.H. REAR HUB</b>		1	} <b>FOR USE WITH WIRE SPOKE ROAD WHEELS.</b>
C.12934	<b>L.H. REAR HUB</b>		1	
C.1102	<b>R.H. HUB CAP</b>		1	} <b>FOR USE WHEN WIRE SPOKE ROAD WHEELS ARE FITTED. NOT REQUIRED FOR CARS EXPORTED TO GERMANY.</b>
C.1103	<b>L.H. HUB CAP</b>		1	

**OVERDRIVE UNIT**  
**REAR AXLE**  
**WITH THORNTON "POWR-LOK" DIFFERENTIAL**

Part No.	Description	Plate No.	No. per Unit	Remarks
C.14891	R.H. HUB CAP		1	} FOR USE WHEN WIRE SPOKE ROAD WHEELS ARE FITTED ON CARS EXPORTED TO GERMANY.
C.14892	L.H. HUB CAP		1	
C.14927	TOOL FOR REMOVING AND FITTING HUB CAPS		1	
C.7860	CLIP, RETAINING BRAKE PIPES	52-47	2	
UFS.325/8H	Screw, Set, securing Clips to Rear Axle		2	
UFN.125/L	Nut, on Setscrews		2	
C.724	Washer, Shakeproof, under Nuts		2	

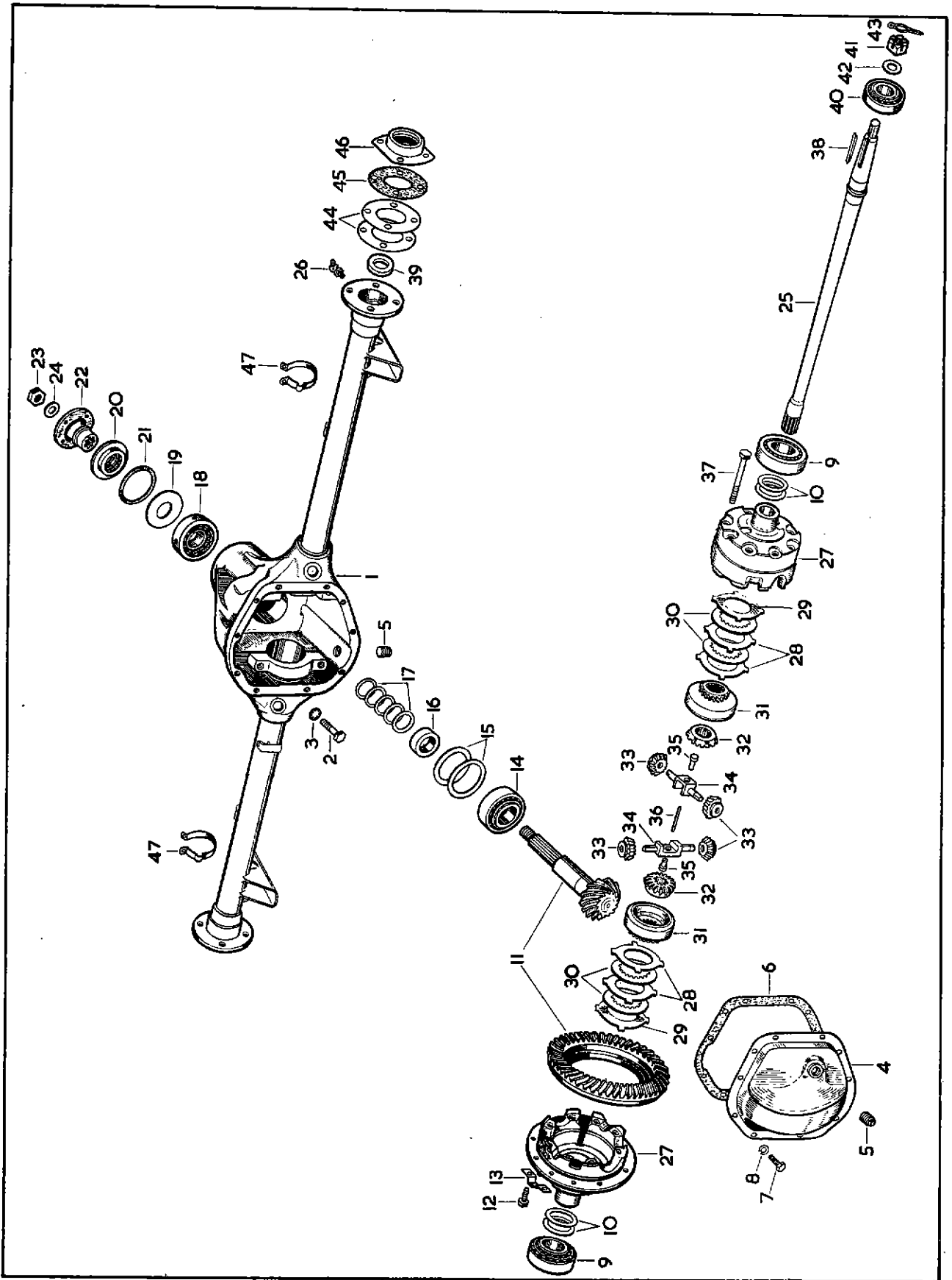


PLATE 52