

STEERING UNIT

Part No.	Description	Plate No.	No. per Unit	Remarks
C.8469	RACK AND PINION ASSEMBLY, COMPLETE	66- 1	1	R.H. DRIVE CARS ONLY.
C.8470	RACK AND PINION ASSEMBLY, COMPLETE		1	L.H. DRIVE CARS ONLY.
C.10626	Housing Assembly , for Pinion (Complete with Bushes)	66- 2	1	R.H. DRIVE CARS ONLY.
C.10627	Housing Assembly , for Pinion (Complete with Bushes)		1	L.H. DRIVE CARS ONLY.
C.7652	Tube Assembly , housing Rack	66- 3	1	
NS.131/5D	Screw , Set, securing Tube to Pinion Housing	66- 4	3	
C.725	Washer , Shakeproof, on Setscrews	66- 5	3	
C.7067	Rack only	66- 6	1	
C.7606	Pinion only	66- 7	1	
C.7653	Eccentric Sleeve , in Pinion Housing, for adjustment of Mesh between Pinion and Rack	66- 8	1	
C.7566	Bearing (Torrington B.1816) at each end of Pinion Housing	66- 9	2	
C.7060	Plate , at end of Pinion Housing, locating Bearing and Sleeve	66-10	1	
C.7061	Cover , at end of Housing	66-11	1	
NS.131/6D	Screw , Set, securing End Cover	66-12	4	
C.725	Washer , Shakeproof, on Setscrews	66-13	4	
C.7654	Flange , for adjustment of Eccentric Sleeve	66-14	1	
C.7059	Oil Seal , behind Adjusting Flange	66-15	1	
C.7655	Retainer , Inner, between Oil Seal and Adjusting Flange	66-16	1	
C.7656	Retainer , Outer, behind Oil Seal	66-17	1	
NS.131/6D	Screw , Set, securing Retainers and Adjusting Flange to Pinion Housing	66-18	4	
C.725	Washer , Shakeproof, on Setscrews	66-19	4	
C.3362/1	Grease Nipple , at top of Pinion Housing (Tec. NA. 6674)	66-20	1	
C.14002	Plunger , at top of Pinion Housing, applying Friction to Rack	66-21	1	
C.8477	Shim , under Screwed Support	66-22	As req'd	
C.14001	Screwed Support , for Plunger	66-23	1	
C.14005	Cap , securing Plunger and Spring in Pinion Housing	66-24	1	
C.14003	Shim , under Cap for adjustment of Tension on Plunger	66-25	As req'd	
C.14004	Belleville Washer , on Plunger, below Cap	66-26	6	
C.8321	Tie Rod Assembly , complete	66-27	2	
C.6623	Bellows (Rubber), between Tie Rods and Pinion Housing	66-28	2	
C.2905/2	Clip , securing Bellows to Tie Rods	66-29	2	
C.2905/4	Clip , securing Bellows to Pinion Housing	66-30	2	
C.8053	Tab Washer , locking Ball Joint at ends of Rack	66-31	2	
C.10626	PINION HOUSING ASSEMBLY	66- 2	1	R.H. DRIVE CARS ONLY.
C.10627	PINION HOUSING ASSEMBLY		1	L.H. DRIVE CARS ONLY.
C.10628	Bush , in ends of Pinion Housing	66-32	2	

STEERING UNIT

Part No.	Description	Plate No.	No. per Unit	Remarks
C.7652	TUBE ASSEMBLY, HOUSING RACK	66- 3	1	
C.7103	Bearing , in end of Rack Tube	66-33	1	
C.8321	TIE ROD ASSEMBLY	66-27	2	
C.8322	Ball Joint Assembly , at ends of Rack	66-34	2	
C.8323	Ball Joint Assembly , at outer ends of Tie Rod Tube	66-35	2	
C.3362/1	Grease Nipple , in Outer Ball Joint Assembly (Tec. NA.6674)	66-36	2	
C.3020	Gaiter , protecting Outer Ball Joints	66-37	2	
C.8150/9	Nut , Self-Locking, on Outer Ball Pins	66-38	2	
C.3165	Clamp , retaining Outer Ball Joints in Tie Rod Tube	66-39	2	
NB.131/10D	Bolt , through Clamps	66-40	2	
NN.131/L	Nut , on Bolts	66-41	2	
FG.105/X	Washer , Spring, under Nuts	66-42	2	
FW.105/T	Washer , Plain, under Spring Washers	66-43	2	
C.8322	INNER BALL JOINT ASSEMBLY	66-34	2	
C.7569	Shim , between Ball Cup and Screwed Socket (.004" thick)	66-44	As req'd	
C.11723	Shim , between Ball Cup and Screwed Socket (.010" thick)	66-44	As req'd	
C.8472	Spring , behind Shims	66-45	2	
C.10027	Tab Washer , securing Ball Housing	66-46	2	
C.7799	MOUNTING FOR RACK AND PINION ASSEMBLY	66-47	2	
C.8024	Shim , under Mounting (.048" thick)	66-48	As req'd	
C.8249	Shim , under Mounting (.048" thick)	66-49	As req'd	
NS.231/7D	Screw , Set, securing Mountings to Frame	66-50	8	
NN.231/L	Nut , on Setscrews		8	
C.725	Washer , Shakeproof, under Nuts		8	
C.7834	Screw , Set, securing Pinion Housing to Mounting at front	66-51	2	
C.8021	Bolt , securing Pinion Housing to Mounting at rear	66-52	2	
C.8022	Bridge Piece , on Bolts	66-53	1	
C.8023	Sleeve on Bolts	66-54	2	

} These Setscrews and Bolts must be secured with Locking Wire

STEERING UNIT

Part No.	Description	Plate No.	No. per Unit	Remarks
C.7832	PLATFORM ASSEMBLY FOR SUPPORT OF RACK TUBE	66-55	1	
NS.231/5D	Screw, Set, securing Platform to Mounting	66-56	4	
C.725	Washer, Shakeproof, on Setscrews		4	
NS.137/6D	Screw, Set, securing Rack Tube to Platform	66-57	2	
C.726	Washer, Shakeproof, on Setscrews	66-58	2	
FW.106/T	Washer, Plain, under Shakeproof Washers	66-59	2	

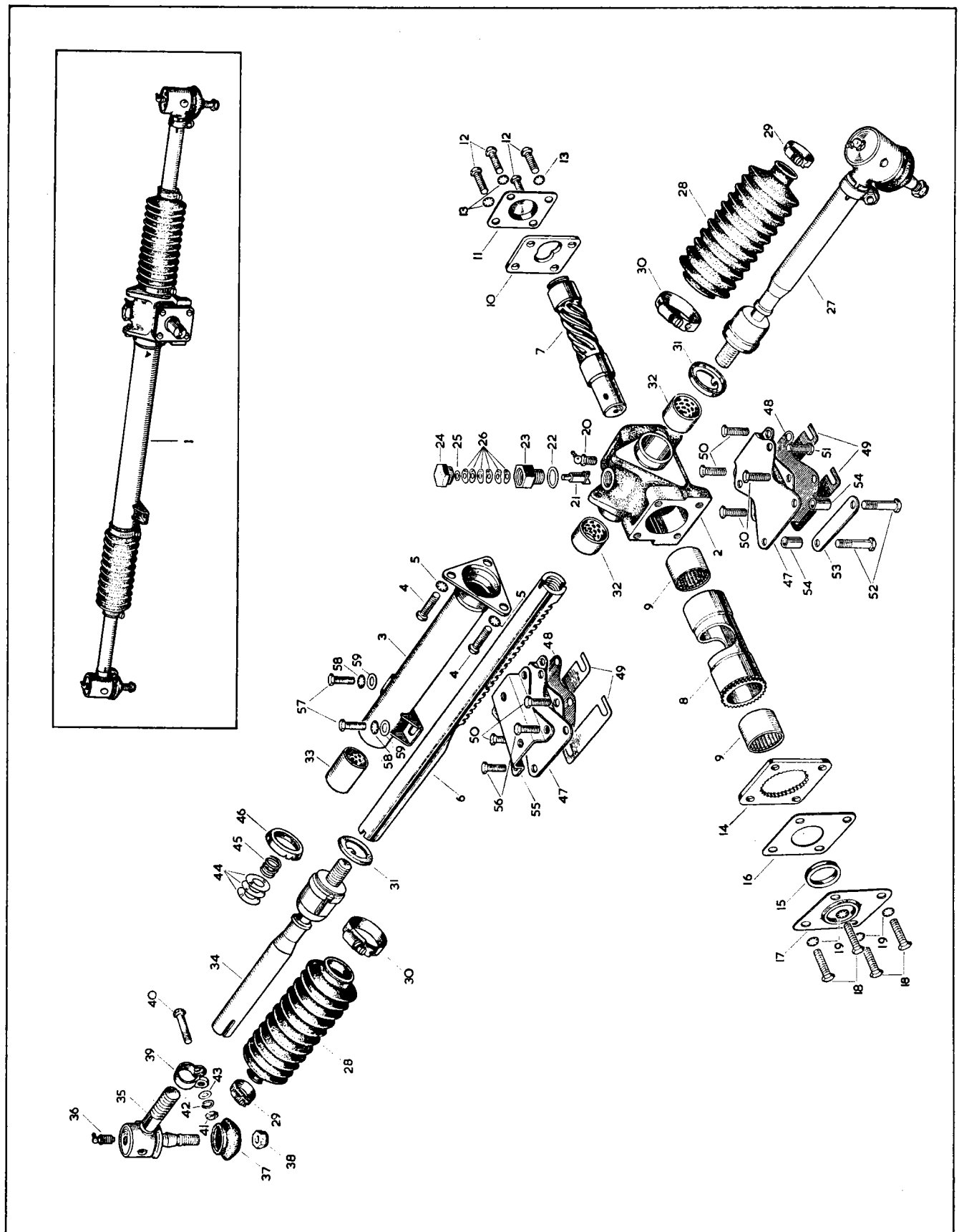


PLATE 66

STEERING COLUMN

Part No.	Description	Plate No.	No. per Unit	Remarks
C.12857	UPPER STEERING COLUMN ASSEMBLY		1	DROP HEAD AND FIXED HEAD COUPES ONLY Fitted from Chassis No. 837001 to 837070 824001 to 824075 834001 to 834599
C.12852	Outer Tube Assembly		1	
C.12851	Inner Column, Female		1	
C.10263	Felt Bearing, Upper		1	
C.10264	Felt Bearing, Lower		1	
C.10790	Washer, retaining Felt Bearings		4	
C.10788	Spring Clip, retaining Washers		2	
C.8084	Inner Column, Male		1	
C.8085	Stop Button, in Male Inner Column		1	
C.10253	Spring Clip, retaining Stop Button		1	
C.10257	Locknut, clamping Male Inner Column on Telescopic Device		1	
C.13666	UPPER STEERING COLUMN ASSEMBLY		1	DROP HEAD AND FIXED HEAD COUPES ONLY Fitted from Chassis No. 827001 to 827068 837071 to 837414 824076 to 824413 834600 to 835547
C.12852	Outer Tube Assembly		1	
C.13641	Inner Column, Female		1	
C.10263	Felt Bearing, Upper		1	
C.10264	Felt Bearing, Lower		1	
C.10790	Washer, retaining Felt Bearings		4	
C.10788	Spring Clip, retaining Washers		2	
C.13642	Inner Column, Male		1	
C.13662	Stop Button, in Inner Column		1	
C.10253	Spring Clip, retaining Stop Button		1	
C.13639	Locknut, clamping Male Inner Column on Telescopic Device		1	
C.13638	Split Collet, inside Locknut		1	
C.14682	UPPER STEERING COLUMN ASSEMBLY		1	
C.14070	Outer Tube Assembly	67- 1	1	Fitted to Chassis No. 820001 and subs. 830001 and subs. 827069 and subs. 837415 and subs. 824414 and subs. 835548 and subs.
C.14674	Inner Column, Female	67- 2	1	
C.10263	Felt Bearing, Upper	67- 3	1	
C.10264	Felt Bearing, Lower	67- 4	1	
C.10790	Washer, retaining Felt Bearings	67- 5	4	
C.10788	Spring Clip, retaining Washers	67- 6	2	
C.13642	Inner Column, Male	67- 7	1	
C.14675	Stop Button, in Inner Column	67- 8	1	
C.10253	Circlip, locking Stop Button	67- 9	1	
C.13858	Locknut, clamping Male Inner Column on Telescopic Device	67-10	1	
C.13638	Split Collet, inside Locknut	67-11	1	

NOTE.—C.14682 incorporates a Female Inner Column which is tapped to receive a screwed type Stop Button.
If either of these items is required individually to service an Upper Steering Column fitted from Chassis No.

830001 to 830649
827069 to 827098
837415 to 837479
824414 to 824467
835548 to 835589

then **BOTH PARTS** should be used as a pair.

The Complete Upper Steering Column C.14682 will be Issued from Jaguar Spares Division to service Steering Columns fitted to the above cars.

STEERING COLUMN

Part No.	Description	Plate No.	No. per Unit	Remarks
C.12823	HORN SLIP RING ASSEMBLY (LUCAS 348479)		1	
C.10317	Slip Ring only (348276)	67-12	1	} Supplied complete only, to Part No. 8295 (54300638)
C.8153	Cable Assembly (861622)	67-13	1	
C.10319	Rotor, bottom half (348275)	67-14	1	
C.10320	Rotor, top half (348274)	67-15	1	
C.8156	Spring, for Cable Tension (348627)	67-16	1	
C.8761	Contact for Cable Assembly (348266)	67-17	1	
C.8157	CONTACT ASSEMBLY FOR HORN SLIP RING (348262)		1	
C.8158	Contact Holder (348269)	67-18	2	
C.8159	Contact (348268)	67-19	1	
C.8161	Bolt, securing Contact to Holders (139444)	67-20	1	
C.8160	Nut, on Bolt (348270)	67-21	1	
C.10650	Sleeve, insulating Contacts (348272)	67-22	1	
C.13024	Insulating Strip (Fibre) protecting Contact from above (348486)	67-23	1	
C.12194	Eyelet, connecting Cable to Horn Push (188818)	67-24	1	
C.11746	EARTH CONTACT FOR OPERATION OF HORN (348313)	67-25	1	
UCS.313/3R	Screw, Set, securing Earth Contact to Bracket on Outer Tube		1	
UCN.113/L	Nut, on Setscrew		1	
C.721	Washer, Shakeproof, under Nut		1	
C.13958	DIRECTION INDICATOR CONTROL ASSEMBLY (31776/A—37SA)	67-26	1	} Fitted to Chassis No. 820001 and subs. 830001 and subs. 827069 and subs. 837415 and subs. 824414 and subs. 835548 and subs.
C.14307	Cover Assembly (comprising Front and Rear Covers)		1	
7521	Fixing Clip (with Screws, etc.) (54330333)		1	
7522	Contact Set (348443)		1	
7523	Spring, centring Pawl (348323)		1	
C.16120	STRIKER FOR RETURN OF DIREC- TION INDICATOR CONTROL TO NEUTRAL POSITION (54332927)	67-27	1	
C.14007/1	Screw, Set, securing Striker		2	
C.723/A	Washer, Shakeproof, on Setscrews		2	
C.3377	Washer, Plain, under Shakeproof Washers		2	

STEERING COLUMN

Part No.	Description	Plate No.	No. per Unit	Remarks
C.7842	STEERING WHEEL (17")	67-28	1	
C.1037	Grub Screw in Hub of Steering Wheel	67-29	4	
C.1024	Dust Cover (Telescopic) between Locknut and bottom of Steering Wheel	67-30	1	
C.3366	Cup (Large) at bottom of Telescopic Dust Cover	67-31	1	
C.8576	Cup (Small) at top of Telescopic Dust Cover	67-32	1	
C.7878	Split Cone on Male Inner Column for seating of Steering Wheel	67-33	2 halves	
C.7879	Nut , securing Steering Wheel to Male Inner Column	67-34	1	
C.9017	Washer , under Nut	67-35	1	
C.11520	Tab Washer , locking Nut	67-36	1	
C.12975	BRACKET ASSEMBLY, MOUNTING STEERING COLUMN TO DASH FRONT	67-37	1	R.H. DRIVE CARS ONLY.
C.12979	BRACKET ASSEMBLY, MOUNTING STEERING COLUMN TO DASH FRONT		1	L.H. DRIVE CARS ONLY.
C.12982	RUBBER SEAL BETWEEN MOUNTING BRACKET AND DASH FRONT	67-38	1	R.H. DRIVE CARS ONLY.
C.12983	RUBBER SEAL BETWEEN MOUNTING BRACKET AND DASH FRONT		1	L.H. DRIVE CARS ONLY.
C.11957	End Cap at lower end of Steering Column Outer Tube	67-39	1	
C.12858	Rubber Washer , under End Cap	67-40	1	
NS.125/5D	Screw , Set, securing Mounting Bracket to Dash		4	
FW.104/T	Washer , Plain, on Setscrews		4	
NN.125/L	Nut , on Setscrews		4	
C.724	Washer , Shakeproof, under Nuts		4	
NS.131/5D	Screw , Set, clamping Mounting Bracket		1	
NN.131/L	Nut , on Setscrew		1	
C.725	Washer , Shakeproof, under Nut		1	
NB.131/15D	Bolt , securing Steering Column to Dash, upper		1	
FW.105/T	Washer , Plain, on Bolt		2	
C.12974	Distance Tube , on Bolt		1	
NN.131/L	Nut , on Bolt		1	
C.725	Washer , Shakeproof, under Nut		1	

STEERING COLUMN

Part No.	Description	Plate No.	No. per Unit	Remarks
C.12985	LOWER STEERING COLUMN ASSEMBLY	67-41	1	
8379	End Yoke for Universal Joint (KO.5/4/GB.343)		1	
5426	Journal Assembly , for Universal Joint		1	
C.10836/1	COUPLING FOR LOWER STEERING COLUMN	67-42	1	
C.10837	UPPER JAW FOR LOWER STEERING COLUMN	67-43	1	
C.10838	Cap Screw , securing Coupling to Lower Steering Column and Upper Jaw	67-44	4	
C.11820/3	Lockwasher (Palnut) on Cap Screws	67-45	4	
UFB.131/13R	Bolt , securing Upper Jaw to Upper Steering Column	67-46	1	
UFN.131/L	Nut , on Bolt	67-47	1	
C.725	Washer , Shakeproof, under Nut	67-48	1	
C.6330	Taper Pin , securing Lower Jaw to Pinion Shaft	67-49	1	
NN.125/L	Nut , on Taper Pin	67-50	1	
C.724	Washer , Shakeproof, under Nut	67-51	1	

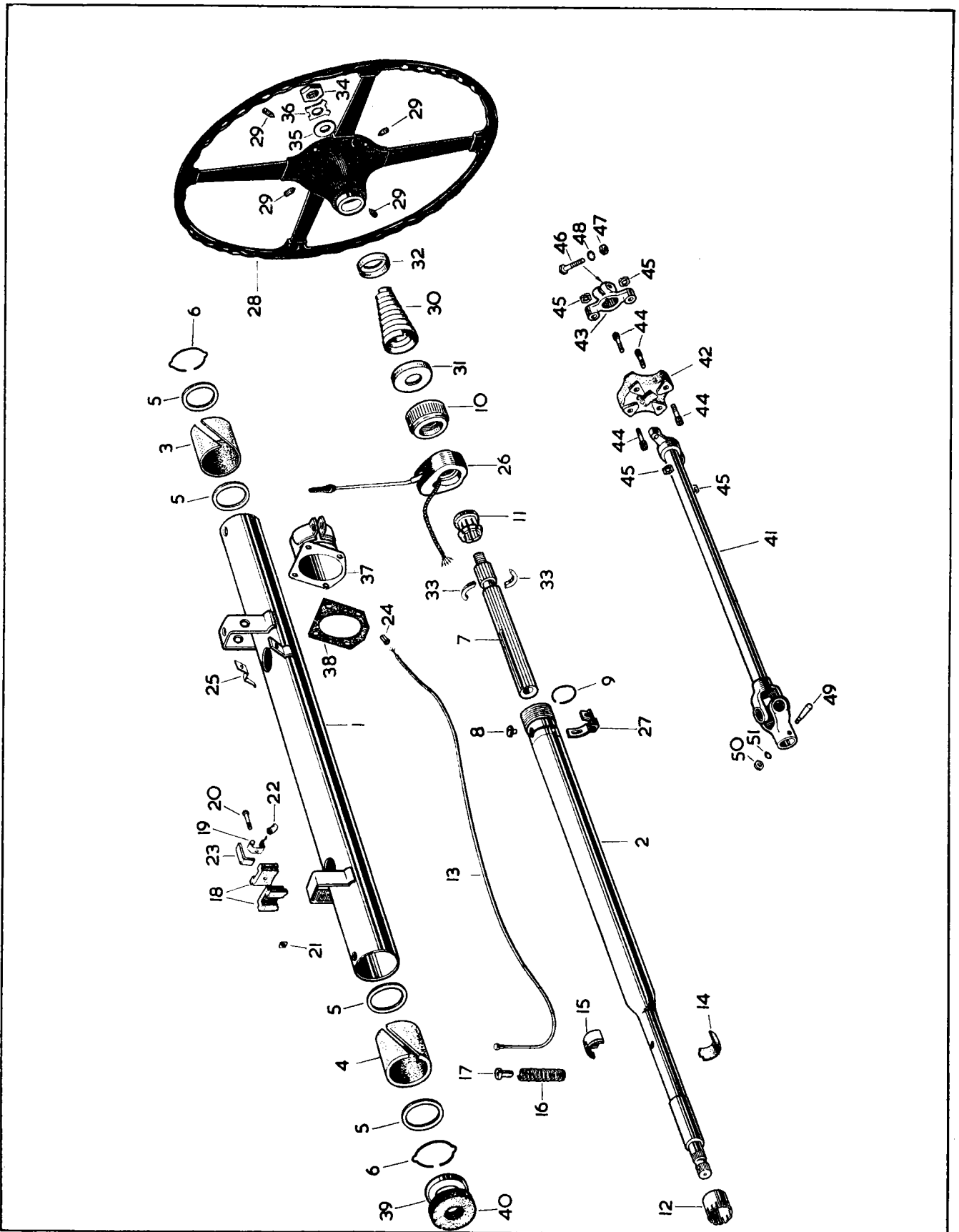


PLATE 67