

# CYLINDER BLOCK

Part No.	Description	Plate No.	No. per Unit	Remarks
C.15951	<b>CYLINDER BLOCK</b>	1- 1	1	<b>FOR 3.4 LITRE ENGINE</b>
C.15867	Plug for Oil Filter Flange		1	
C.317	Core Plug (Welch Washer) at right hand side of Cylinder Block		1	
C.315	Core Plug (Welch Washer) at each side and at rear of Cylinder Block	1- 2	7	
C.5022	Plug (1" Briggs) on left hand side of Cylinder Block, sealing aperture for heater element	1- 3	1	
C.2352	Plug ( $\frac{1}{2}$ " A.N.F.) at right hand side of Cylinder Block, sealing oil gallery apertures	1- 4	6	
C.2296/3	Washer (Copper) on Plugs	1- 5	6	
C.8614	Front Timing Cover	1- 6	1	
C.16020	<b>CYLINDER BLOCK</b>		1	<b>FOR 3.8 LITRE ENGINE</b>
C.16862	Expansion Plug		1	
UFS.131/3R	Screw, Set, for Water Jet hole		4	
FWV.105/E	Copper Washer, on Setscrews		4	
	<b>Items listed for Cylinder Block C.15951 also apply to C.16020</b>			
C.2305	Plug ( $\frac{7}{8}$ " A.N.F.) in front end of oil gallery	1- 7	1	
C.2157	Headed Plug ( $\frac{3}{8}$ " A.N.F.) in rear end of oil gallery	1- 8	1	
C.2296/2	Washer (Copper) on Plug	1- 9	1	
C.11530	Screwed Plug at rear of Cylinder Block		1	
C.11531	Washer (Copper) for Screwed Plug		1	
C.13479	Dowel for location of Timing Cover on front of Cylinder Block and between Bearing Caps and Cylinder Block	1-10	16	
C.13478	Dowel for location of Clutch Housing on rear face of Cylinder Block	1-11	2	
C.2269	Stud (Plain) for fixing of Cylinder Head to Block	1-12	13	
C.2270	Stud (Dowel) for fixing of Cylinder Head to Block	1-13	1	
C.14400	Cover Assembly on rear face of Cylinder Block		1	Fitted from Engine No. V.1001 to V.7459 VS.1001 to VS.2182 VA.1001 to VA.1398 VAS.1001 to VAS.1084
C.16317	Cover Assembly on rear face of Cylinder Block	1-14	1	Fitted to Engine No. V.7460 and subs. VS.2183 and subs. VA.1399 and subs. VAS.1085 and subs.
C.2373	Ring Dowel, between Rear Cover and Cylinder Block	1-15	2	
NB.131/7D	Bolt, Centre, securing Rear Cover to Cylinder Block	1-16	1	
NB.131/8.5D	Bolt, Outer, securing Rear Cover to Cylinder Block	1-17	2	
FG.105/X	Spring Washer on Bolts	1-18	3	
C.2394	Ring Dowel, between Sealing Ring and Rear Cover		2	
C.2470	Cap Screw, securing Sealing Ring to Rear Cover		2	
C.5846	Union, connecting oil feed pipe to Cylinder Block	1-19	1	
C.4146	Washer (Copper) at each side of union	1-20	2	
C.2430	Sealing Ring, in Distributor aperture on Cylinder Block	1-21	1	
NS.125/4D	Screw, Set, securing Distributor in Cylinder Block		1	
C.724	Washer, Shakeproof, on Setscrew		1	
FWV.104/T	Washer, Plain, on Setscrew		1	
NS.119/2D	Plug, in aperture for Distributor drive lubrication		1	
AW.102/E	Washer (Copper) on Plug		1	
C.2262	Bolt, securing Bearing Caps		14	
C.2425	Washer, locking bolts on centre, intermediate and rear Bearing Caps		11	
C.2427	Washer, locking bolts on front Bearing Cap		2	

# CYLINDER BLOCK

Part No.	Description	Plate No.	No. per Unit	Remarks
C.2461	<b>LINER FOR 3.4 LITRE CYLINDER BLOCK</b>		6	<b>FOR USE WHEN RECONDITIONING CYLINDER BLOCK</b>
C.13791	<b>LINER FOR 3.8 LITRE CYLINDER BLOCK</b>		6	<b>FOR USE WHEN RECONDITIONING CYLINDER BLOCK</b>
C.13457	<b>FILTER GAUZE, IN CYLINDER BLOCK, BEHIND HYDRAULIC CHAIN TENSIONER</b>	1-22	1	
C.2354	<b>WATER DRAIN TAP FOR LEFT-HAND SIDE OF CYLINDER BLOCK</b>	1-23	1	
C.2296/3	Washer (Copper) on Drain Tap	1-24	1	
C.316	Washer (Fibre) on Drain Tap	1-25	2	
C.8619	<b>DYNAMO MOUNTING BRACKET</b>	1-26	1	
NS.137/6D	Screw, Set, securing Mounting Bracket to Cylinder Block		3	
FG.106/X	Washer, Spring, on Setscrews		3	
NB.131/8D	Bolt, securing Dynamo to Mounting Bracket		2	
C.8737/2	Nut on Bolts		2	
C.4808	<b>CRANKSHAFT</b>	1-27	1	
C.4283	Screwed Plug, in Crankshaft Journals	1-28	6	
C.2226	Bush, in rear end of Crankshaft, for Gearbox Primary Shaft	1-29	1	
C.2316	Thrust Washer, for centre Bearing Cap (.091"/.093")	1-30	2	Over-size Thrust Washers to be used for service replacements if required.
C.2316/1	Thrust Washer, for centre Bearing Cap (.095"/.097")	1-30	2	
C.2315	Main Bearing, on front, centre and rear journals of Crankshaft (standard size)	1-31	6 halves	} <b>NOT REQUIRED FOR XK 150 'S' MODELS</b>
C.2317	Main Bearing, on intermediate journals of Crankshaft (standard size)	1-32	8 halves	
C.16293	Main Bearing, on front, centre and rear journals of Crankshaft (standard size)	1-31	6 halves	} <b>FOR USE ON XK 150 'S' MODELS</b>
C.16294	Main Bearing, on intermediate journals of Crankshaft (standard size)	1-32	8 halves	

Main Bearings are obtainable in the following undersizes :—  
 —.010" —.020" —.030" —.040"

When ordering, please quote Part No. and under-size required (e.g. C.2315/20 for .020" undersize)

# CYLINDER BLOCK

Part No.	Description	Plate No.	No. per Unit	Remarks
C.8241	<b>CRANKSHAFT DAMPER ASSEMBLY</b>	1-33	1	<b>FOR 3.4 LITRE ENGINE</b>
C.15274	<b>CRANKSHAFT DAMPER ASSEMBLY</b>	1-33	1	<b>FOR 3.8 LITRE ENGINE</b>
C.2466	Cone, for centre of hub	1-34	1	
C.2173	Distance piece, on Crankshaft, behind Damper	1-35	1	
C.2283	Oil Thrower, behind Distance Piece	1-36	1	
C.2170	Gear, for Timing Chain	1-37	1	
C.2314	Gear, for Oil Pump Drive	1-38	1	
C.757	Key, locking Cone to Damper Hub and Crankshaft, and Gears for Timing Chain and Oil Pump to Crankshaft	1-39	4	
C.7275	<b>PULLEY, ON CRANKSHAFT, FOR FAN BELT</b>		1	Fitted from Engine No. V.1001 to V.5732 VS.1001 to VS.1522
C.14589	<b>PULLEY, ON CRANKSHAFT, FOR FAN BELT</b>	1-40	1	Fitted to Engine No. V.5733 and subs. VS.1523 and subs. <b>AND ALL 3.8 LITRE ENGINES</b>
NB.131/11F	Bolt, securing Pulley to Damper Hub	1-41	4	
C.725	Washer, Shakeproof, on Bolts	1-42	2	
C.5896	Bolt, securing Damper to Crankshaft	1-43	1	
C.2468	Washer, behind Bolt	1-44	1	
C.2467	Tab Washer, locking Bolt	1-45	1	
C.7917	<b>CONNECTING ROD (LESS BEARINGS)</b>	1-46	6	
C.2439	Bearing, Small End		6	
C.3944	Bolt, securing Caps to Connecting Rod		12	
C.2361	Nut, on Bolts		12	
L.103.5/8U	Split Pin, locking Nuts		12	
C.1132	Bearing, Big End (Standard Size)	1-47	12 halves	Fitted from Engine No. V.1001 to V.7639 VA.1001 to VA.2053 VAS.1001 to VAS.1283
C.16295	Bearing, Big End (Standard Size)	1-47	12 halves	Fitted to Engine No. V.7640 and subs. VS.1001 and subs. VA.2054 and subs. VAS.1284 and subs.
<b>BIG END BEARINGS</b> are obtainable in the following undersizes :—				
— .010"    — .020"    — .030"    — .040"				
When ordering, please quote Part No. and under-size required (e.g. C.1132/20 for .020" undersize)				

# CYLINDER BLOCK

Part No.	Description	Plate No.	No. per Unit	Remarks
C.4809	<b>FLYWHEEL</b>	1-48	1	
C.2313	<b>Dowel</b> , in centre of Flywheel	1-49	2	
C.7182	<b>Dowel</b> , on outer face of Flywheel	1-50	2	
C.4855	<b>Screw, Set</b> , securing Flywheel to Crankshaft	1-51	10	
C.4810	<b>Plate</b> , locking Setscrews	1-52	1	
C.12091	<b>PISTON, COMPLETE</b>		6	<b>FOR 7:1 COMPRESSION RATIO 3.4 LITRE ENGINES FITTED TO XK 150 MODELS.</b>
C.12098	<b>PISTON, COMPLETE</b>	1-53	6	<b>FOR 8:1 COMPRESSION RATIO 3.4 LITRE ENGINES FITTED TO XK 150 OR XK 150 'S' MODELS.</b>
C.11954	<b>Pressure Ring</b> , upper (chromium plated)	1-54	6	
C.11955	<b>Pressure Ring</b> , lower	1-55	6	
C.5832	<b>Scraper Ring</b>	1-56	6	
C.3104	<b>Gudgeon Pin</b> , retaining Piston to Connecting Rods	1-57	6	
C.3964	<b>Circlip</b> , securing Gudgeon Pins in Pistons	1-58	12	
C.16339	<b>PISTON, COMPLETE</b>		6	<b>FOR 9:1 COMPRESSION RATIO 3.4 LITRE ENGINES FITTED TO XK 150 'S' MODELS.</b>
C.13796	<b>Pressure Ring</b> , Upper (chromium plated)		6	
C.13797	<b>Pressure Ring</b> , Lower		6	
C.13798	<b>Scraper Ring</b>		6	
C.13827	<b>Gudgeon Pin</b>		6	
C.3964	<b>Circlip</b> , securing Gudgeon Pins		12	
	<b>PISTONS AND RINGS</b> are obtainable in the following oversizes :—			
	+ .010"	+ .020"	+ .030"	
	When ordering, please state Part No. and over-size required (e.g. C.12098/20 for .020" over-size)			
C.11956	<b>Scraper Ring</b> (Maxilite)		6	<b>May be used as SERVICE REPLACEMENT for Scraper Ring C.5832 if desired.</b>

# CYLINDER BLOCK

Part No.	Description	Plate No.	No. per Unit	Remarks
C.14826	<b>PISTON, COMPLETE</b>		6	<b>FOR 7:1 COMPRESSION RATIO 3.8 LITRE ENGINES FITTED TO XK 150 MODELS.</b>
C.14806/1	<b>PISTON, COMPLETE</b>		6	<b>FOR 8:1 COMPRESSION RATIO 3.8 LITRE ENGINES FITTED TO XK 150 OR XK 150 'S' MODELS.</b>
C.13794/1	<b>PISTON, COMPLETE</b>		6	<b>FOR 9:1 COMPRESSION RATIO 3.8 LITRE ENGINES FITTED TO XK 150 OR XK 150 'S' MODELS.</b>
C.13796	Pressure Ring, Upper (chromium plated)		6	
C.13797	Pressure Ring, Lower		6	
C.13798	Scraper Ring (Maxigroove)		6	
C.13827	Gudgeon Pin, retaining Piston on Connecting Rods		6	
C.3964	Circlip, securing Gudgeon Pins in Pistons		12	
<p><b>PISTONS AND RINGS</b> are obtainable in the following oversizes :—</p> <p style="margin-left: 20px;">+.010"      +.020"      +.030"</p> <p>When ordering, please state Part No. and oversize required (e.g. C.14806/1/20 for .020" oversize)</p>				
C.12938	<b>STEEL OIL SUMP ASSEMBLY</b>	I-59	1	
C.16319	Gasket, between Oil Sump and Cylinder Block	I-60	2 halves	
C.8593	Seal, at front end of Oil Sump	I-61	1	
C.2302/S	Seal (Cork Rubber) at rear end of Oil Sump	I-62	1	Fitted from Engine No. V.1001 to V.7459 VS.1001 to VS.2182 VA.1001 to VA.1398 VAS.1001 to VAS.1084
C.16315	Seal (Cork Rubber) at rear end of Oil Sump	I-62	1	Fitted to Engine No. V.7460 and subs. VS.2183 and subs. VA.1399 and subs. VAS.1085 and subs.
C.2364	Drain Plug, for Oil Sump	I-63	1	
C.2296/1	Washer (Copper) on Oil Sump Drain Plug	I-64	1	
C.14170	Screw, Set, securing Oil Sump to Cylinder Block		1	
NS.131/6D	Screw, Set, securing Oil Sump to Cylinder Block		25	
FG.105/X	Washer (Spring) on Setscrews		26	
C.12940	<b>FILTER BASKET ASSEMBLY, INSIDE OIL SUMP</b>	I-65	1	
NS.125/4D	Screw, Set, securing Filter Basket to Oil Sump		6	
C.724	Washer, Shakeproof, on Setscrews		6	

# CYLINDER BLOCK

Part No.	Description	Plate No.	No. per Unit	Remarks
C.12382	<b>HOSE, FROM OIL SUMP TO OIL CLEANER</b>	1-66	1	
C.2905/2	<b>Clip, securing Hose</b>	1-67	2	
C.13277	<b>DIPSTICK ASSEMBLY FOR OIL SUMP</b>		1	Fitted from Engine No. V.1001 to V.5059 VS.1001 to VS.1303
C.8781	<b>DIPSTICK ASSEMBLY FOR OIL SUMP</b>	1-68	1	Fitted to Engine No. V.5060 and subs. VS.1304 and subs. VA.1001 and subs. VAS.1001 and subs.
C.8068	<b>FLEXIBLE OIL PIPE FROM TOP OF OIL CLEANER TO COPPER PIPE</b>	1-69	1	
1425	<b>COPPER OIL PIPE BETWEEN FLEXIBLE PIPE FROM OIL CLEANER TO PRESSURE GAUGE</b>	1-70	1	
C.8240	<b>IGNITION TIMING POINTER ON OIL SUMP</b>	1-71	1	
NS.125/3D	<b>Screw, Set, securing Timing Pointer to front of Oil Sump</b>		2	
NN.125/L	<b>Nut, on Setscrews</b>		2	
C.724	<b>Washer, Shakeproof, under Nuts</b>		2	

# CYLINDER BLOCK

Part No.	Description	Plate No.	No. per Unit	Remarks
C.8783	<b>BRACKET ASSEMBLY FOR LEFT-HAND FRONT ENGINE MOUNTING</b>	1-72	1	
C.8784	<b>BRACKET ASSEMBLY FOR RIGHT-HAND FRONT ENGINE MOUNTING</b>	1-73	1	
NS.143/6D	<b>Screw, Set, securing Engine Mounting Brackets to Cylinder Block</b>		6	
C.727	<b>Washer, Shakeproof, on Setscrews</b>			
C.4794	<b>FRONT ENGINE MOUNTING (RUBBER)</b>	1-74	2	
NS.150/7D	<b>Screw, Set, securing Engine to Rubber Mounting</b>		2	
FW.108/T	<b>Washer, Plain, on Setscrews</b>		2	
FG.108/X	<b>Washer, Spring, on Setscrews</b>		2	
NB.131/7D	<b>Bolt, securing Rubber Mountings to Flange Support Brackets</b>		4	
FG.105/X	<b>Washer, Spring, on Bolts</b>		4	
NN.131/L	<b>Nut, on Bolts</b>		4	
C.12948	<b>BRACKET FOR R.H. REAR ENGINE MOUNTING</b>	1-75	1	
C.12949	<b>BRACKET FOR L.H. REAR ENGINE MOUNTING</b>	1-76	1	
UFB.137/26D	<b>Bolt, securing Rear Engine Mounting Brackets to Cylinder Block</b>		6	
NN.137/L	<b>Nut, on Bolts</b>		6	
FG.106/X	<b>Washer, Spring, under Nuts</b>		6	
NB.131/6D	<b>Bolt, securing Rear Engine Mounting Brackets to Cylinder Block</b>		4	
FW.105/T	<b>Washer, Plain, on Bolts</b>		4	
NN.131/L	<b>Nut, on Bolts</b>		4	
C.725	<b>Washer, Shakeproof, under Nuts</b>		4	
C.4794	<b>REAR ENGINE MOUNTING (RUBBER)</b>	1-77	2	
C.4302	<b>Packing Plate under Rear Engine Mountings</b>	1-78	2	
NB.131/7D	<b>Bolt, securing Rear Engine Mountings to Bracket on Chassis Frame</b>		4	
FW.105/T	<b>Washer, Plain, on Bolts</b>		4	
NN.131/L	<b>Nut, on Bolts</b>		4	
C.725	<b>Washer, Shakeproof, under Nuts</b>		4	
NS.150/7D	<b>Screw, Set, securing Engine to Rubber Mountings</b>		2	
FW.108/T	<b>Washer, Plain, on Setscrews</b>		2	
FG.108/X	<b>Washer, Spring, on Setscrews</b>		2	

# CYLINDER BLOCK

Part No.	Description	Plate No.	No. per Unit	Remarks
7495	<b>GASKETS PACKAGE FOR COMPLETE ENGINE OVERHAUL (SD.1060)</b>		1	<b>XK 150 WITH 3.4 LITRE ENGINE &amp; CABLE OPERATED REV. COUNTER.</b>
8364	<b>GASKETS PACKAGE FOR COMPLETE ENGINE OVERHAUL (SD.1095)</b>		1	<b>XK 150 WITH 3.4 LITRE ENGINE AND ELECTRIC REV. COUNTER.</b>
8373	<b>GASKETS PACKAGE FOR COMPLETE ENGINE OVERHAUL (SD.1101)</b>		1	<b>XK 150 WITH 3.8 LITRE ENGINE AND ELECTRIC REV. COUNTER.</b>
8366	<b>GASKETS PACKAGE FOR COMPLETE ENGINE OVERHAUL (SD.1097)</b>		1	<b>XK 150 'S' WITH 3.4 LITRE ENGINE AND EITHER CABLE OPERATED OR ELECTRIC REV. COUNTER.</b>
8375	<b>GASKETS PACKAGE FOR COMPLETE ENGINE OVERHAUL (SD.1103)</b>		1	<b>XK 150 'S' WITH 3.8 LITRE ENGINE AND EITHER CABLE OPERATED OR ELECTRIC REV. COUNTER.</b>



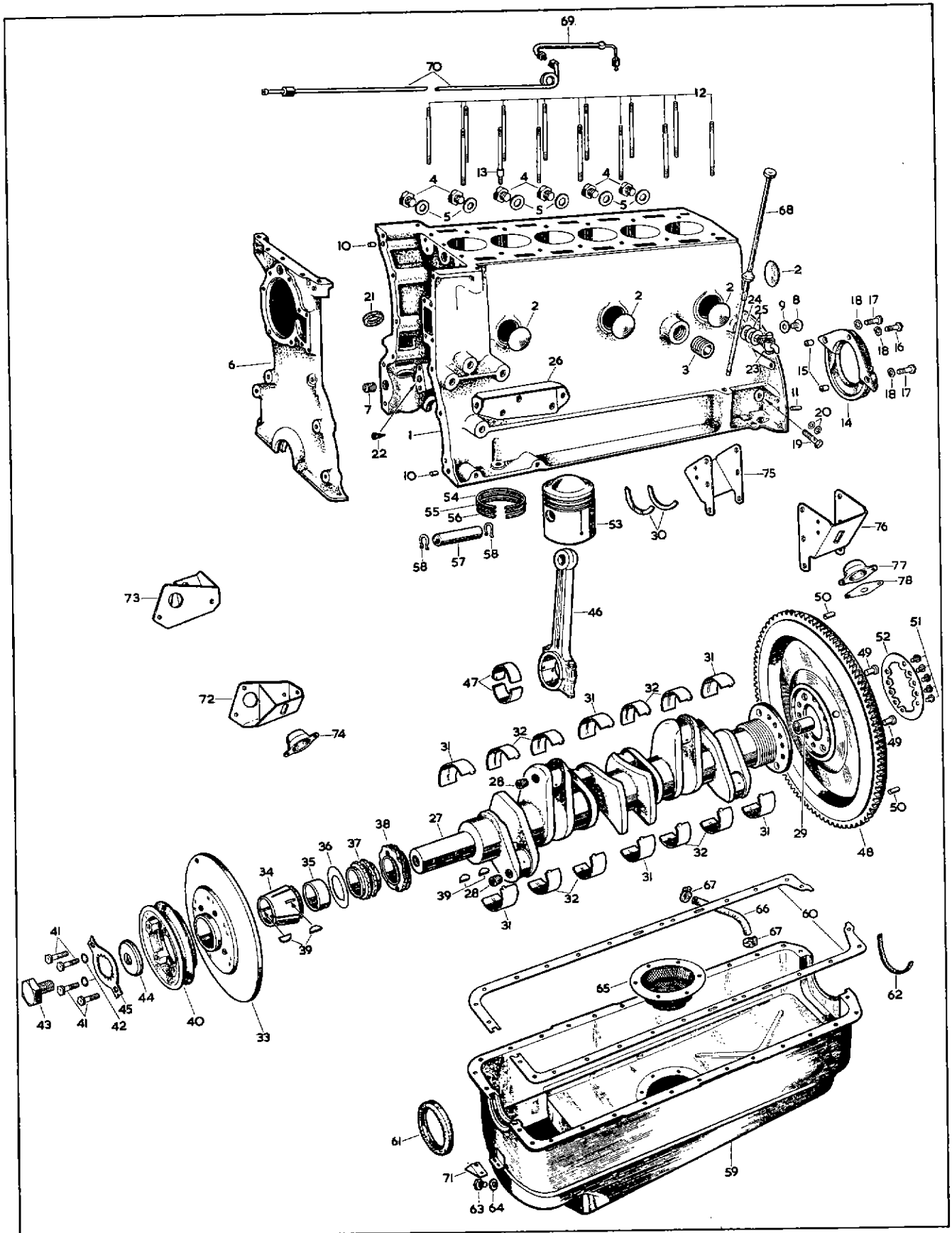


PLATE 1

# OIL PUMP

Part No.	Description	Plate No.	No. per Unit	Remarks
C.8612/1	<b>OIL PUMP COMPLETE (H.E.1359)</b>		1	
C.8823	<b>Body only (H.E.1360)</b>	2- 1	1	<b>SUPPLIED ONLY AS A COMPLETE ASSEMBLY.</b>
C.9794	<b>Rotor Assembly (H.E.1493) (comprising Inner Rotor, Outer Rotor, Driving Shaft and Locking Pin)</b>	2- 2	1	
C.8824	<b>Cover, at bottom of Pump</b>	2- 3	1	
UCS.131/8R	<b>Screw, Set, securing Cover</b>	2- 4	2	
UCS.131/14R	<b>Screw, Set, securing Cover</b>	2- 5	2	
FG.105/X	<b>Washer, Spring, on Setscrews</b>	2- 6	4	
C.8649	<b>'O' Ring, in Oil Pump Body and Cover</b>	2- 7	2	
C.8646	<b>Drive Shaft, between Distributor and Coupling Shaft</b>	2- 8	1	
C.8647	<b>Bush, on Drive Shaft</b>	2- 9	1	
C.2393	<b>Washer, on Drive Shaft (at bottom of Bush)</b>	2-10	1	
C.2152	<b>Helical Gear, driving Oil Pump and Distributor</b>	2-11	1	
C.753	<b>Key, locking Helical Gear on Drive Shaft</b>	2-12	1	
NN.256/L	<b>Nut, at bottom of Drive Shaft</b>	2-13	1	
C.2151	<b>Special Washer, locking Nut</b>	2-14	1	
C.8648	<b>Shaft, coupling Driving Gear in Pump and Drive Shaft for Distributor</b>	2-15	1	
C.9294	<b>Dowel Bolt, securing Oil Pump to Bearing Cap</b>	2-16	3	
C.7263	<b>Tab Washer, on Bolts</b>	2-17	3	
C.8608	<b>OIL DELIVERY PIPE FROM PUMP TO CYLINDER BLOCK</b>	2-18	1	
C.2220	<b>Gasket, between Flange of Delivery Pipe and Cylinder Block</b>	2-19	1	
NB.131/6D	<b>Bolt, securing Delivery Pipe to Cylinder Block</b>		2	
C.7263	<b>Tab Washer, locking Bolts</b>		2	
C.12939	<b>OIL SUCTION PIPE FROM OIL SUMP TO PUMP</b>	2-20	1	
C.6824	<b>Clip, securing Suction Pipe to Struts</b>		2	Fitted from Engine No. V.1001 to V.7258 VS.1001 to VS.2118 VA.1001 to VA.1006
C.15271	<b>Clip, securing Suction Pipe to Struts</b>	2-21	2	Fitted to Engine No. V.7259 and subs. VS.2119 and subs. VA.1007 and subs. VAS.1001 and subs.
C.8665	<b>Strut, on Pump, supporting Suction Pipe</b>	2-22	1	Fitted from Engine No. V.1001 to V.7258 VS.1001 to VS.2118 VA.1001 to VA.1006
C.8779	<b>Strut, on Bearing Cap, supporting Suction Pipe</b>		1	
C.15272	<b>Strut, on Bearing Cap, supporting Suction Pipe</b>	2-23	1	Fitted to Engine No. V.7259 and subs. VS.2119 and subs. VA.1007 and subs. VAS.1001 and subs.
NS.125/5D	<b>Screw, Set, securing Clips to Struts</b>		2	
FW.104/T	<b>Washer, Plain, on Setscrews</b>		2	
C.3968/1	<b>Nut, Self Locking, on Setscrews</b>		2	
C.6829	<b>Plate, sealing bottom of Suction Pipe</b>	2-24	1	
C.6828	<b>Spring, compressing Plate</b>	2-25	1	
L.103/10U	<b>Split Pin, retaining Plate and Spring on Suction Pipe</b>	2-26	1	

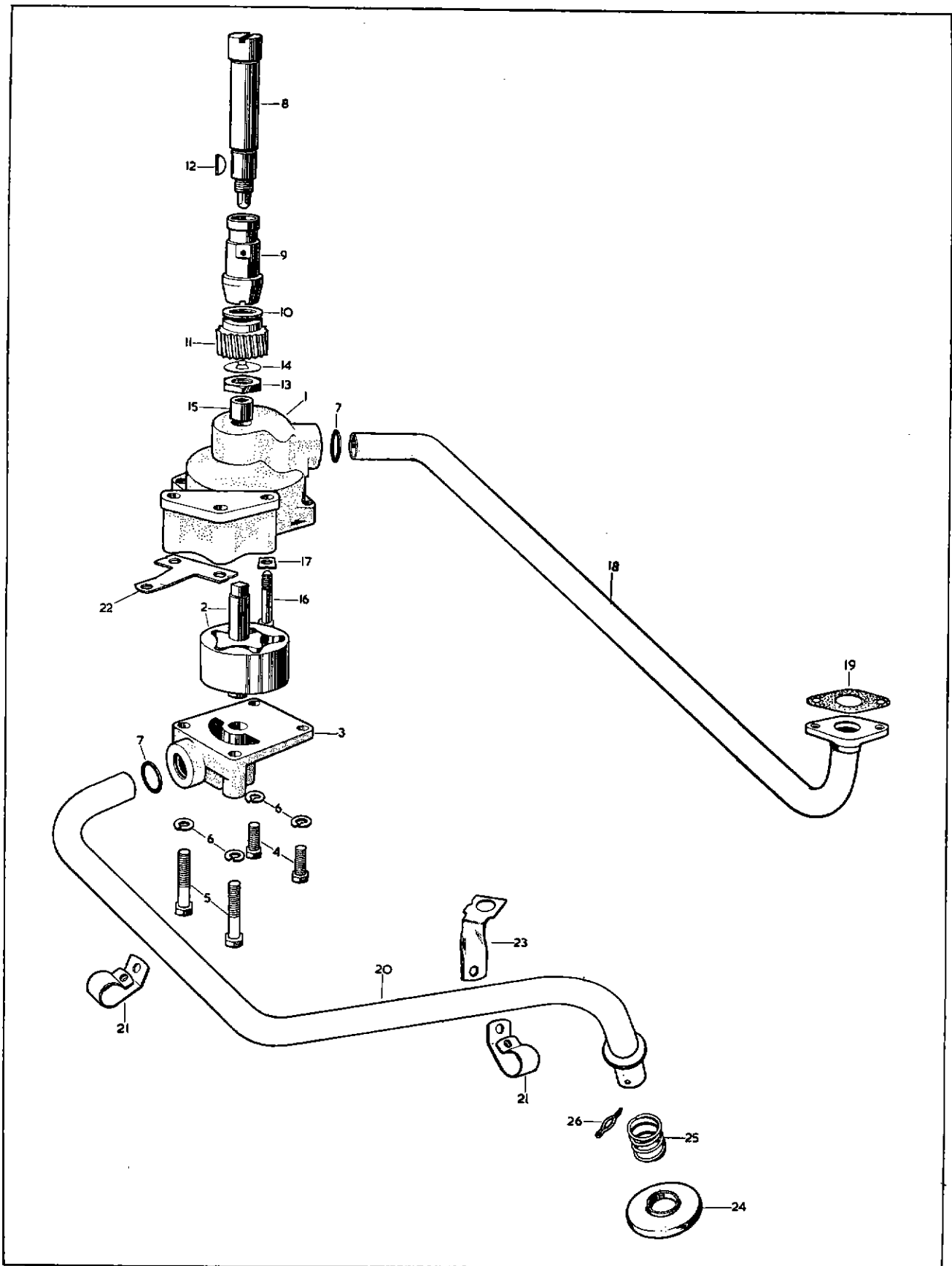


PLATE 2

# OIL CLEANER

Part No.	Description	Plate No.	No. per Unit	Remarks
C.12776/1	<b>OIL CLEANER, COMPLETE (FA.2741/101)</b>	3- 1	1	
6884	<b>Canister Assembly (62009)</b>	3- 2	1	
6159	<b>Spring</b> at bottom of Canister (160441)	3- 3	1	
6160	<b>Washer</b> , Plain, at top of Spring (174660)	3- 4	1	
6161	<b>Washer</b> (Felt) under Pressure Plate (141251)	3- 5	1	
6886	<b>Pressure Plate</b> at bottom of Canister (134477)	3- 6	1	
6885	<b>Bolt</b> through Canister (46285)	3- 7	1	
6158	<b>Washer</b> (Rubber) under head of Bolt (137367)	3- 8	1	
6163	<b>Spring Clip</b> on Bolt (174966)	3- 9	1	
1526	<b>Element</b> (FG.2306)	3-10	1	
7985	<b>Filter Head Assembly</b> (41071)	3-11	1	
6882	<b>Outlet Adaptor</b> for attachment of Hose to Oil Sump (103868)	3-12	1	
6881	<b>Sealing Washer</b> on Outlet Adaptor (174742)	3-13	1	
6147	<b>Clamping Plate</b> on Filter Head (134282)	3-14	1	
6148	<b>Anchor Insert</b> , holding Clamping Plate to Filter Head (103118)	3-15	1	
6883	<b>Sealing Ring</b> between Filter Head and Canister (137493)	3-16	1	
7986	<b>Plug</b> in Filter Head (102017)	3-17	1	
5843	<b>Washer</b> (Copper) for Plug (4323)	3-18	1	
2698	<b>Union Screw</b> , at top of Filter Head, for connection of Flexible Hose (102256)	3-19	1	
5843	<b>Washer</b> (Copper) for Union Screw (4323)	3-20	1	
7310	<b>Relief Valve</b> (118250)	3-21	1	
7315	<b>Spring</b> , for Relief Valve (160567)	3-22	1	
6154	<b>Dome Nut</b> , retaining Relief Valve Spring (103125)	3-23	1	
7357	<b>Stop Pin</b> , in Dome Nut, restricting Relief Valve travel (SK.103565)	3-24	1	
6880	<b>Washer</b> , under Dome Nut (140181)	3-25	1	
6150	<b>Drain Plug</b> at bottom of Filter Head (103181)	3-26	1	
6149	<b>Sealing Washer</b> for Drain Plug (150382)	3-27	1	
C.13091	<b>Gasket</b> , between Cylinder Block and Oil Cleaner	3-28	1	
UFB.131/13R	<b>Bolt</b> securing Oil Cleaner to Cylinder Block		1	
UFB.131/14R	<b>Bolt</b> securing Oil Cleaner to Cylinder Block		1	
UFB.131/25R	<b>Bolt</b> securing Oil Cleaner to Cylinder Block		1	
UFB.131/35R	<b>Bolt</b> securing Oil Cleaner to Cylinder Block		1	
FW.105/E	<b>Washer</b> (Copper) on Bolts (adjacent to Cylinder Block)		4	
FW.105/T	<b>Washer</b> (Steel) under head of Bolts		4	
C.12382	<b>HOSE BETWEEN OIL CLEANER AND OIL SUMP</b>	3-29	1	
C.2905/2	<b>Clip</b> securing Hose to Cleaner and Sump	3-30	2	

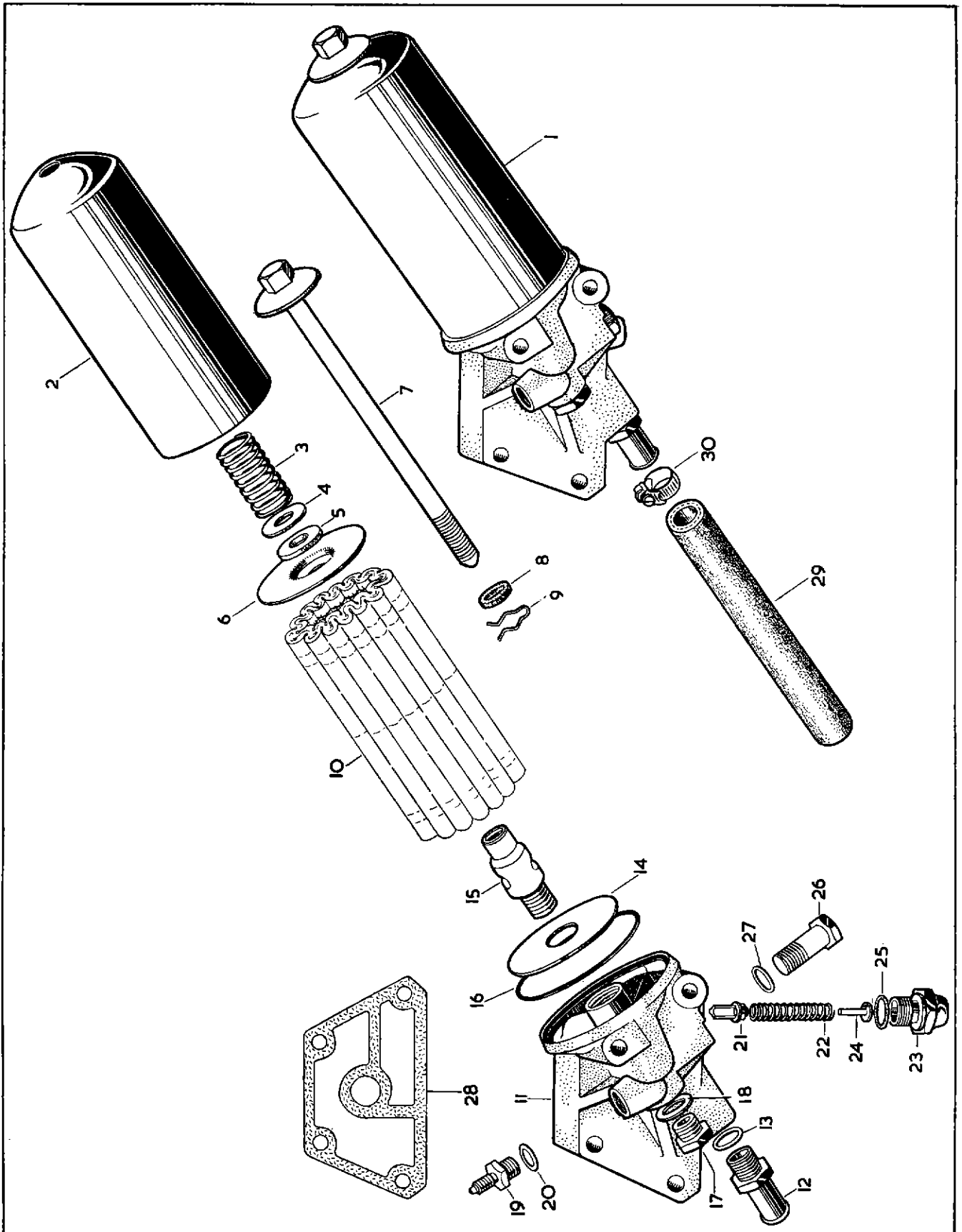


PLATE 3

# WATER PUMP

Part No.	Description	Plate No.	No. per Unit	Remarks
<b>C.7618</b>	<b>WATER PUMP, COMPLETE</b>		1	
C.7452/1	Body only	4-1	1	
C.8167	Spindle, complete with Bearing	4-2	1	
C.8011	Screw (Allen head) retaining Bearing in Pump Body	4-3	1	
NN.225/L	Nut, locking Screw	4-4	1	
C.8256	Thrower, on long end of spindle, adjacent to Bearing	4-5	1	
C.6773	Seal, on long end of spindle, adjacent to Thrower	4-6	1	
C.7675	Impeller	4-7	1	
C.7645/1	Carrier, for Pulley, on short end of spindle	4-8	1	
C.7631	Elbow, on Water Pump, for Heater Hose connection	4-9	1	
C.7733	Gasket, between Elbow and Pump	4-10	1	
NB.125/9D	Screw, Set, securing Elbow to Pump	4-11	2	
C.724	Washer, Shakeproof, on Setscrews	4-12	2	
C.2303	Gasket, between Water Pump and Cylinder Block	4-13	1	
<b>C.12391</b>	<b>FAN FOR WATER PUMP</b>	4-14	1	
C.5121	Balance Piece for Fan	4-15	As req'd	
C.7644	<b>PULLEY FOR FAN</b>		1	Fitted from Engine No. V.1001 to V.5732 VS.1001 to VS.1522
C.14588	<b>PULLEY FOR FAN</b>	4-16	1	Fitted to Engine No. V.5733 and subs. VS.1523 and subs. VA.1001 and subs. VAS.1001 and subs.
NS.131/7D	Screw, Set, securing Pulley and Fan to Carrier	4-17	4	
C.740	Washer, Shakeproof, on Setscrews	4-18	4	
C.7898	<b>BELT, DRIVING FAN</b>		1	Fitted from Engine No. V.1001 to V.1597
C.13595/1	<b>BELT, DRIVING FAN</b>		1	Fitted from Engine No. V.1598 to V.5732 VS.1001 to VS.1522
C.14535/1	<b>BELT, DRIVING FAN</b>	4-19	1	Fitted to Engine No. V.5733 and subs. VS.1523 and subs. VA.1001 and subs. VAS.1001 and subs.

# WATER PUMP

Part No.	Description	Plate No.	No. per Unit	Remarks
C.7548	<b>BY-PASS WATER HOSE</b>	4-20	1	
C.2905/4	<b>Clip, securing By-Pass Hose</b>	4-21	2	
<b>THE ITEMS LISTED BELOW ARE THE HEATER CONNECTIONS FROM THE WATER PUMP TO THE HEATER UNIT.</b>				
C.11730	<b>HOSE, BETWEEN ELBOW ON WATER PUMP AND FRONT RETURN PIPE</b>	4-22	1	
C.2905/2	<b>Clip, securing Hose to Elbow</b>	4-23	1	
C.2905/1	<b>Clip, securing Hose to Front Return Pipe</b>	4-24	1	
C.13232	<b>FRONT RETURN PIPE ALONG SIDE OF CYLINDER BLOCK</b>	4-25	1	
C.4837	<b>Clip, securing Front Return Pipe to Cylinder Block</b>	4-26	2	
UFS.119/4R	<b>Screw, Set, securing clips to Front Return Pipe</b>		2	
UFN.119/L	<b>Nut, on Setscrews</b>		2	
C.723/A	<b>Washer, Shakeproof, under Nuts</b>		2	
C.8888	<b>HOSE, BETWEEN FRONT RETURN PIPE AND HEATER UNIT</b>	4-27	1	
C.2905/1	<b>Clip, securing Hose to Return Pipe and Heater Unit</b>		2	
C.17421	<b>ADAPTOR, IN INLET MANIFOLD, FOR WATER FEED TO HEATER UNIT</b>	4-28	1	
C.2296/1	<b>Washer (Copper) on Adaptor</b>	4-29	1	

# WATER PUMP

Part No.	Description	Plate No.	No. per Unit	Remarks
C.4397	<b>HOSE, BETWEEN ADAPTOR AND WATER VALVE</b>	4-30	1	<b>FOR XK 150 MODELS ONLY.</b>
C.11730	<b>HOSE, BETWEEN ADAPTOR AND WATER VALVE</b>		1	<b>FOR XK 150 'S' MODELS ONLY.</b>
C.2905/2	Clip, securing Hose to Adaptor and Water Valve		2	
C.4392	<b>VALVE CONTROLLING WATER SUPPLY TO HEATER</b>	4-31	1	
C.4393	Knob, for operation of Water Valve	4-32	1	
C.5233/1	Screw, Set, securing Knob	4-33	1	
C.12945	<b>BRACKET MOUNTING CONTROL VALVE</b>	4-34	1	<b>FOR XK 150 MODELS ONLY.</b>
C.14130	<b>BRACKET MOUNTING CONTROL VALVE</b>		1	<b>FOR XK 150 'S' MODELS ONLY.</b>
C.12947	Screw, Set, securing Bracket to Barrel Nuts on Water Pipe		2	
C.725	Washer, Shakeproof, on Setscrews		2	
C.12941	<b>HOSE BETWEEN WATER VALVE AND HEATER UNIT</b>	4-35	1	
C.2905/1	Clip, securing Hose to Water Valve and Heater Unit		2	



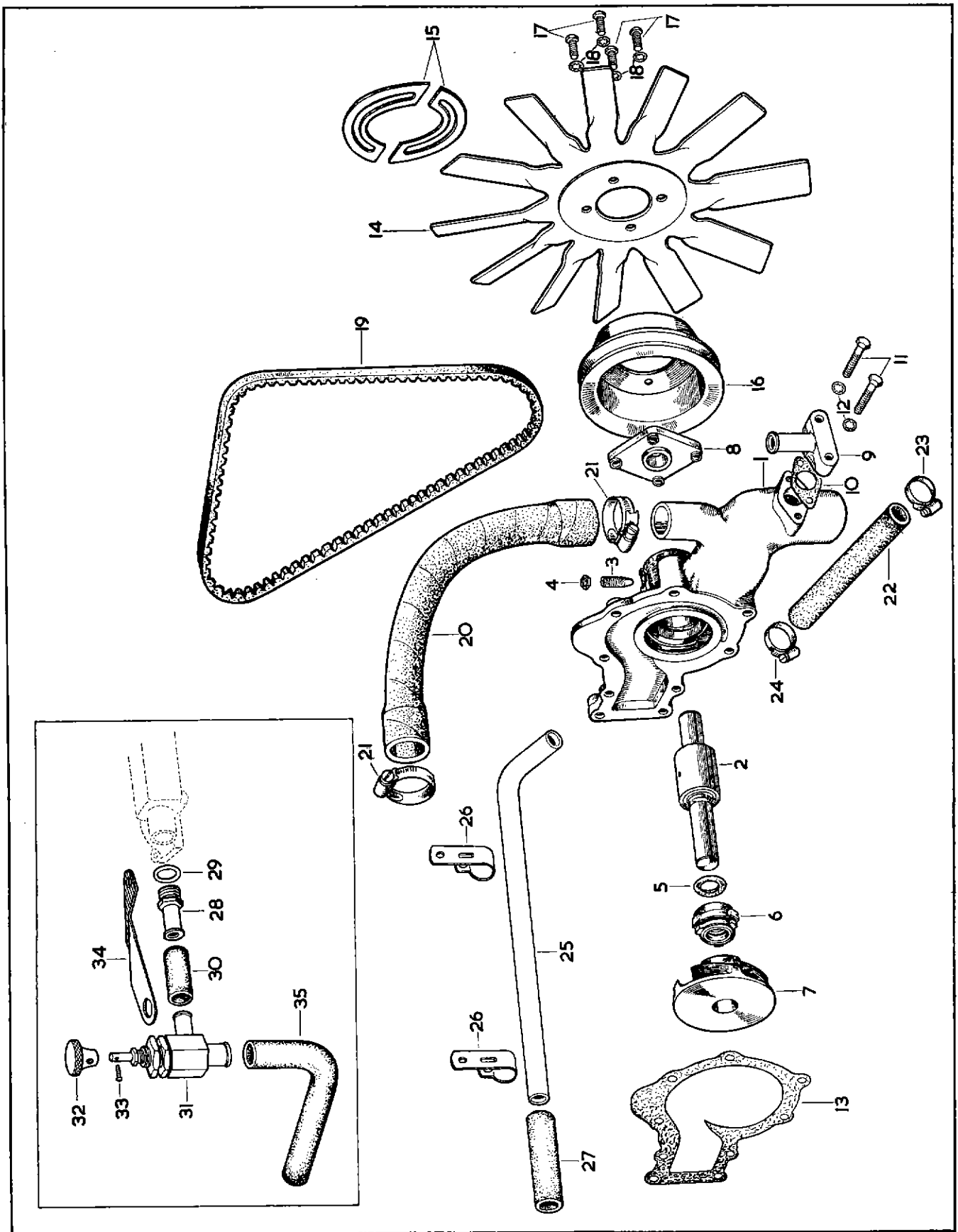


PLATE 4

# CYLINDER HEAD

## FOR XK 150 MODELS ONLY

Part No.	Description	Plate No.	No. per Unit	Remarks
7671	<b>CYLINDER HEAD ASSEMBLY, COMPLETE (SD.1065)</b> (Comprising Cylinder Head, Valves, Valve Inserts, Guides, Springs, Tappets, Tappet Guides, Adjusting Pads, Camshafts, Camshaft Covers, Filler Cap, Rev. Counter Gearbox, Breather Cover, etc.)		1	<b>FOR XK 150 3.4 LITRE ENGINES</b> Fitted from Chassis No. 820001 to 820042 830001 to 832087 824001 to 824904 834001 to 836232 827001 to 827372 837001 to 838271
8376	<b>CYLINDER HEAD ASSEMBLY, COMPLETE (SD.1104)</b> (Comprising Cylinder Head, Valves, Valve Inserts, Guides, Springs, Tappets, Tappet Guides, Adjusting Pads, Camshafts, Camshaft Covers, Filler Cap, Rev. Counter Generator, Breather Cover, etc.)		1	<b>FOR XK 150 3.4 LITRE ENGINES</b> Fitted to Chassis No. 820043 and subs. 832088 and subs. 824905 and subs. 836233 and subs. 827373 and subs. 838272 and subs.
8100	<b>CYLINDER HEAD ASSEMBLY, COMPLETE (SD.1085)</b> (Comprising Cylinder Head, Valves, Valve Inserts, Guides, Springs, Tappets, Tappet Guides, Adjusting Pads, Camshafts, Camshaft Covers, Filler Cap, Rev. Counter Generator, Breather Cover, etc.)		1	<b>FOR XK 150 3.8 LITRE ENGINES</b> Fitted to Chassis No. 820043 and subs. 832088 and subs. 824905 and subs. 836233 and subs. 827373 and subs. 838272 and subs.
C.12500	<b>CYLINDER HEAD</b>		1	Fitted from Chassis No. 820001 to 820042 830001 to 832087 824001 to 824904 834001 to 836232 827001 to 827372 837001 to 838271
C.2326	<b>Stud, in Cylinder Head, for fixing of Camshaft Bearing Caps and Covers</b>		16	
C.2373	<b>Ring-Dowel on Studs</b>		16	
C.2323	<b>'D' Washer on Studs</b>		16	
NN.131/L	<b>Nut, securing Bearing Caps</b>		16	
FG.105/X	<b>Washer, Spring, under Nuts</b>		16	
C.2157	<b>Core Plug, (Headed) on top of Cylinder Head</b>		3	
C.2296/2	<b>Washer (Copper) under Headed Core Plug</b>		3	
C.15509	<b>Guide for Inlet Valve</b>		6	
C.15506	<b>Guide for Exhaust Valve</b>		6	
C.12507	<b>Insert for Inlet Valve</b>		6	
C.9865	<b>Insert for Exhaust Valve</b>		6	
C.7262	<b>Guide for Tappets</b>		12	

# CYLINDER HEAD

## FOR XK 150 MODELS ONLY

Part No.	Description	Plate No.	No. per Unit	Remarks
C.14956	<b>CYLINDER HEAD</b>	5- 1	1	<b>FOR XK 150 3.4 LITRE ENGINES</b> Fitted to Chassis No. 820043 and subs. 832098 and subs. 824905 and subs. 836233 and subs. 827373 and subs. 838272 and subs.
C.2326	<b>Stud, in Cylinder Head, for fixing of Camshaft Bearing Caps and Covers</b>	5- 2	16	
C.2373	<b>Ring-Dowel on Studs</b>	5- 3	16	
C.2323	<b>'D' Washer on Studs</b>	5- 4	16	
NN.131/L	<b>Nut, securing Bearing Caps</b>		16	
FG.105/X	<b>Washer, Spring, under Nuts</b>		16	
C.2157	<b>Core Plug (Headed) on top of Cylinder Head</b>	5- 5	3	
C.2296/2	<b>Washer (Copper) under Headed Core Plug</b>	5- 6	3	
C.15509	<b>Guide for Inlet Valve</b>	5- 7	6	
C.15506	<b>Guide for Exhaust Valve</b>		6	
C.12507	<b>Insert for Inlet Valve</b>	5- 8	6	
C.9865	<b>Insert for Exhaust Valve</b>		6	
C.7262	<b>Guide for Tappets</b>	5- 9	12	
C.14958	<b>CYLINDER HEAD</b>	5- 1	1	<b>FOR XK 150 3.8 LITRE ENGINES</b> Fitted to Chassis No. 820043 and subs. 832098 and subs. 824905 and subs. 836233 and subs. 827373 and subs. 838272 and subs.
C.2326	<b>Stud, in Cylinder Head, for fixing of Camshaft Bearing Caps and Covers</b>	5- 2	16	
C.2373	<b>Ring-Dowel on Studs</b>	5- 3	16	
C.2323	<b>'D' Washer on Studs</b>	5- 4	16	
NN.131/L	<b>Nut, securing Bearing Caps</b>		16	
FG.105/X	<b>Washer, Spring, under Nuts</b>		16	
C.2157	<b>Core Plug (Headed) on top of Cylinder Head</b>	5- 5	3	
C.2296/2	<b>Washer (Copper) under Headed Core Plug</b>	5- 6	3	
C.15509	<b>Guide for Inlet Valve</b>	5- 7	6	
C.15506	<b>Guide for Exhaust Valve</b>		6	
C.12507	<b>Insert for Inlet Valve</b>	5- 8	6	
C.9865	<b>Insert for Exhaust Valve</b>		6	
C.7262	<b>Guide for Tappets</b>	5- 9	12	
C.7861	<b>Gasket, between Cylinder Head and Cylinder Block</b>	5-10	1	<b>FOR 3.4 LITRE ENGINES ONLY.</b>
C.13795	<b>Gasket, between Cylinder Head and Cylinder Block</b>	5-10	1	<b>FOR 3.8 LITRE ENGINES ONLY.</b>
C.2189	<b>Stud (Short) for fixing of Cylinder Head to Timing Cover and Cylinder Block</b>	5-11	4	
NN.131/L	<b>Nut on Studs</b>		4	
FW.105/E	<b>Washer (Copper) under Nuts</b>		4	
C.2325	<b>Stud, in Cylinder Head, for fixing of Exhaust Manifolds</b>	5-12	16	
NN.131/Q	<b>Nut (Bronze) for Exhaust Manifolds Studs</b>		16	
FG.105/X	<b>Washer, Spring, under Nuts</b>		16	
C.11761	<b>Stud, in Cylinder Head, for fixing of Inlet Manifold</b>	5-13	18	
C.4202/2	<b>Nut, on Inlet Manifold Studs</b>		18	
FG.105/X	<b>Washer, Spring, under Nuts</b>		18	
C.6727/1	<b>Stud, in front end of Cylinder Head, for fixing of Camshaft Covers</b>	5-14	6	
C.6727	<b>Stud, in front face of Cylinder Head, for fixing of Breather Housing</b>	5-15	4	
C.317	<b>Core Plug, for Exhaust face of Cylinder Head</b>		2	
C.2328	<b>Dome Nut, securing Cylinder Head to Cylinder Block</b>		14	
C.2385	<b>'D' Washer, under Cylinder Head Dome Nuts</b>		10	
FW.207/T	<b>Washer, Plain, under Cylinder Head Dome Nuts</b>		4	

# CYLINDER HEAD

## FOR XK 150 MODELS ONLY

Part No.	Description	Plate No.	No. per Unit	Remarks
7496	<b>GASKETS PACKAGE FOR DECARBON- ISING ENGINE (SD.1061)</b>		1	<b>XK 150 WITH 3.4 LITRE ENGINE &amp; CABLE OPERATED REV. COUNTER.</b>
8363	<b>GASKETS PACKAGE FOR DECARBON- ISING ENGINE (SD.1094)</b>		1	<b>XK 150 WITH 3.4 LITRE ENGINE AND ELECTRIC REV. COUNTER.</b>
8372	<b>GASKETS PACKAGE FOR DECARBON- ISING ENGINE (SD.1100)</b>		1	<b>XK 150 WITH 3.8 LITRE ENGINE AND ELECTRIC REV. COUNTER.</b>
C.12444	<b>INLET VALVE</b>	5-16	6	
C.7708	<b>EXHAUST VALVE</b>	5-17	6	
C.7137	<b>VALVE SPRING, INNER</b>	5-18	12	
C.7136	<b>VALVE SPRING, OUTER</b>	5-19	12	
C.2181	<b>Seat, for Valve Springs</b>	5-20	12	
C.2159	<b>Collar, at top of Valve Seats</b>	5-21	12	
C.430	<b>Cotter, retaining Collar to Valve Stems</b>	5-22	24	
C.7213/1	<b>TAPPET</b>	5-23	12	

# CYLINDER HEAD

## FOR XK 150 MODELS ONLY

Part No.	Description	Plate No.	No. per Unit	Remarks
<b>VALVE ADJUSTING PADS</b>				
C.2243/A	Adjusting Pad (.085" thick)	5-24	12	<div style="border-left: 1px solid black; border-right: 1px solid black; padding: 0 10px;"> <p><b>SELECTIVE SIZES.</b></p> <p>Choose the Pad of the desired thickness.</p> </div>
C.2243/B	Adjusting Pad (.086" thick)	5-24	12	
C.2243/C	Adjusting Pad (.087" thick)	5-24	12	
C.2243/D	Adjusting Pad (.088" thick)	5-24	12	
C.2243/E	Adjusting Pad (.089" thick)	5-24	12	
C.2243/F	Adjusting Pad (.090" thick)	5-24	12	
C.2243/G	Adjusting Pad (.091" thick)	5-24	12	
C.2243/H	Adjusting Pad (.092" thick)	5-24	12	
C.2243/I	Adjusting Pad (.093" thick)	5-24	12	
C.2243/J	Adjusting Pad (.094" thick)	5-24	12	
C.2243/K	Adjusting Pad (.095" thick)	5-24	12	
C.2243/L	Adjusting Pad (.096" thick)	5-24	12	
C.2243/M	Adjusting Pad (.097" thick)	5-24	12	
C.2243/N	Adjusting Pad (.098" thick)	5-24	12	
C.2243/O	Adjusting Pad (.099" thick)	5-24	12	
C.2243/P	Adjusting Pad (.100" thick)	5-24	12	
C.2243/Q	Adjusting Pad (.101" thick)	5-24	12	
C.2243/R	Adjusting Pad (.102" thick)	5-24	12	
C.2243/S	Adjusting Pad (.103" thick)	5-24	12	
C.2243/T	Adjusting Pad (.104" thick)	5-24	12	
C.2243/U	Adjusting Pad (.105" thick)	5-24	12	
C.2243/V	Adjusting Pad (.106" thick)	5-24	12	
C.2243/W	Adjusting Pad (.107" thick)	5-24	12	
C.2243/X	Adjusting Pad (.108" thick)	5-24	12	
C.2243/Y	Adjusting Pad (.109" thick)	5-24	12	
C.2243/Z	Adjusting Pad (.110" thick)	5-24	12	
C.14985	<b>INLET CAMSHAFT</b>	5-25	1	
C.13081	<b>EXHAUST CAMSHAFT</b>	5-26	1	
C.2288	Bearing, for Camshafts	5-27	16 halves	
C.2324	<b>OIL THROWER AT REAR END OF EXHAUST CAMSHAFT</b>	5-28	1	2 required when Cable operated Rev. Counter is fitted.
NS.137/4D	Screw, Set, securing Oil Thrower to Exhaust Camshaft	5-29	1	
FW.106/E	Washer (Copper) on Setscrew	5-30	1	
C.2312	Sealing Ring, at rear end, between Exhaust Camshaft Cover and Cylinder Head	5-31	1	2 required when Cable operated Rev. Counter is fitted.
C.2312/I	Sealing Ring (Oversize) at rear end, between Exhaust Camshaft Cover and Cylinder Head		1	To be fitted only if necessary to prevent oil leak.
C.2154/1	<b>FLANGED SEALING PLUG AT LEFT-HAND REAR OF CYLINDER HEAD</b>	5-32	1	
C.7134/2	Screw, Set, securing Flanged Plug to Cylinder Head		2	
FW.104/E	Washer (Copper) on Setscrews		2	

# CYLINDER HEAD

## FOR XK 150 MODELS ONLY

Part No.	Description	Plate No.	No. per Unit	Remarks
C.10665	<b>SHAFT, FOR REV. COUNTER DRIVE, ON INLET CAMSHAFT</b>		1	} Fitted from Chassis No. 820001 to 820042 830001 to 832087 824001 to 824904 834001 to 836232 827001 to 827372 837001 to 838271
FW.106/E C.2428	Washer (Copper) between Shaft and Oil Thrower Oil Seal, on Rev. Counter Shaft		1	
			1	
C.12339	<b>ADAPTOR FOR REV. COUNTER SHAFT</b>		1	} Fitted from Chassis No. 820001 to 820042 830001 to 832087 824001 to 824904 834001 to 836232 827001 to 827372 837001 to 838271
C.15924 C.15917	Screw (Allen Head) securing Adaptor to Cylinder Head Plate Washer between head of Screws and Adaptor		2	
			1	
C.9914	<b>REV. COUNTER GEARBOX ON INLET CAMSHAFT</b>		1	} Fitted from Chassis No. 820001 to 820042 830001 to 832087 824001 to 824904 834001 to 836232 827001 to 827372 837001 to 838271
C.10667 C.11777	Gasket, between Rev. Counter Gearbox and Adaptor Screw (Allen Head) securing Rev. Counter Gearbox to Adaptor		1	
			2	
FG.102/X	Washer, Spring, on Screws		2	
			2	
C.7185	<b>COVER FOR RIGHT-HAND (INLET) CAMSHAFT</b>		1	} Fitted from Chassis No. 820001 to 820042 830001 to 832087 824001 to 824904 834001 to 836232 827001 to 827372 837001 to 838271
C.7186	<b>COVER FOR LEFT-HAND (EXHAUST) CAMSHAFT</b>		1	
C.6735	Gasket, between Camshaft Covers and Cylinder Head		2	
C.14991	<b>SEAL, BETWEEN REAR BEARING CAP AND R.H. (INLET) CAMSHAFT COVER</b>	5-33	1	} Fitted to Chassis No. 820043 and subs. 832088 and subs. 824905 and subs. 836233 and subs. 827373 and subs. 838272 and subs.
C.16771	<b>ADAPTOR, AT END OF R.H. (INLET) CAMSHAFT FOR ELECTRIC REV. COUNTER GENERATOR</b>	5-34	1	
C.16772	<b>DRIVING DOG, COUPLING ADAPTOR TO ELECTRIC REV. COUNTER GENERATOR</b>	5-35	1	
C.16773	Circlip, securing Driving Dog to Adaptor	5-36	1	
			1	

# CYLINDER HEAD

## FOR XK 150 MODELS ONLY

Part No.	Description	Plate No.	No. per Unit	Remarks
C.14996	<b>GENERATOR, ON INLET CAMSHAFT FOR ELECTRIC REV. COUNTER</b>	5-37	1	} Fitted to Chassis No. 820043 and subs. 832088 and subs. 824905 and subs. 836233 and subs. 827373 and subs. 838272 and subs.
C.14990	'O' Ring on Generator	5-38	1	
C.14992	Screw (Allen Head) securing Generator to Cylinder Head	5-39	3	
C.15918	Plate Washer, on Screws, adjacent to Cylinder Head	5-40	1	
C.15919	Lock Washer between head of Screws and Plate Washer	5-41	3	
C.7185	<b>COVER FOR R.H. (INLET) CAMSHAFT</b>	5-42	1	} Fitted to Chassis No. 820043 and subs. 832088 and subs. 824905 and subs. 836233 and subs. 827373 and subs. 838272 and subs.
C.14987	<b>COVER FOR L.H. (EXHAUST) CAMSHAFT</b>	5-43	1	
C.6735	Gasket between L.H. Camshaft Cover and Cylinder Head	5-44	1	
C.14988	Gasket between R.H. Camshaft Cover and Cylinder Head	5-45	1	
C.2327 FW.104/E	Dome Nut, securing Camshaft Covers to Cylinder Head Washer (Copper) under Dome Nuts	5-46 5-47	22 22	
C.1022	<b>OIL FILLER CAP ON LEFT-HAND CAMSHAFT COVER</b>	5-48	1	
C.419	Washer (Fibre) on Filler Cap	5-49	1	
C.5849	<b>OIL PIPE FROM CYLINDER BLOCK TO REAR OF CYLINDER HEAD</b>	5-50	1	
C.5846	Banjo Bolt, securing Oil Pipe to Cylinder Head and Block	5-51	3	
C.4146	Washer (Copper) at each side of Banjo Bolts	5-52	6	
C.2389	<b>FRONT COVER AND BREATHER HOUSING</b>	5-53	1	
C.2391	Pipe, in Cover	5-54	1	
C.2390	Baffle, behind Cover	5-55	1	
C.2227	Gasket, front and rear of Baffle	5-56	2	
C.2327	Dome Nut, securing Cover to Cylinder Head	5-57	4	
FG.104/X	Washer, Spring, under Nuts	5-58	4	

# CYLINDER HEAD

FOR XK 150 MODELS ONLY

Part No.	Description	Plate No.	No. per Unit	Remarks
C.15400	<b>FLEXIBLE PIPE FOR BREATHER ON FRONT COVER (33" LONG)</b>	5-59	1	
C.2905/3	Clip, securing Flexible Pipe to tube in front cover	5-60	1	
C.1040/21	Clip, securing Flexible Pipe at bottom and top	5-61	2	
NS.125/4D	Screw, Set, securing bottom clip		1	
NN.125/L	Nut, on Setscrews		1	
C.724	Washer, Shakeproof, under Nut		1	
C.13822	<b>EXHAUST MANIFOLD, FRONT</b>	5-62	1	
C.13823	<b>EXHAUST MANIFOLD, REAR</b>	5-63	1	
C.2318	Gasket, between Exhaust Manifolds and Cylinder Head	5-64	2	
C.2369	Stud, in outlet flanges of Exhaust Manifolds, for attachment of Exhaust Down Pipes	5-65	8	
NN.137/Q	Nut (Bronze) securing Exhaust Pipes to Manifolds		8	
FG.106/X	Washer, Spring, under Nuts		8	
C.495	Gasket, between outlet flanges of Manifolds and Exhaust Down Pipes	5-66	2	
C.12438/A	<b>INLET MANIFOLD</b>		1	} Fitted from Chassis No. 820001 to 820016 830001 to 831898 824001 to 824741 834001 to 835934 827001 to 827271 837001 to 837940
C.317	Welch Washer, at end of Inlet Manifold		1	
C.14651/A	<b>INLET MANIFOLD</b>	5-67	1	} Fitted to Chassis No. 820017 and subs. 831899 and subs. 824742 and subs. 835935 and subs. 827272 and subs. 837941 and subs.
C.317	Welch Washer, at end of Inlet Manifold		1	
C.7619	Gasket, between Inlet Manifold and Cylinder Head	5-68	1	
C.2496	Stud, in Inlet Manifold, for attachment of Water Outlet		8	
C.6570	Stud, in Inlet Manifold, for attachment of Carburettors		8	
C.12946	Sleeve Nut, on Inlet Manifold Studs		2	Fitted from Chassis No. 830001 to 831139 824001 to 824584 834001 to 835712 827001 to 827193 837001 to 837627
C.4202/2	Nut on Studs		16	
FG.105/X	Washer, Spring, under Nuts		16	
C.12472	Stud, in Inlet Manifold, for attachment of Flange for Brake Servo Vacuum Pipe		4	Fitted from Chassis No. 830001 to 831139 824001 to 824584 834001 to 835712 827001 to 827193 837001 to 837627
C.13632	Screw, Set, (Chrome) plugging redundant hole in Inlet Manifold		1	} <b>NOT REQUIRED WHEN OVER-DRIVE OR AUTOMATIC TRANSMISSION IS FITTED.</b>
C.13633	Washer (Copper) on Setscrew		1	



# CYLINDER HEAD

## FOR XK 150 MODELS ONLY

Part No.	Description	Plate No.	No. per Unit	Remarks
C.13254	<b>FLANGE ASSEMBLY FOR ATTACHMENT OF VACUUM PIPE TO BRAKE SERVO</b>		1	} Fitted from Chassis No. 820001 to 820016 830001 to 831898 824001 to 824741 834001 to 835934 827001 to 827271 837001 to 837940
C.12453	Gasket under Flange		1	
NN.125/L FG.104/X	Nut, securing Flange to Inlet Manifold Washer, Spring, under Nuts		4 4	
C.13928	<b>HOSE, BETWEEN FLANGE AND VACUUM PIPE</b>		1	} Fitted from Chassis No. 820001 to 820016 830001 to 831898 824001 to 824741 834001 to 835934 827001 to 827271 837001 to 837940
C.2905/2	Clip for Hose		1	
C.13256	<b>VACUUM PIPE FROM HOSE ON INLET MANIFOLD TO BRAKE SERVO</b>		1	} Fitted from Chassis No. 830001 to 831139 824001 to 824584 834001 to 835718 827001 to 827193 837001 to 837627
C.13257	Clip, securing Vacuum Pipe to Exhaust Manifold		1	
NS.119/9D	Screw, Set, securing Clip		1	
C.11583	Distance Piece on Setscrew		1	
AW.102/T	Washer, Plain, on Setscrew		1	
C.723/A NN.119/L	Washer, Shakeproof, on Setscrew Nut on Setscrew		1 1	
C.14214	<b>VACUUM PIPE FROM HOSE ON INLET MANIFOLD TO BRAKE SERVO</b>		1	} Fitted from Chassis No. 820001 to 820016 831140 to 831898 824585 to 824741 835719 to 835934 827194 to 827271 837628 to 837940
C.14209	Bracket for Clip		1	
UFS.119/4R	Screw, Set, securing Bracket		1	
C.14325	Clip, securing Vacuum Pipe to Exhaust Manifold		1	
NS.119/9D	Screw, Set, securing Clip		1	
C.11583	Distance Piece on Setscrew		1	
AW.102/T	Washer, Plain, on Setscrew		1	
NN.119/L C.723/A	Nut on Setscrew Washer, Shakeproof, under Nut		1 1	
C.13758	Clip, securing Vacuum Pipe to Inlet Manifold		1	} Fitted from Chassis No. 820001 to 820016 830001 to 831898 824001 to 824741 834001 to 835934 827001 to 827271 837001 to 837940
AS.119/4D	Screw, Set, securing Clip		1	
NN.119/L	Nut on Setscrew		1	
C.723/A	Washer, Shakeproof, under Nut		1	
C.12481	<b>VALVE, IN INLET MANIFOLD, FOR BRAKE SERVO VACUUM PIPE (70149)</b>		1	} Fitted from Chassis No. 820001 to 820016 830001 to 831898 824001 to 824741 834001 to 835934 827001 to 827271 837001 to 837940
C.12480	Spring for Valve (70150)		1	
C.12482	Seat for Valve (70332)		1	

# CYLINDER HEAD

## FOR XK 150 MODELS ONLY

Part No.	Description	Plate No.	No. per Unit	Remarks
C.12448	<b>STARTING PIPE BETWEEN FLANGE ON INLET MANIFOLD AND CARBURETTER</b>		1	} Fitted from Chassis No. 820001 to 820016 830001 to 831898 824001 to 824741 834001 to 835934 827001 to 827271 837001 to 837940
C.13553	Olive on Starting Pipe		1	
C.13554	Nut, securing Starting Pipe to Carburetter		1	
C.12454	'O' Ring, on Starting Pipe, between Flange and Inlet Manifold		1	Fitted from Chassis No. 820001 to 820016 830001 to 831898 824001 to 824741 834001 to 835934 827001 to 827271 837001 to 837940
C.14652	<b>L.H. MANIFOLD STARTING PIPE ASSEMBLY</b>	5-69	1	} Fitted to Chassis No. 820017 and subs. 831899 and subs. 824742 and subs. 835935 and subs. 827272 and subs. 837941 and subs.
C.14658	Olive on Starting Pipe		3	
C.14659	Tubing Nut on Starting Pipe		3	
C.14653	<b>R.H. MANIFOLD STARTING PIPE ASSEMBLY</b>	5-70	1	} Fitted to Chassis No. 820017 and subs. 831899 and subs. 824742 and subs. 835935 and subs. 827272 and subs. 837941 and subs.
C.14658	Olive on Starting Pipe		3	
C.14659	Tubing Nut on Starting Pipe		3	
C.14661	<b>STARTING PIPE ASSEMBLY FROM MANIFOLD PIPES TO CARBURETTER</b>	5-71	1	} Fitted to Chassis No. 820017 and subs. 831899 and subs. 824742 and subs. 835935 and subs. 827272 and subs. 837941 and subs.
C.13553	Olive on Starting Pipe		1	
C.13554	Tubing Nut on Starting Pipe		1	
C.14683	<b>NEOPRENE TUBE CONNECTING MANIFOLD AND CARBURETTER STARTING PIPES</b>	5-72	2	} Fitted to Chassis No. 820017 and subs. 831899 and subs. 824742 and subs. 835935 and subs. 827272 and subs. 837941 and subs.
C.2905/1	Clip, securing Neoprene Tubes	5-73	4	
C.14133	<b>WATER OUTLET PIPE</b>	5-74	1	
C.12309	Gasket, between Water Outlet Pipe and Inlet Manifold	5-75	4	
C.2496	Stud, in Water Outlet Pipe, for attachment of Outlet Elbow		2	I only required for L.H. Drive Cars.
C.13074	Stud, in Water Outlet Pipe, for attachment of Outlet Elbow		1	Required for L.H. Drive Car only.
C.13632	Screw, Set (Chrome) plugging redundant hole in Water Outlet Pipe		1	
C.13633	Washer (Copper) on Setscrew		1	
C.9621	Adaptor, in Water Outlet Pipe, for attachment of Thermometer Gauge Capillary Tube		1	
C.2296/1	Washer (Copper) on Adaptor		1	

# CYLINDER HEAD

## FOR XK 150 MODELS ONLY

Part No.	Description	Plate No.	No. per Unit	Remarks
C.12867	<b>THERMOSTAT IN WATER OUTLET PIPE (OPENING TEMPERATURE 159° TO 168°F.)</b>	5-76	1	STANDARD FITMENT.
C.12867/1	<b>THERMOSTAT IN WATER OUTLET PIPE (OPENING TEMPERATURE 174° TO 183°F.)</b>		1	FOR USE ONLY IN COLD CLIMATES
C.2474	<b>THERMOSTAT, IN INLET MANIFOLD, OPERATING CARBURETTER AUTOMATIC CHOKE</b>	5-77	1	
C.2475	Gasket, between Thermostat and Inlet Manifold	5-78	1	
C.7134/1	Screw, Set, securing Thermostat to Manifold		3	
C.723/A	Washer, Shakeproof, on Setscrews		3	
C.12422	<b>WATER OUTLET ELBOW</b>	5-79	1	
C.4985	Gasket, for Water Outlet Elbow	5-80	1	
C.4202/2	Nut, securing Water Outlet Elbow to Outlet Pipe		2	
FG.105/X	Washer, Spring, under Nuts		2	
C.4380	<b>SPARKING PLUG (CHAMPION L7)</b>		6	FOR 7:1 COMPRESSION RATIO ENGINES.
C.2460	<b>SPARKING PLUG (CHAMPION N.5)</b>		6	FOR 8:1 COMPRESSION RATIO ENGINES.
<b>HIGH TENSION SPARKING PLUG LEADS</b>				
C.4976	Lead, to No. 1 Sparking Plug		1	
C.4977	Lead, to No. 2 Sparking Plug		1	
C.4978	Lead, to No. 3 Sparking Plug		1	
C.4979	Lead, to No. 4 Sparking Plug		1	
C.4980	Lead, to No. 5 Sparking Plug		1	
C.4981	Lead, to No. 6 Sparking Plug		1	
C.4741	Lead, to Coil		1	

# CYLINDER HEAD

FOR XK 150 MODELS ONLY

Part No.	Description	Plate No.	No. per Unit	Remarks
C.8306	TERMINAL FOR SPARKING PLUG LEADS (INCORPORATING SUPPRESSOR)		6	FOR EXPORT ONLY.
C.5479	TERMINAL FOR SPARKING PLUG LEADS		6	
C.2451	CONDUIT, ALONG CENTRE OF CYLINDER HEAD, ENCLOSING SPARKING PLUG LEADS		1	
C.4983	SPACER FOR SPARKING PLUG LEADS (THICK)		2	
C.4984	SPACER FOR SPARKING PLUG LEADS (THIN)		3	
C.4982	CLIP AROUND THICK SPACER		1	

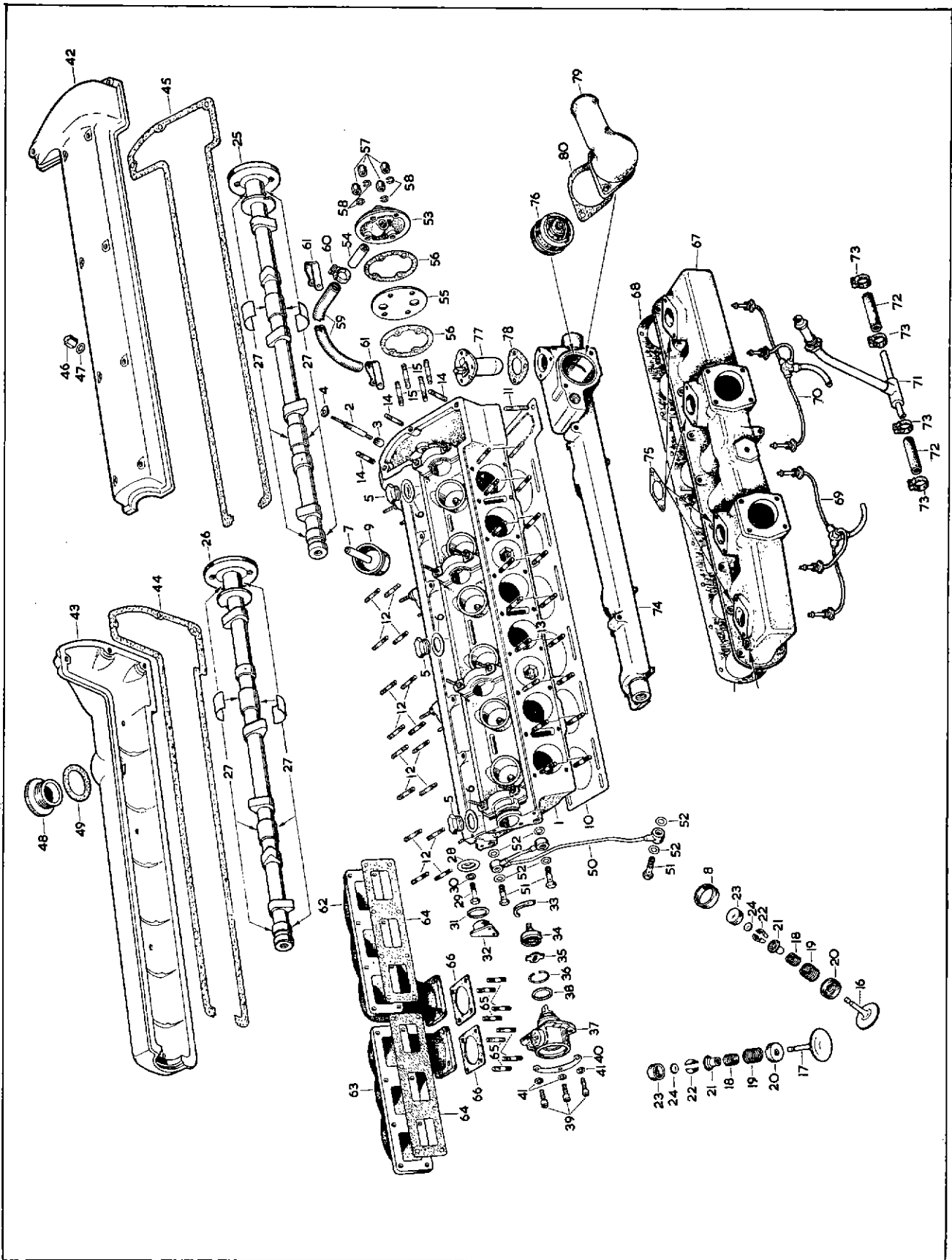


PLATE 5

# CYLINDER HEAD

FOR XK 150 'S' MODELS ONLY

Part No.	Description	Plate No.	No. per Unit	Remarks
7672	<b>CYLINDER HEAD ASSEMBLY, COMPLETE (SD.1066)</b> (Comprising Cylinder Head, Valves, Valve Inserts, Guides, Springs, Tappets, Tappet Guides, Adjusting Pads, Camshafts, Camshaft Gears, Filler Cap, Rev. Counter Gearbox, Breather Cover, etc.)		1	Fitted from Chassis No. 820001 to 820042 830001 to 832087 824001 to 824904 834001 to 836232 827001 to 827372 837001 to 838271
8377	<b>CYLINDER HEAD ASSEMBLY, COMPLETE (SD.1105)</b> (Comprising Cylinder Head, Valves, Valve Inserts, Guides, Springs, Tappets, Tappet Guides, Adjusting Pads, Camshafts, Camshaft Covers, Filler Cap, Rev. Counter Generator, Breather Cover, etc.)		1	Fitted to Chassis No. 820043 and subs. 832088 and subs. 824905 and subs. 836233 and subs. 827373 and subs. 838272 and subs.
C.12600	<b>CYLINDER HEAD</b>		1	<b>FOR 3.4 LITRE ENGINES</b> Fitted from Chassis No. 820001 to 820042 830001 to 832087 824001 to 824904 834001 to 836232 827001 to 827372 837001 to 838271
C.2326	Stud, in Cylinder Head, for fixing of Camshaft Bearing Caps and Covers		16	
C.2373	Ring-Dowel on Studs		16	
C.2323	'D' Washer on Studs		16	
NN.131/L	Nut securing Bearing Caps		16	
FG.105/X	Washer, Spring, under Nuts		16	
C.2157	Core Plug (Headed) on top of Cylinder Head		3	
C.2296/2	Washer (Copper) under Headed Core Plug		3	
C.15509	Guide for Inlet Valve		6	
C.15506	Guide for Exhaust Valve		6	
C.12507	Insert for Inlet Valve		6	
C.9865	Insert for Exhaust Valve		6	
C.7262	Guide for Tappets		12	

# CYLINDER HEAD

## FOR XK 150 'S' MODELS ONLY

Part No.	Description	Plate No.	No. per Unit	Remarks
C.14957	<b>CYLINDER HEAD</b>	6- 1	1	<b>FOR 3.4 OR 3.8 LITRE ENGINES</b> Fitted to Chassis No. 820043 and subs. 832088 and subs. 824905 and subs. 836233 and subs. 827373 and subs. 838272 and subs.
C.2326	<b>Stud</b> , in Cylinder Head, for fixing of Camshaft Bearing Caps and Covers	6- 2	16	
C.2373	<b>Ring-Dowel</b> on Studs	6- 3	16	
C.2323	<b>'D' Washer</b> on Studs	6- 4	16	
NN.131/L	<b>Nut</b> securing Bearing Caps		16	
FG.105/X	<b>Washer, Spring</b> , under Nuts		16	
C.2157	<b>Core Plug</b> (Headed) on top of Cylinder Head	6- 5	3	
C.2296/2	<b>Washer</b> (Copper) under Headed Core Plug	6- 6	3	
C.15509	<b>Guide</b> for Inlet Valve	6- 7	6	
C.15506	<b>Guide</b> for Exhaust Valve		6	
C.12507	<b>Insert</b> for Inlet Valve	6- 8	6	
C.9865	<b>Insert</b> for Exhaust Valve		6	
C.7262	<b>Guide</b> for Tappets	6- 9	12	
C.11530	<b>Core Plug</b> on Inlet Face of Cylinder Head		2	
C.11531	<b>Washer</b> (Copper) on Core Plug		2	
C.7861	<b>Gasket</b> , between Cylinder Head and Cylinder Block	6-10	1	
C.2189	<b>Stud</b> (Short) for fixing of Cylinder Head to Timing Cover and Cylinder Block	6-11	4	
NN.131/L	<b>Nut</b> on Studs		4	
FW.105/E	<b>Washer</b> (Copper) under Nuts		4	
C.2325	<b>Stud</b> , in Cylinder Head, for fixing of Exhaust Manifolds	6-12	16	
NN.131/Q	<b>Nut</b> (Bronze) for Exhaust Manifold Studs		16	
FG.105/X	<b>Washer, Spring</b> , under Nuts		16	
C.11761	<b>Stud</b> , in Cylinder Head, for fixing of Inlet Manifold	6-13	18	
C.4202/2	<b>Nut</b> on Inlet Manifold Studs		18	
FG.105/X	<b>Washer, Spring</b> , under Nuts		18	
C.6727/1	<b>Stud</b> , in front end of Cylinder Head for fixing of Camshaft Covers	6-14	6	
C.6727	<b>Stud</b> , in front face of Cylinder Head, for fixing of Breather Housing	6-15	4	
C.317	<b>Core Plug</b> for Exhaust face of Cylinder Head		2	
C.2328	<b>Dome Nut</b> securing Cylinder Head to Cylinder Block		14	
C.2385	<b>'D' Washer</b> under Dome Nuts		10	
FW.207/T	<b>Washer, Plain</b> , under Dome Nuts		4	
7996	<b>GASKETS PACKAGE FOR DECARBONISING ENGINE (SD.1077)</b>		1	<b>FOR XK 150 'S' WITH 3.4 LITRE ENGINE AND EITHER CABLE OPERATED OR ELECTRIC REV. COUNTER.</b>
8374	<b>GASKETS PACKAGE FOR DECARBONISING ENGINE (SD.1102)</b>		1	<b>FOR XK 150 'S' WITH 3.8 LITRE ENGINE AND EITHER CABLE OPERATED OR ELECTRIC REV. COUNTER.</b>

# CYLINDER HEAD

FOR XK 150 'S' MODELS ONLY

Part No.	Description	Plate No.	No. per Unit	Remarks
C.12444	<b>INLET VALVE</b>	6-16	6	
C.7708	<b>EXHAUST VALVE</b>	6-17	6	
C.7137	<b>VALVE SPRING, INNER</b>	6-18	12	
C.7136	<b>VALVE SPRING, OUTER</b>	6-19	12	
C.2181	Seat for Valve Springs	6-20	12	
C.2159	Collar at top of Valve Stems	6-21	12	
C.430	Cotter, retaining Collar to Valve Stems	6-22	24	
C.7213/I	<b>TAPPET</b>	6-23	12	
<b>VALVE ADJUSTING PADS</b>				
C.2243/A	Adjusting Pad (.085" thick)	6-24	12	<b>SELECTIVE SIZES.</b> Choose the Pad of the desired thickness.
C.2243/B	Adjusting Pad (.086" thick)	6-24	12	
C.2243/C	Adjusting Pad (.087" thick)	6-24	12	
C.2243/D	Adjusting Pad (.088" thick)	6-24	12	
C.2243/E	Adjusting Pad (.089" thick)	6-24	12	
C.2243/F	Adjusting Pad (.090" thick)	6-24	12	
C.2243/G	Adjusting Pad (.091" thick)	6-24	12	
C.2243/H	Adjusting Pad (.092" thick)	6-24	12	
C.2243/I	Adjusting Pad (.093" thick)	6-24	12	
C.2243/J	Adjusting Pad (.094" thick)	6-24	12	
C.2243/K	Adjusting Pad (.095" thick)	6-24	12	
C.2243/L	Adjusting Pad (.096" thick)	6-24	12	
C.2243/M	Adjusting Pad (.097" thick)	6-24	12	
C.2243/N	Adjusting Pad (.098" thick)	6-24	12	
C.2243/O	Adjusting Pad (.099" thick)	6-24	12	
C.2243/P	Adjusting Pad (.100" thick)	6-24	12	
C.2243/Q	Adjusting Pad (.101" thick)	6-24	12	
C.2243/R	Adjusting Pad (.102" thick)	6-24	12	
C.2243/S	Adjusting Pad (.103" thick)	6-24	12	
C.2243/T	Adjusting Pad (.104" thick)	6-24	12	
C.2243/U	Adjusting Pad (.105" thick)	6-24	12	
C.2243/V	Adjusting Pad (.106" thick)	6-24	12	
C.2243/W	Adjusting Pad (.107" thick)	6-24	12	
C.2243/X	Adjusting Pad (.108" thick)	6-24	12	
C.2243/Y	Adjusting Pad (.109" thick)	6-24	12	
C.2243/Z	Adjusting Pad (.110" thick)	6-24	12	



# CYLINDER HEAD

## FOR XK 150 'S' MODELS ONLY

Part No.	Description	Plate No.	No. per Unit	Remarks
C.14985	<b>INLET CAMSHAFT</b>	6-25	1	
C.13081	<b>EXHAUST CAMSHAFT</b>	6-26	1	
C.2288	<b>Bearing, for Camshafts</b>	6-27	16 halves	
C.2324	<b>OIL THROWER AT REAR END OF EXHAUST CAMSHAFT</b>	6-28	1	2 required when Cable operated Rev. Counter is fitted.
NS.137/4D FW.106/E	<b>Screw, Set, securing Oil Thrower to Exhaust Camshaft Washer (Copper) on Setscrew</b>	6-29 6-30	1 1	
C.2312	<b>Sealing Ring, at rear end, between Exhaust Camshaft Cover and Cylinder Head</b>	6-31	1	2 required when Cable operated Rev. Counter is fitted.
C.2312/1	<b>Sealing Ring (Oversize) at rear end, between Exhaust Camshaft Cover and Cylinder Head</b>		1	2 required when Cable operated Rev. Counter is Fitted. To be fitted only if necessary to prevent oil leak.
C.2154/1	<b>FLANGED SEALING PLUG AT L.H. REAR OF CYLINDER HEAD</b>	6-32	1	
C.7134/2 FW.104/E	<b>Screw, Set, securing Flanged Plug to Cylinder Head Washer (Copper) on Setscrews</b>		2 2	
C.10665	<b>SHAFT, ON R.H. (INLET) CAMSHAFT, FOR CABLE OPERATED REV. COUNTER DRIVE</b>		1	} Fitted from Chassis No. 820001 to 820042 830001 to 832087 824001 to 824904 834001 to 836232 827001 to 827372 837001 to 838271
FW.106/E C.2428	<b>Washer (Copper) between Shaft and Oil Thrower Oil Seal, on Drive Shaft</b>		1	
C.12339	<b>ADAPTOR FOR CABLE OPERATED REV. COUNTER SHAFT</b>		1	} Fitted from Chassis No. 820001 to 820042 830001 to 832087 824001 to 824904 834001 to 836232 827001 to 827372 837001 to 838271
C.15924	<b>Screw (Allen Head) securing Adaptor to Cylinder Head</b>		2	
C.15917	<b>Plate Washer between head of Screws and Adaptor</b>		1	

# CYLINDER HEAD

## FOR XK 150 'S' MODELS ONLY

Part No.	Description	Plate No.	No. per Unit	Remarks
C.9774	<b>REV. COUNTER GEARBOX ON INLET CAMSHAFT FOR CABLE OPERATED REV. COUNTER</b>		1	} Fitted from Chassis No. 820001 to 820042 830001 to 832087 824001 to 824904 834001 to 836232 827001 to 827372 837001 to 838271
C.10667	Gasket, between Rev. Counter Gearbox and Adaptor		1	
C.11777	Screw (Allen Head) securing Rev. Counter Gearbox to Adaptor		2	
FG.102/X	Washer, Spring, on Screws		2	
C.7185	<b>COVER FOR R.H. (INLET) CAMSHAFT</b>		1	} Fitted from Chassis No. 820001 to 820042 830001 to 832087 824001 to 824904 834001 to 836232 827001 to 827372 837001 to 838271
C.7186	<b>COVER FOR L.H. (EXHAUST) CAMSHAFT</b>		1	
C.6735	Gasket, between Camshaft Covers and Cylinder Head		2	
C.14991	<b>SEAL BETWEEN REAR BEARING CAP AND R.H. (INLET) CAMSHAFT COVER</b>	6-33	1	} Fitted to Chassis No. 820043 and subs. 832088 and subs. 824905 and subs. 836233 and subs. 827373 and subs. 838272 and subs.
C.16771	<b>ADAPTOR, AT END OF R.H. (INLET) CAMSHAFT, FOR ELECTRIC REV. COUNTER GENERATOR</b>	6-34	1	
C.16772	<b>DRIVING DOG, COUPLING ADAPTOR TO ELECTRIC REV. COUNTER GENERATOR</b>	6-35	1	
C.16773	Circlip, securing Driving Dog to Adaptor	6-36	1	
C.14996	<b>GENERATOR, ON INLET CAMSHAFT, FOR ELECTRIC REV. COUNTER</b>	6-37	1	} Fitted to Chassis No. 820043 and subs. 832088 and subs. 824905 and subs. 836233 and subs. 827373 and subs. 838272 and subs.
C.14990	'O' Ring on Generator	6-38	1	
C.14992	Screw (Allen Head) securing Generator to Cylinder Head	6-39	3	
C.15918	Plate Washer, on Screws, adjacent to Cylinder Head	6-40	1	
C.15919	Lock Washer between head of Screws and Plate Washer	6-41	3	

# CYLINDER HEAD

## FOR XK 150 'S' MODELS ONLY

Part No.	Description	Plate No.	No. per Unit	Remarks
C.7185	<b>COVER FOR R.H. (INLET) CAMSHAFT</b>	6-42	1	} Fitted to Chassis No. 820043 and subs. 832088 and subs. 824905 and subs. 836233 and subs. 827373 and subs. 838272 and subs.
C.14987	<b>COVER FOR L.H. (EXHAUST) CAMSHAFT</b>	6-43	1	
C.6735	<b>Gasket</b> between L.H. Camshaft Cover and Cylinder Head	6-44	1	
C.14988	<b>Gasket</b> between R.H. Camshaft Cover and Cylinder Head	6-45	1	
C.2327 FW.104/E	<b>Dome Nut</b> , securing Camshaft Covers to Cylinder Head <b>Washer</b> (Copper) under Dome Nuts	6-46 6-47	22 22	
C.1022	<b>OIL FILLER CAP ON L.H. CAMSHAFT COVER</b>	6-48	1	
C.419	<b>Washer</b> (Fibre) on Filler Cap	6-49	1	
C.5849	<b>OIL PIPE FROM CYLINDER BLOCK TO REAR OF CYLINDER HEAD</b>	6-50	1	
C.5846	<b>Banjo Bolt</b> , securing Oil Pipe to Cylinder Head and Block	6-51	3	
C.4146	<b>Washer</b> (Copper) at each side of Banjo Bolts	6-52	6	
C.2389	<b>FRONT COVER AND BREATHER HOUSING</b>	6-53	1	
C.2391	<b>Pipe</b> , in Cover	6-54	1	
C.2390	<b>Baffle</b> , behind Cover	6-55	1	
C.2227	<b>Gasket</b> , front and rear of Baffle	6-56	2	
C.2327	<b>Dome Nut</b> , securing Cover to Cylinder Head	6-57	4	
FG.104/X	<b>Washer</b> , Spring, under Nuts	6-58	4	
C.15400	<b>FLEXIBLE PIPE FOR BREATHER ON FRONT COVER (33" LONG)</b>	6-59	1	
C.2905/3	<b>Clip</b> , securing Flexible Pipe to tube in front cover	6-60	1	
C.1040/21	<b>Clip</b> , securing Flexible Pipe to Wing Valance	6-61	2	
NS.125/4D	<b>Screw</b> , Set, securing Clips to Wing Valance		2	
NN.125/L	<b>Nut</b> , on Setscrews		2	
C.724	<b>Washer</b> , Shakeproof, under Nut		2	

# CYLINDER HEAD

## FOR XK 150 'S' MODELS ONLY

Part No.	Description	Plate No.	No. per Unit	Remarks
C.13822	<b>EXHAUST MANIFOLD, FRONT</b>	6-62	1	
C.13823	<b>EXHAUST MANIFOLD, REAR</b>	6-63	1	
C.2318	<b>Gasket</b> , between Exhaust Manifolds and Cylinder Head	6-64	2	
C.2369	<b>Stud</b> , in outlet flanges of Exhaust Manifolds, for attachment of Exhaust Down Pipes	6-65	8	
NN.137/Q	<b>Nut</b> (Bronze) securing Exhaust Pipes to Manifolds		8	
FG.106/X	<b>Washer</b> , Spring, under Nuts		8	
C.495	<b>Gasket</b> , between outlet flanges of Manifolds and Exhaust Down Pipes	6-66	2	
C.13941	<b>INLET MANIFOLD, FRONT</b>	6-67	1	
C.13942	<b>INLET MANIFOLD, CENTRE</b>	6-68	1	
C.13943	<b>INLET MANIFOLD, REAR</b>	6-69	1	
C.14127	<b>Gasket</b> between Inlet Manifolds and Cylinder Head	6-70	3	
C.2496	<b>Stud</b> , in Inlet Manifold, for attachment of Water Outlet and Air Balance Pipes		12	
C.6570	<b>Stud</b> , in Inlet Manifold, for attachment of Carburetters		12	
C.4202/2	<b>Nut</b> on Studs		22	
C.12799	<b>Sleeve Nut</b> , on Studs, for Ignition Coil Mounting Bracket	6-71	2	
FG.105/X	<b>Washer</b> , Spring, under Nuts		24	
C.14156	<b>BRACKET, ON SLEEVE NUTS, FOR MOUNTING OF IGNITION COIL</b>	6-72	1	
UFS.125/4R	<b>Screw</b> , Set, securing Bracket to Sleeve Nuts		2	
FG.104/X	<b>Washer</b> , Spring, on Setscrews		2	
C.13940	<b>AIR BALANCE PIPE</b>		1	Fitted from Chassis No. 820005 to 820016 830336 to 831898
C.14747	<b>AIR BALANCE PIPE</b>	6-73	1	Fitted to Chassis No. 820017 and subs. 831899 and subs.
C.11577	<b>Gasket</b> between Air Balance Pipe and Inlet Manifold	6-74	3	
C.12472	<b>Stud</b> , in Balance Pipe for attachment of Brake Servo Adaptor	6-75	2	

# CYLINDER HEAD

FOR XK 150 'S' MODELS ONLY

Part No.	Description	Plate No.	No. per Unit	Remarks
C.14807	<b>ADAPTOR, AT REAR OF AIR BALANCE PIPE, FOR CONNECTION OF BRAKE SERVO VACUUM PIPE</b>		1	Fitted from Chassis No. 820005 to 820016 830016 to 831898
C.14089	Gasket between Adaptor and Balance Pipe		1	
NN.125/L	Nut, securing Adaptor		2	
FG.104/X	Washer, Spring, under Nuts		2	
C.12481	<b>CHECK VALVE BEHIND ADAPTOR (70149)</b>		1	
C.12480	Spring under Check Valve (70150)		1	
C.12482	Seat for Check Valve (70332)		1	
C.13928	<b>HOSE BETWEEN ADAPTOR AND VACUUM PIPE</b>		1	Fitted from Chassis No. 820005 to 820016 830016 to 831898
C.2905/2	Clip, securing Hose		2	
C.14202	<b>VACUUM PIPE FROM HOSE TO SERVO UNIT</b>		1	
C.14325	Clip, securing Vacuum Pipe to Exhaust Manifold		1	
C.14209	Bracket holding Clip		1	
C.11583	Distance Piece between Bracket and Exhaust Manifold		1	
NS.119/4D	Screw, Set, securing Clip		1	
AW.102/T	Washer, Plain, on Setscrew		1	
NN.119/L	Nut on Setscrew		1	
C.723/A	Washer, Shakeproof, under Nut		1	
C.14746	<b>ADAPTOR, AT REAR OF AIR BALANCE PIPE, FOR BRAKE SERVO</b>	6-76	1	Fitted to Chassis No. 820017 and subs. 831899 and subs.
C.14089	Gasket between Adaptor and Balance Pipe	6-77	1	
NN.125/L	Nut securing Adaptor		2	
FG.104/X	Washer, Spring, under Nuts		2	
C.14692	<b>HOSE BETWEEN ADAPTOR AND VACUUM PIPE</b>	6-78	1	
C.2905/2	Clip securing Hose	6-79	2	
C.14743	<b>VACUUM PIPE FROM HOSE TO SERVO UNIT</b>	6-80	1	
C.1040/9	Clip, securing Vacuum Pipe to Dash	6-81	2	
UFS.119/4R	Screw, Set, securing Clips		2	
C.723/A	Washer, Shakeproof, under Nuts		2	
AW.102/T	Washer, Plain, under Shakeproof Washers		2	

# CYLINDER HEAD

FOR XK 150 'S' MODELS ONLY

Part No.	Description	Plate No.	No. per Unit	Remarks
C.14082	<b>STARTING PIPE ASSEMBLY</b>	6-82	1	
C.13553	Olive on $\frac{1}{2}$ " diameter Pipe		1	
C.13554	Nut for $\frac{1}{2}$ " diameter Pipe		1	
C.11575	Olive on $\frac{3}{8}$ " diameter Pipe		2	
C.11576	Nut for $\frac{3}{8}$ " diameter Pipe		2	
C.13939	<b>WATER OUTLET PIPE</b>	6-83	1	
C.11577	Gasket for Water Outlet Pipe	6-84	3	
C.2496	Stud, in Water Outlet Pipe, for attachment of Outlet Elbow		2	1 required for L.H. Drive Cars.
C.13074	Stud, in Water Outlet Pipe, for attachment of Outlet Elbow		1	Required only for L.H. Drive Cars.
C.13632	Screw, Set, (Chrome) plugging redundant hole in Water Outlet Pipe		1	
C.13633	Washer (Copper) on Setscrew		1	
C.12867	<b>THERMOSTAT IN WATER OUTLET PIPE (OPENING TEMPERATURE 159° TO 183°F.)</b>	6-85	1	<b>STANDARD FITMENT.</b>
C.12867/1	<b>THERMOSTAT IN WATER OUTLET PIPE (OPENING TEMPERATURE 174° TO 183°F.)</b>	6-85	1	<b>FOR USE ONLY IN COLD CLIMATES.</b>
C.2474	<b>THERMOSTAT, IN OUTLET ELBOW, OPERATING CARBURETTER AUTOMATIC CHOKE</b>	6-86	1	
C.2475	Gasket between Thermostat and Inlet Manifold	6-87	1	
C.7134/1	Screw, Set, securing Thermostat to Manifold		3	
C.723/A	Washer, Shakeproof, on Setscrews		3	
C.12422	<b>WATER OUTLET ELBOW</b>	6-88	1	
C.4985	Gasket for Water Outlet Elbow	6-89	1	
C.4202/2	Nut, securing Water Outlet Elbow to Outlet Pipe		2	
FG.105/X	Washer, Spring, under Nuts		2	

# CYLINDER HEAD

## FOR XK 150 'S' MODELS ONLY

Part No.	Description	Plate No.	No. per Unit	Remarks
C.4380	<b>SPARKING PLUG (CHAMPION L.7)</b>		6	<b>FOR 7 : 1 COMPRESSION RATIO ENGINES.</b>
C.2460	<b>SPARKING PLUG (CHAMPION N.5)</b>		6	<b>FOR 8 : 1 COMPRESSION RATIO ENGINES.</b>
<b>HIGH TENSION SPARKING PLUG LEADS</b>				
C.4976	Lead to No. 1 Sparking Plug			
C.4977	Lead to No. 2 Sparking Plug			
C.4978	Lead to No. 3 Sparking Plug			
C.4979	Lead to No. 4 Sparking Plug			
C.4980	Lead to No. 5 Sparking Plug			
C.4981	Lead to No. 6 Sparking Plug			
C.4741	Lead to Ignition Coil			
C.8306	<b>TERMINAL FOR SPARKING PLUG LEADS (INCORPORATING SUPPRESSOR)</b>		6	
C.5479	<b>TERMINAL FOR SPARKING PLUG LEADS</b>		6	<b>FOR EXPORT ONLY.</b>
C.2451	<b>CONDUIT, ALONG CENTRE OF CYLINDER HEAD, ENCLOSING SPARKING PLUG LEADS</b>		1	

# CYLINDER HEAD

FOR XK 150 'S' MODELS ONLY

Part No.	Description	Plate No.	No. per Unit	Remarks
C.4983	<b>SPACER FOR SPARKING PLUG LEADS (THICK)</b>		2	
C.4984	<b>SPACER FOR SPARKING PLUG LEADS (THIN)</b>		3	
C.4982	<b>CLIP AROUND THICK SPACER</b>		1	



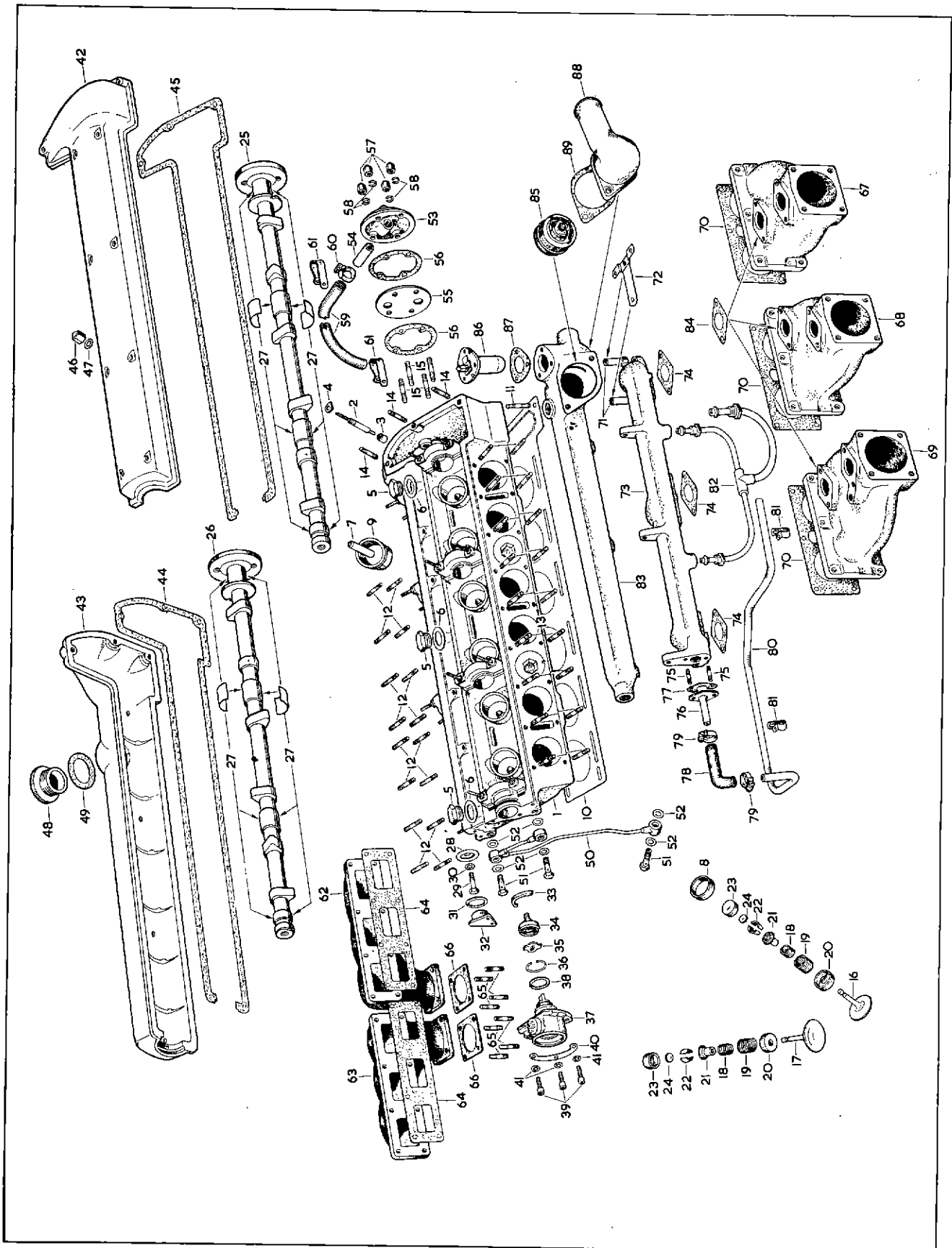


PLATE 6

# TIMING GEAR

Part No.	Description	Plate No.	No. per Unit	Remarks
C.2169	<b>SPROCKET FOR CAMSHAFTS</b>	7- 1	2	
C.2329	<b>Adjusting Plate</b> , inside Camshaft Sprockets	7- 2	2	} <b>SUPPLIED ONLY AS AN ASSEMBLY TO PART No. 1003.</b>
C.2191	<b>Clamping Plate</b> , on Adjusting Plates	7- 2	2	
C.2193	<b>Circlip</b> , retaining Adjusting Plates in Sprockets	7- 3	2	
C.2178	<b>Guide Pin</b> , through Adjusting Plates	7- 4	2	
C.2194	<b>Star Washer</b> , on Guide Pins, behind Adjusting Plates	7- 5	2	
C.2261	<b>Circlip</b> , retaining Guide Pins	7- 6	2	
C.2310	<b>Screw, Set</b> , securing Adjusting Plates and Sprockets to Camshafts		4	
C.4128/1	<b>FRONT MOUNTING BRACKET FOR TIMING GEAR</b>	7- 7	1	
C.4129	<b>REAR MOUNTING BRACKET FOR TIMING GEAR</b>	7- 8	1	
C.2182	<b>Stud</b> , for fixing of front and rear Mounting Brackets		4	
NN.125/L	<b>Nut</b> , securing Brackets on Studs		4	
C.724	<b>Washer</b> , Shakeproof, under Nuts		4	
C.7424	<b>Bolt (Long)</b> securing Mounting Bracket to Cylinder Block		4	
C.740	<b>Washer</b> , Shakeproof, on Bolts		4	
C.2166	<b>Bolt (Short)</b> securing rear Mounting Bracket and Intermediate Chain Damper to Cylinder Block		2	
C.16831	<b>Tab Washer</b> retaining Bolts		1	
C.2308	<b>IDLER SPROCKET (21 TEETH) BETWEEN MOUNTING BRACKETS</b>	7- 9	1	
C.2319	<b>Bush</b> , for Idler Sprocket		1	
C.2177	<b>ECCENTRIC SHAFT, THROUGH IDLER SPROCKET, FOR ADJUSTMENT OF UPPER TIMING CHAIN</b>	7-10	1	
C.2282	<b>Plug</b> , in end of Eccentric Shaft	7-11	1	
C.4404	<b>ADJUSTMENT PLATE, ON FACE OF FRONT MOUNTING BRACKET, FOR MICRO ADJUSTMENT OF UPPER TIMING CHAIN</b>	7-12	1	
C.3338/4	<b>Nut</b> , securing Adjustment Plate to Eccentric Shaft		1	
C.742	<b>Washer</b> , Shakeproof, under Nut		1	
C.4405	<b>Plunger Pin</b> , in front Mounting Bracket, holding Adjustment Plate in tension	7-13	1	
C.2297	<b>Spring</b> , behind Plunger Pin	7-14	1	

# TIMING GEAR

Part No.	Description	Plate No.	No. per Unit	Remarks
C.2309	<b>INTERMEDIATE SPROCKET (20 TEETH) AT BOTTOM OF UPPER TIMING CHAIN</b>	7-15	1	} <b>SUPERSEDED BY C.17154.</b>
C.2320	Bush for Sprocket		1	
C.2307	<b>INTERMEDIATE SPROCKET (28 TEETH) AT TOP OF LOWER TIMING CHAIN</b>	7-16	1	} <b>SUPERSEDED BY C.17154.</b>
C.926	Key, locking Intermediate Sprockets together	7-17	1	
C.17154	<b>INTERMEDIATE SPROCKET ASSEMBLY AT TOP OF LOWER TIMING CHAIN</b>		1	<b>SUPERSEDES C.2309 AND C.2307.</b>
C.2320	Bush for Sprocket		1	
C.2161	<b>SHAFT, HOLDING INTERMEDIATE SPROCKETS</b>	7-18	1	
C.2335	Circlip, retaining Shaft	7-19	1	
C.2256	<b>TOP TIMING CHAIN</b>	7-20	1	
C.6701	<b>DAMPER FOR UPPER TIMING CHAIN</b>		2	Fitted from Engine No. V.1001 to V.2028
C.13616	<b>L.H. DAMPER ASSEMBLY FOR UPPER TIMING CHAIN</b>	7-21	1	} Fitted to Engine No. V.2029 and subs. VS.1001 and subs. VA.1001 and subs. VAS.1001 and subs.
C.13617	<b>R.H. DAMPER ASSEMBLY FOR UPPER TIMING CHAIN</b>	7-22	1	
C.13660	Distance Piece for Upper Dampers	7-23	4	

# TIMING GEAR

Part No.	Description	Plate No.	No. per Unit	Remarks
C.13615	<b>INTERMEDIATE DAMPER ASSEMBLY FOR UPPER TIMING CHAIN</b>	7-24	1	Fitted to Engine No. V.2029 and subs. VS.1001 and subs. VA.1001 and subs. VAS.1001 and subs.
C.4127	<b>CARRIER FOR UPPER TIMING CHAIN DAMPERS</b>		2	} Fitted from Engine No. V.1001 to V.2028
C.4705	Rivet, securing Dampers to Carriers		4	
C.2255	<b>BOTTOM TIMING CHAIN</b>	7-25	1	
C.6819	<b>VIBRATION DAMPER FOR LOWER TIMING CHAIN</b>		1	Fitted from Engine No. V.1001 to V.2028
C.13614	<b>VIBRATION DAMPER FOR LOWER TIMING CHAIN</b>	7-26	1	} Fitted to Engine No. V.2029 and subs. VS.1001 and subs. VA.1001 and subs. VAS.1001 and subs.
NS.131/5D	Screw, Set, securing Damper to Cylinder Block		2	
C.7436	Tab Washer on Setscrews		1	
C.6818	<b>BRACKET, MOUNTING LOWER TIMING CHAIN DAMPER</b>		1	} Fitted from Engine No. V.1001 to V.2028
C.6820	Rivet, securing Vibration Damper to Bracket		3	
NS.131/5D	Screw, Set, securing Mounting Bracket to Cylinder Block		2	
C.725	Washer, Shakeproof, on Setscrews		2	
C.10292	<b>NYLON VIBRATION DAMPER FOR LOWER TIMING CHAIN</b>		1	} Fitted from Engine No. V.1001 to V.2028
C.10291	Bracket, mounting Nylon Damper		1	
C.6820	Rivet, securing Nylon Damper to Bracket		2	

# TIMING GEAR

Part No.	Description	Plate No.	No. per Unit	Remarks
C.10332	<b>HYDRAULIC CHAIN TENSIONER ASSEMBLY</b>	7-27	1	
6029	Tab Washer, securing Adjuster Plug		1	
C.9766 NB.125/11D	Shim, for adjustment of Hydraulic Chain Tensioner Bolt, securing Hydraulic Chain Tensioner to Cylinder Block	7-28	As req'd 2	
C.10333	Tab Washer, retaining Bolts		1	
6265	<b>REPAIR KIT FOR HYDRAULIC CHAIN TENSIONER (SD.1042)</b>  (Comprising Cylinder Barrel, Spring, Plug and Tab Washer)		1	
C.13457	<b>FILTER GAUZE, IN CYLINDER BLOCK, BEHIND HYDRAULIC CHAIN TENSIONER</b>	7-29	1	
C.8614/1	<b>FRONT TIMING COVER</b>	7-30	1	
C.8615	Gasket, between Timing Cover and Cylinder Block	7-31	2 halves	
C.8593	Oil Seal, between Timing Cover and Crankshaft	7-32	1	
C.2183	Stud, in Front Timing Cover, for fixing of Cylinder Head		2	
C.2184	Stud, in Front Timing Cover, for fixing of Water Pump		3	
C.2185	Stud, in Front Timing Cover, for fixing of Oil Sump		4	
NN.131/L	Nut, on Studs		9	
FG.105/X	Washer, Spring, under Nuts		9	
NB.131/9D	Bolt, securing Timing Cover to Cylinder Block		1	
NB.131/14D	Bolt, securing Timing Cover to Cylinder Block		1	
NB.131/16D	Bolt, securing Timing Cover and Dynamo Adjusting Link to Cylinder Block		1	
NB.131/21D	Bolt, securing Timing Cover and Water Pump to Cylinder Block		4	
NB.131/26D	Bolt, securing Timing Cover and Water Pump to Cylinder Block		2	
FG.105/X	Washer, Spring, on Bolts		9	
NB.137/11D	Bolt, securing Timing Cover to Cylinder Block		5	
FG.106/X	Washer, Spring, on Bolts		5	
C.2286	<b>DYNAMO ADJUSTING LINK</b>		1	} Fitted from Engine No. V.1001 to V.5732
C.2155	Distance Piece behind Adjusting Link		1	
C.13838	<b>DYNAMO ADJUSTING LINK</b>		1	} Fitted to Engine No. V.5733 and subs. VS.1001 and subs. VA.1001 and subs. VAS.1001 and subs.
C.2155	Distance Piece behind Adjusting Link		1	
FW.105/T	Washer, Plain, for Adjusting Link		1	

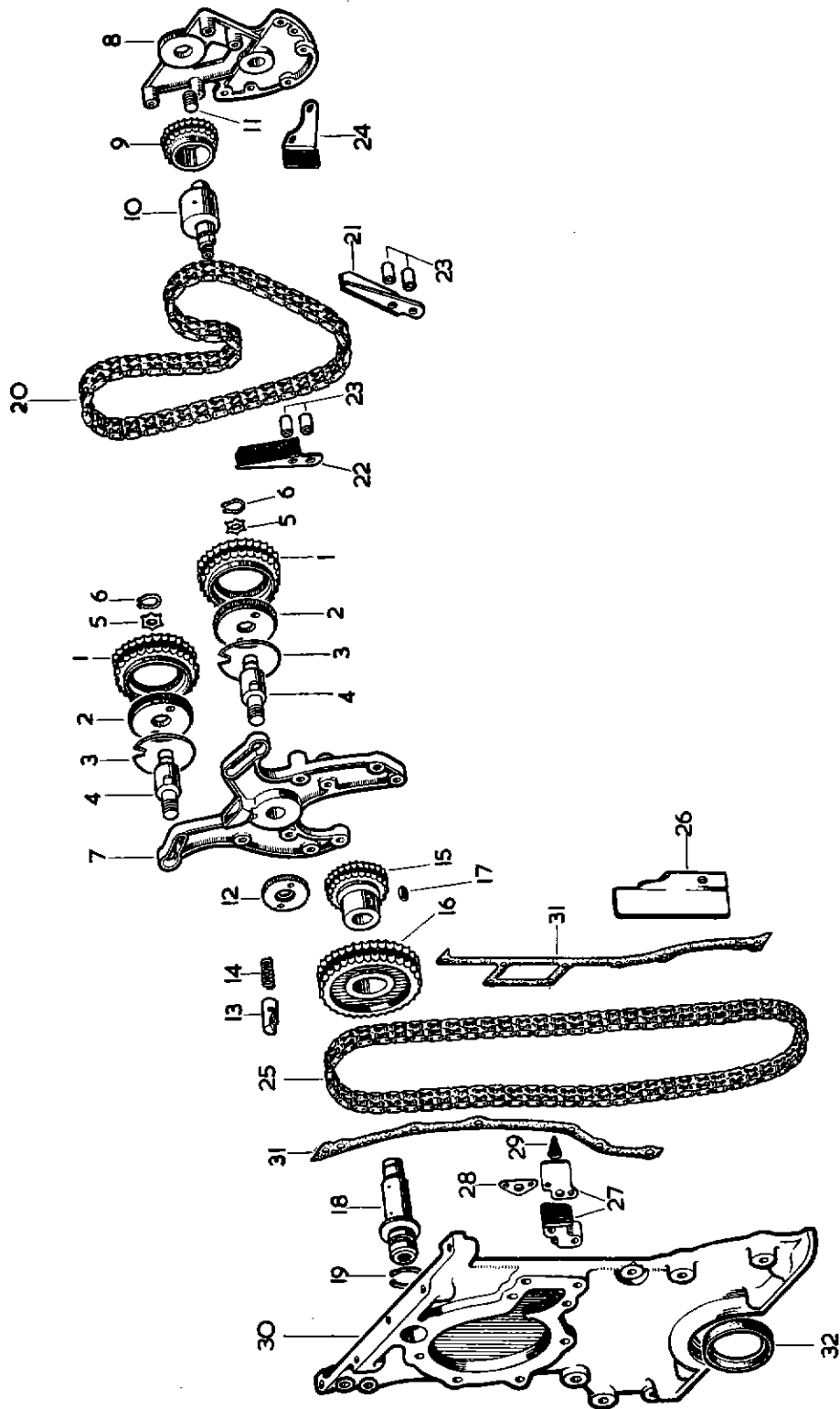


PLATE 7