

PROPELLER SHAFT

Part No.	Description	Plate No.	No. per Unit	Remarks
C.7522	PROPELLER SHAFT COMPLETE		1	NOT REQUIRED WHEN OVERDRIVE UNIT IS FITTED.
K.2-2-239	Flange Yoke	T.1	2	
K.2-3-68	Sleeve Yoke	T.2	1	
K.2-5-GB.108	Journal Assembly	T.3	2	
K.2-6-38	Bearing, Needle, Assembly	T.4	8	
K.2-7-GB.19	Ring, Snap	T.5	8	
94/GB.1598	Nipple, Grease, on Journal	T.6	2	
3-14-39	Cap, Dust	T.7	1	
3-15-33	Washer (Steel) in Dust Cap	T.8	1	
K.3-16-43	Washer (Cork) in Dust Cap	T.9	1	
K.2-62-216	Shaft, Tubular, Assembly	T.10	1	
GB.312-3503				
C.8259	PROPELLER SHAFT COMPLETE		1	REQUIRED ONLY WHEN OVERDRIVE UNIT IS FITTED.
K.2-62-216- GB.312-2305	Shaft, Tubular, Assembly		1	
	All other items as for Propeller Shaft C.7522.			
C.3308	Bolt, securing Propeller Shaft to Rear Axle and Gearbox	T.11	8	
NN.737/L	Nut, on Bolts	T.12	8	
C.787	Washer, on Bolts	T.13	16	
L.102.5/8U	Pin, Split, securing Nuts	T.14	8	
C.3044/1	Nipple, Grease, on Sleeve Yoke (Tec. NA.6656)	T.15	1	
K.5/L.4	Unit Package (comprising Journal Assembly, Needle Bearings and Snap Rings)	T.16	2	

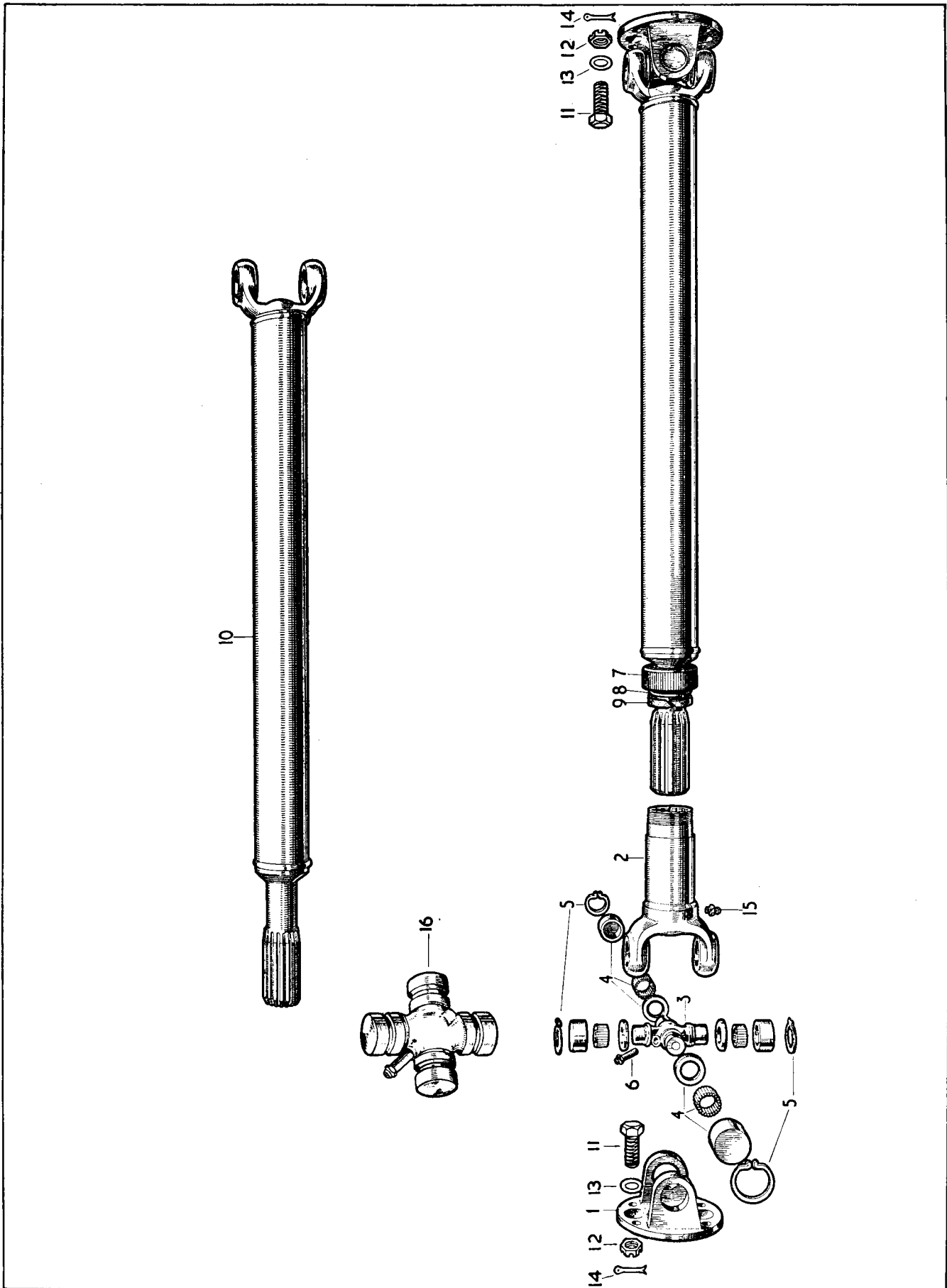


PLATE T

REAR AXLE

Part No.	Description	Plate No.	No. per Unit	Remarks
C.7865	REAR AXLE COMPLETE (SALISBURY 4HA-001/10B) (RATIO 3.54 : 1)		1	STANDARD RATIO.
C.7864	REAR AXLE COMPLETE (SALISBURY 4HA-001/10) (RATIO 3.31 : 1)		1	ALTERNATIVE RATIO.
C.7868	REAR AXLE COMPLETE (SALISBURY 4HA-001/10) (RATIO 4.27 : 1)		1	ALTERNATIVE RATIO.
C.7867	REAR AXLE COMPLETE (SALISBURY 4HA-001/10D) (RATIO 4.09 : 1)		1	REQUIRED WHEN OVERDRIVE UNIT IS FITTED.
4HA-101/6	Carrier and Tube Assembly	U.1	1	
8-73-3136	Screw, Set, securing Differential Bearing Caps	U.2	4	
8-75-GB.39	Lock Washer on Setscrews	U.3	4	
4HA-010	Cover for Carrier	U.4	1	
HA-059	Plug for Filler and Drain apertures	U.5	2	
4HA-026	Gasket for Cover	U.6	1	
5A-73-110	Screw, Set, securing Cover to Carrier	U.7	10	
5-79-15	Lock Washer for Cover Screws	U.8	10	
4HA-082	Case, Differential, Assembly		1	FOR USE ONLY WITH 3.31 AND 3.54 RATIOS.
4HA-082/1	Case, Differential, Assembly		1	FOR USE WITH 4.09 AND 4.27 RATIOS.
2HA-024	Bearing, Roller, on Differential Case (Timken 25577-25523)	U.9	2	
4HA-046	Shim, adjusting Differential (.003" thick)	U.10	2	} USE SHIM OF DESIRED THICKNESS.
4HA-047	Shim, adjusting Differential (.005" thick)	U.10	2	
4HA-048	Shim, adjusting Differential (.010" thick)	U.10	2	
4HA-049	Shim, adjusting Differential (.030" thick)	U.10	2	
4HA-105/9	Crown Wheel and Pinion (Ratio 3.54 : 1)	U.11	1	STANDARD RATIO.
4HA-105/8	Crown Wheel and Pinion (Ratio 3.31 : 1)	U.11	1	ALTERNATIVE RATIO.
4HA-105/12	Crown Wheel and Pinion (Ratio 4.27 : 1)	U.11	1	ALTERNATIVE RATIO.
4HA-105/13	Crown Wheel and Pinion (Ratio 4.09 : 1)	U.11	1	REQUIRED WHEN OVERDRIVE IS FITTED.
3HA-075/4M	Screw, Set, securing Crown Wheel to Differential Case	U.12	10	
4HA-074	Lock Strap for Crown Wheel Setscrews		5	Fitted from Chassis No. 800001 to 800021. 810001 to 811092. 807001 to 807046. 817001 to 817267. 804001 to 804030. 814001 to 814052.
4HA-074/1	Lock Strap for Crown Wheel Setscrews	U.13	5	Fitted to Chassis No. 800022 and subs. 811093 and subs. 807047 and subs. 817268 and subs. 804031 and subs. 814053 and subs.
2HA-023	Bearing, Roller, at inner end of Pinion (Timken 31593-31520)	U.14	1	
2HA-043	Shim, Inner, adjusting Pinion (.003" thick)	U.15	2	} USE SHIM OF DESIRED THICKNESS.
2HA-044	Shim, Inner, adjusting Pinion (.005" thick)	U.15	2	
2HA-045	Shim, Inner, adjusting Pinion (.010" thick)	U.15	2	
2HA-039	Shim, Outer, adjusting Pinion (.003" thick)	U.16	2	
2HA-040	Shim, Outer, adjusting Pinion (.005" thick)	U.16	2	
2HA-041	Shim, Outer, adjusting Pinion (.010" thick)	U.16	2	
2HA-042	Shim, Outer, adjusting Pinion (.030" thick)	U.16	2	
2HA-022	Bearing, Roller, at outer end of Pinion (Timken 02872-02820)	U.17	1	

REAR AXLE

Part No.	Description	Plate No.	No. per Unit	Remarks
REAR AXLE COMPLETE (continued)				
4HA-036	Slinger, Oil, on Pinion	U.18	1	
2HA-019	Seal, Oil, on Pinion	U.19	1	
2HA-020	Gasket for Pinion Oil Seal	U.20	1	
2HA-083	Flange, Companion, Assembly	U.21	1	
12LN-NF.9	Nut, securing Flange to Pinion	U.22	1	
12-75-GB.29	Washer, under Nut	U.23	1	
4HA-005	Shaft		2	
DIFFERENTIAL CASE ASSEMBLY				
4HA-082			1	FOR USE ONLY WITH 3.31 : 1 AND 3.54 : 1 RATIOS.
4HA-006	Case, Differential	U.24	1	
4HA-007	Gear, Side, for Differential	U.25	2	
2HA-038	Washer, Thrust, for Side Gears	U.26	2	
2HA-008/1	Gear, Differential Pinion Mate	U.27	2	
2HA-037	Washer, Thrust, for Pinion Mate Gears	U.28	2	
2HA-012	Shaft for Pinion Mate Gears	U.29	1	
4HA-033	Spacer on Shaft	U.30	1	
2HA-013	Pin, locking Pinion Mate Assembly in Differential Case	U.31	1	
DIFFERENTIAL CASE ASSEMBLY				
4HA-082/1			1	FOR USE ONLY WITH 4.09 : 1 AND 4.27 : 1 RATIOS.
4HA-006/1	Case, Differential	U.24	1	
	All other items as for Differential Case Assembly 4HA-082.			
PINION COMPANION FLANGE ASSEMBLY				
2HA-083		U.21	1	
2HA-021	Shield, Dust, for Companion Flange		1	
REAR AXLE SHAFT				
4HA-005		U.32	2	
C.7356	Key, securing Hubs to Axle Shafts (2HA-029)	U.33	2	
2HA-027	Seal, Oil, in end of Carrier Tubes, for Axle Shafts	U.34	2	
2HA-025	Bearing, Roller, for Hubs (Timken 25877-25821)	U.35	2	
16-74-71	Nut, Slotted, on Axle Shafts	U.36	2	
C.1479	Washer, under Slotted Nuts (16-75-GB.39)	U.37	2	
L.104/14U	Pin, Split, securing Nuts	U.38	2	

REAR AXLE

Part No.	Description	Plate No.	No. per Unit	Remarks
C.7826/1	R.H. REAR BRAKE ASSEMBLY (LOCK-HEED 39378)		1	
C.7827/1	L.H. REAR BRAKE ASSEMBLY (LOCK-HEED 39379)		1	
2HA-050	Shim, adjusting Hub Bearing (.003" thick)	U.39	2	} USE SHIM OF DESIRED THICKNESS.
2HA-051	Shim, adjusting Hub Bearing (.005" thick)	U.39	2	
2HA-052	Shim, adjusting Hub Bearing (.010" thick)	U.39	2	
2HA-053	Shim, adjusting Hub Bearing (.030" thick)	U.39	2	
4HA-035	Plate, between Flange of Axle and Backplate	U.40	2	
C.1483	Gasket, between Backplate and Oil Seal Containers (2HA-031)	U.41	2	
C.1481	Seal, Oil, on Backplates (2HA-032)	U.42	2	
C.1480	Container for Oil Seals (2HA-030)	U.43	2	
6-73-2119	Screw, Set, securing Backplate to Carrier	U.44	10	
6-74-11	Nut on Setscrews	U.45	10	
6-75-GB.49	Washer, locking Nuts	U.46	10	
C.5064	*REAR AXLE HUB	U.47	2	
C.3040	* Stud, in Hubs, for fixing of Brake Drums and Road Wheels		10	
C.7228	*BRAKE DRUM	U.48	2	
C.3078	*Screw, Set, locating Brake Drums on Hubs	U.49	4	
C.970/1	Nipple, Grease, on Axle Hubs (Tec. NA.6673)	U.51	2	
NOTE: ITEMS MARKED * ARE FOR USE WITH DISC TYPE ROAD WHEELS ONLY.				
ITEMS BELOW MARKED † ARE REQUIRED WHEN WIRE SPOKE ROAD WHEELS ARE FITTED.				
C.6022	†REAR AXLE HUB, R.H.	U.52	1	
C.6023	†REAR AXLE HUB, L.H.		1	
C.6277	† Stud, in Hubs, for fixing of Brake Drums		10	
NN.143/L	†Nut, securing Brake Drums to Hubs	U.53	10	
C.1096/1	†Washer, Spring, under Nuts	U.54	10	

REAR AXLE

Part No.	Description	Plate No.	No. per Unit	Remarks
C.6025	†BRAKE DRUM FOR REAR AXLE	U.55	2	
C.1102	†R.H. HUB CAP, SECURING ROAD WHEEL TO HUB	U.56	1	
C.1103	†L.H. HUB CAP, SECURING ROAD WHEEL TO HUB		1	

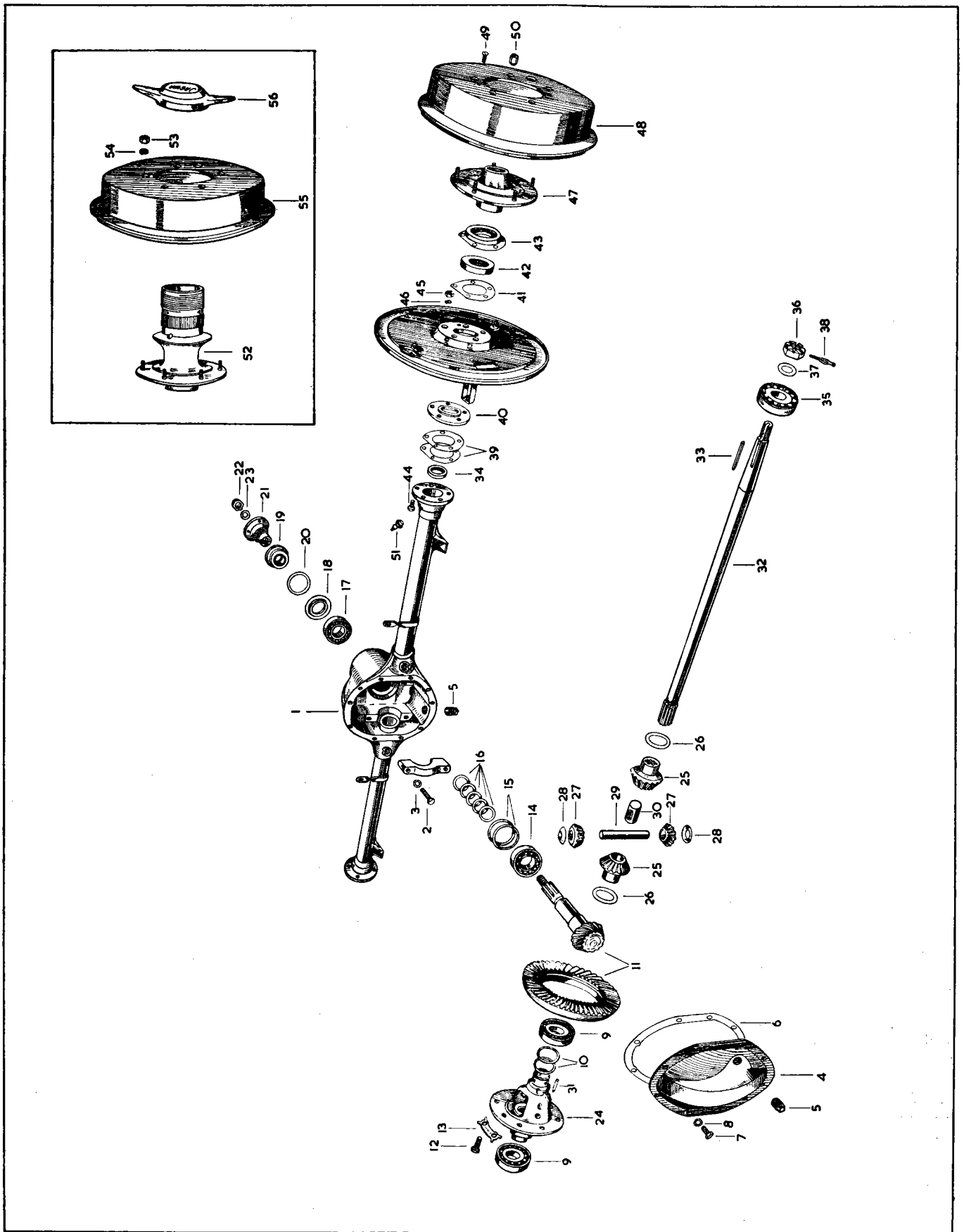


PLATE U