

GEARBOX ("S.H." SERIES)

Part No.	Description.	Plate No.	No. per Unit.	Remarks.
C.2549/1	GEARBOX ASSEMBLY		1	SERIAL No. S.H.10 AND SUBS.
C.2071	Casing only	G.1	1	
C.799	Plug, Drain, at bottom of Casing	G.2A	1	
C.785	Washer (Fibre) on Drain Plug	G.2B	1	
C.857	Plate, on Casing, Locking Counter and Reverse Shafts	G.3	1	
FS.205/7D	Screw, Set, securing Locking Plate	G.4	1	
FG.105/X	Washer, Spring, on Setscrew	G.5	1	
C.883	Bearing, Roller, for Mainshaft (Hoff R.M.S. 12 $\frac{1}{2}$ L)	G.6A	1	
C.1838	Bearing, Ball, for Constant Pinion Shaft (Hoff. 340K)	G.8	1	
C.1841	Collar between Casting and Circlip	G.9	1	
C.1840	Circlip, on Ball Bearing, behind Collar	G.10	1	
C.920	Washer (Fibre) in Casing, at front end of Counter-shaft	G.11	1	
C.1833	FRONT END COVER	G.12	1	
C.1834	Washer, Jointing, between Front Cover and Casing	G.13	1	
C.912	Seal, Oil	G.14	1	ALTERNATIVE TO C.6738
C.6738	Seal, Oil		1	ALTERNATIVE TO C.912
C.1835	Screw, Set, securing Cover to Casing	G.15	1	
FW.105/T	Washer, Plain, on Setscrews	G.16	4	
C.837	Wire, Locking Setscrews (approx. 9" lengths)		As req'd.	
C.2548	GEARBOX EXTENSION	G.17	1	
C.1866	Washer, Jointing, between Extension and Casing	G.18	1	
FS.105/9D	Screw, Set, securing Extension to Casing	G.19	7	
FG.105/X	Washer, Spring, on Setscrews	G.20	7	
C.924	Bearing, Ball (Hoff. M.S.12)	G.21	1	
C.921	Washer (Felt) in Extension, at rear end of Counter-shaft	G.22	1	
C.886	REAR END COVER	G.23	1	
C.862	Washer, Jointing, between Rear End Cover and Extension	G.24	1	
C.859	Seal, Oil	G.25	1	
C.863	Bolt, securing Cover to Extension	G.26	4	
FG.105/X	Washer, Spring, on Bolts	G.27	4	
FS.305/5H	Screw, Set, in aperture for Speedo Driven Gear, securing Cover to Extension	G.28	1	
C.843	Gear, Speedometer Driven	G.29	1	
C.858	Bearing for Speedometer Driven Gear	G.30	1	
C.846	Screw, Locking Bearing in Cover	G.31	1	
FG.105/X	Washer, Spring, on Locking Screw	G.32	1	
STRIKING GEAR				
C.907	Rod, Striking (1st/2nd Gears)	G.33	1	
C.877	Rod, Striking (3rd/Top Gears)	G.34	1	
C.878	Rod, Striking (Reverse Gear)	G.35	1	
C.904	Fork, Change-Speed (1st/2nd Gears)	G.36	1	
C.872	Fork, Change-Speed (3rd/Top Gears)	G.37	1	
C.913	Fork, Change-Speed (Reverse Gear)	G.38	1	
C.905	Selector (3rd/Top)	G.39	1	
C.1910	Selector (Reverse)	G.40	1	
C.1909	Plunger in Reverse Selector	G.41	1	
C.2022	Spring on Plunger	G.42	1	
L.103/7U	Pin, Split, securing Plunger in Reverse Selector	G.43	1	
C.922	Ball, locking Plunger	G.44	1	
C.900	Spring under Ball	G.45	1	
C.914	Shim, under Spring		1	

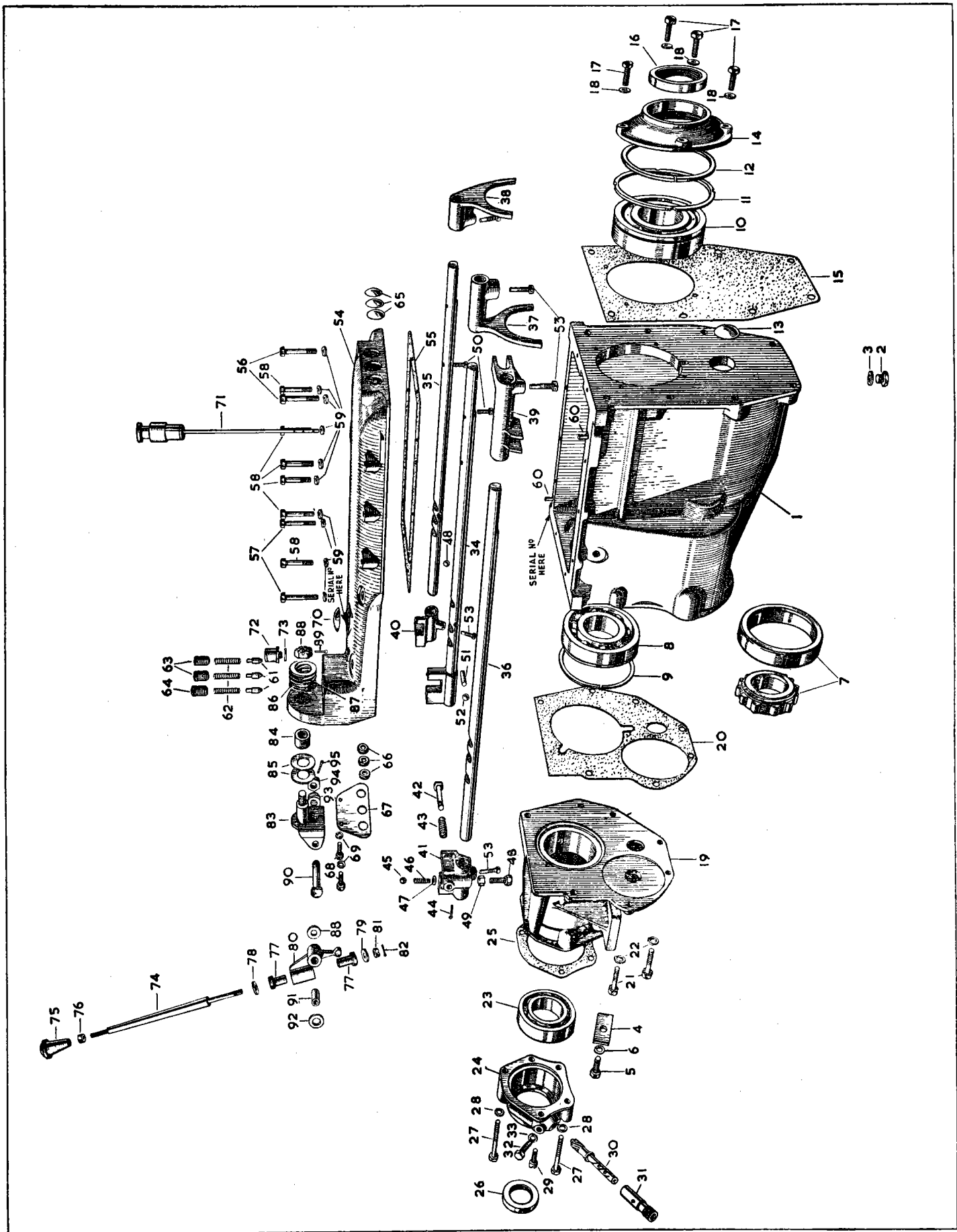
GEARBOX ("S.H." SERIES)

Fart No.	Description.	Plate No.	No. per Unit.	Remarks.
STRIKING GEAR (continued)				
AS.102/4D	Screw, Set, in Reverse Selector adjusting tension on Spring		1	
AN.102/L	Nut, locking Setscrew in position		1	
C.882	Pin, Stop, on 1st/2nd and 3rd/Top Striking Rods	G.46	2	
C.874	Roller for Interlock (in 1st/2nd Striking Rod)	G.47	1	
C.923	Balls for Interlock (in 3rd/Top and Reverse Striking Rods)	G.48	2	
C.844	Screw, Set (Taper) securing Forks and Selectors	G.49	5	
C.837	Wire, locking Taper Screws and Stop Pins		As req'd.	
TOP COVER				
C.1927		G.50	1	
C.860	Washer, Jointing, between Cover and Casing	G.51	1	
FB.105/15D	Bolt, securing Cover	G.52	2	
FB.105/14D	Bolt, securing Cover	G.53	2	
FB.105/12D	Bolt, securing Cover	G.54	6	
FG.105/X	Washer, Spring, on Bolts	G.55	10	
OD.105/6H	Dowel, in Casing, positioning Top Cover	G.56	2	
C.848	Plunger engaging Striking Rods	G.57	3	
C.845	Spring, top of Plungers	G.58	3	
C.849	Screw, Grub, applying tension to Plungers for 1st/2nd and 3rd/Top Striking Rods	G.59	2	
C.884	Screw, Grub, applying tension to Plunger for Reverse Striking Rod	G.60	1	
C.837	Wire, locking Grub Screws		As req'd.	
C.873	Plug in front end of Cover	G.61	3	
C.929	Washer (Felt) in rear end of Cover	G.62	3	
C.880	Plate, covering Felt Washers	G.63	1	
FS.104/3D	Screw, Set, securing Cover Plate	G.64	2	
FG.104/X	Washer, Spring, on Setscrews	G.65	2	
C.315	Plug, Core, on top of Cover	G.66	1	
C.2675	Dipstick	G.67	1	
C.841	Plug, Breather, on top of Cover	G.68	1	
C.930	Washer (Fibre) on Breather Plug	G.69	1	
C.927	Screw, Grub, in side of Cover, for insertion of Interlock Balls and Roller		1	
CHANGE-SPEED LEVER				
C.2462		G.70	1	
C.2291	Knob on Lever	G.71	1	
C.1928	Nut, locking Knob to Lever	G.72	1	
C.1915	Bearing, Flexible, housing Change-Speed Lever in Selector Lever	G.73	2 halves.	
C.1919	Washer, at top of Flexible Bearing	G.74	1	
C.1904	Washer at bottom of Flexible Bearing	G.75	1	
C.1918	Lever, Selector, housing Change-Speed Lever	G.76	1	
FN.405/L	Nut, Slotted, securing Change-Speed Lever in Selector Lever	G.77	1	
L.103/8U	Pin, Split, securing Slotted Nut	G.78	1	
C.1913	Jaw, Pivot, for Selector Lever	G.79	1	
C.1907	Bush for Pivot Jaw	G.80	1	
C.1894	Washer, Thrust, on Pivot Jaw	G.81	2	
C.1914	Washer, Locking, on Pivot Jaw	G.82	1	
C.1905	Washer, Spring, on Pivot Jaw	G.83	1	
FN.407/L	Nut, Slotted, securing Pivot Jaw	G.84	1	
L.103/8U	Pin, Split, securing Slotted Nut	G.85	1	
C.1912	Pin, Pivot, mounting Selector Lever in Pivot Jaw	G.86	1	
C.1906	Bush, in Selector Lever, for Pivot Jaw	G.87	1	
C.1908	Washer, Thrust, at each side of Selector Lever	G.88	2	
C.1929	Washer, Spring, between Thrust Washer and Pivot Jaw	G.89	1	
FN.407/L	Nut, Slotted, securing Pivot Pin	G.90	1	
L.103/8U	Pin, Split, securing Slotted Nut	G.91	1	
FLANGE ON MAINSHAFT				
C.885		H.1	1	
C.840	Nut, Slotted, securing Flange	H.2	1	
C.925	Washer, Plain, under Slotted Nut	H.3	1	
L.104/12U	Pin, Split, securing Slotted Nut	H.4	1	

GEARBOX ("S.H." SERIES)

Part No.	Description.	Plate No.	No. per Unit.	Remarks.
C.1844	MAINSHAFT	H.5	1	
C.910	Gear, Speedometer Driving	H.6	1	
C.909	Piece, Distance, behind Speedometer Gear	H.7	1	
C.1854	Sleeve, Distance, on Mainshaft	H.8	1	
C.1853	Sleeve, Synchronising, 2nd Speed	H.9	1	
C.900	Spring in 2nd and 3rd/Top Speeds Synchro Sleeves	H.10	12	
C.922	Ball in 2nd and 3rd/Top Speeds Synchro Sleeves	H.11	13	
C.901	Plunger in 2nd Speed Synchro Sleeve	H.12	1	
C.1897	Wheel, Gear, 1st Speed	H.13	1	
C.1852	Wheel, Gear, 2nd Speed	H.14	1	
C.1851	Wheel, Gear, 3rd Speed	H.15	1	
C.1850	Roller, Needle, in 2nd and 3rd Speed Gear Wheels	H.16	82	
C.1849	Plunger, in Mainshaft, locking 2nd and 3rd Speed Gear Wheels	H.17	2	
C.1324	Spring under Plungers	H.18	2	
C.1847	Washer, Thrust, front and rear of 2nd and 3rd Speed Gear Wheels	H.19	2	
C.1846	Sleeve, Synchronising, 3rd/Top Speeds	H.20	1	
C.2568	Sleeve, Operating, 3rd/Top Speeds	H.21	1	
C.903	Shim for Synchro Sleeve (.006" thick)			As req'd.
C.914	Shim for Synchro Sleeve (.028" thick)			As req'd.
C.2112	CONSTANT PINION SHAFT	H.22	1	
C.1843	Bearing Roller, inside shaft	H.23	1	
C.1836	Pinion, Constant	H.24	1	
C.1842	Thrower, Oil	H.25	1	
C.1838/1	Circlip, behind Shims on Shaft (Seeger 40 mm. Ext.)	H.26	1	
C.2109	Washer, Packing, between Ball Bearing and Shims	H.26A	1	
C.2110	Shim, .003" thick, between Packing Washer and Circlip	H.26B		As req'd.
C.2111	Shim, .005" thick, between Packing Washer and Circlip	H.26C		As req'd.
C.2070	REVERSE SPINDLE	H.27	1	
C.2068/1	Gear, Reverse (complete with Bush)	H.28	1	Fitted from Gearbox No. S.H.10 to S.H.6700. Fitted to Gearbox SH.6701 and Subs.
C.2069	Bush in Reverse Gear	H.29	1	
C.2068/2	Gear, Reverse (complete with Bush)		1	
C.3383	Bush in Reverse Gear		2	
C.1893	Lever operating Reverse Gear	H.30	1	
C.1899	Pin, Fulcrum, for Operating Lever	H.31	1	
C.777	Nut, Slotted, securing Fulcrum Pin	H.32	1	
FW.106/T	Washer, Plain, under Slotted Nut	H.33	1	
L.103/8U	Pin, Split, securing Fulcrum Pin and Reverse Slipper	H.34	2	
C.866	Slipper, Reverse	H.35	1	
C.1856	COUNTERSHAFT	H.36	1	
C.1857	Gear-Unit (Cluster)	H.37	1	
C.918	Roller, Needle, inside Gear-Unit	H.38	58	
C.1864	Ring, retaining Needle Rollers	H.39	3	
C.1858	Washer, Thrust, Inner, at front of Countershaft	H.40	1	
C.1859	Washer, Thrust, Outer, at front of Countershaft	H.41	1	
C.1861	Washer, Thrust, Inner at rear of Countershaft	H.42	1	
C.1862	Washer, Thrust, Outer, at rear of Countershaft. (.156" thick)	H.43		As req'd.
C.1862/1	Washer, Thrust, Outer, at rear of Countershaft. (.159" thick)	H.43		As req'd.
C.1862/2	Washer, Thrust, Outer, at rear of Countershaft. (.162" thick)	H.43		As req'd.
C.1862/3	Washer, Thrust, Outer, at rear of Countershaft. (.152" thick)	H.43		As req'd.
C.1862/4	Washer, Thrust, Outer, at rear of Countershaft. (.164" thick)	H.43		As req'd.

To eliminate end float on the Countershaft, select the Washer which has the desired thickness.



3-2

PLATE G.

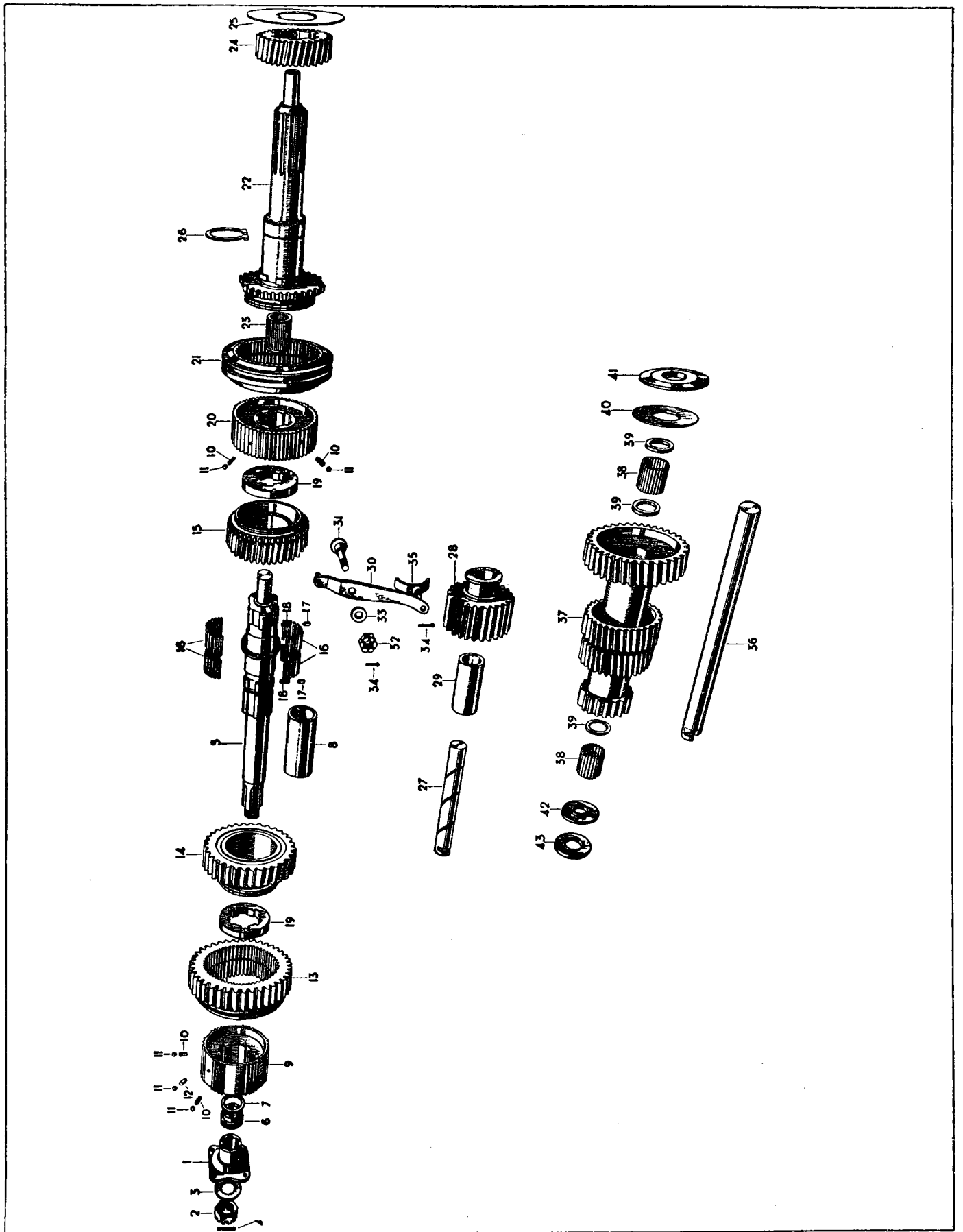


PLATE H.

GEARBOX ("J.H." SERIES)

Part No.	Description.	Plate No.	No. per Unit.	Remarks.
C.2036/1	GEARBOX ASSEMBLY		1	SERIAL No. JH.10 TO JH.2764 fitted from Chassis No. 660001 to 660934 669001 and 669002 670001 to 671796 679001 to 679214
C.2071	Casing only	G.1	1	
C.799	Plug, Drain, at bottom of Casing	G.2A	1	
C.785	Washer (Fibre) on Drain Plug	G.2B	1	
C.857	Plate, Locking Counter and Reverse Shafts	G.3	1	
FS.205/7D	Screw, Set, securing Locking Plate	G.4	1	
FG.105/X	Washer, Spring, on Setscrew	G.5	1	
C.883	Bearing, Roller, for Mainshaft (Hoff: R.M.S. 12½L)	G.6A	1	
C.1838	Bearing, Ball, for Constant Pinion Shaft (Hoff: 340K.)	G.8	1	
C.1841	Collar between Casing and Circlip	G.9	1	
C.1840	Circlip, on Ball Bearing, behind Collar	G.10	1	
C.920	Washer (Fibre) in Casing, at front end of Counter-shaft	G.11	1	
C.1833	FRONT END COVER	G.12	1	
C.1834	Washer, Jointing, between Front Cover and Casing	G.13	1	
C.912	Seal, Oil	G.14	1	
C.359	Screw, Set, securing Cover to Casing	G.15	4	
FW.105/E	Washer, Plain, on Setscrews	G.16	4	
C.837	Wire, locking Setscrews (approx. 9" lengths)			As req'd.
C.2548	GEARBOX EXTENSION	G.17	1	
C.1866	Washer, Jointing, between Extension and Casing	G.18	1	
FS.105/9D	Screw, Set, securing Extension to Casing	G.19	7	
FG.105/X	Washer, Spring, on Setscrews	G.20	7	
C.924	Bearing, Ball (Hoff:MS.12)	G.21	1	
C.921	Washer (Felt) in Extension, at rear end of Counter-shaft	G.22	1	
C.886	REAR END COVER	G.23	1	
C.862	Washer, Jointing, between Rear End Cover and Extension	G.24	1	
C.859	Seal, Oil	G.25	1	
C.863	Bolt, securing Cover to Extension	G.26	4	
FG.105/X	Washer, Spring, on Bolts	G.27	4	
FS.305/5H	Screw, Set, in aperture for Speedo Driven Gear, securing Cover to Extension	G.28	1	
C.843	Gear, Speedometer Driven	G.29	1	
C.858	Bearing for Speedometer Driven Gear	G.30	1	
C.846	Screw, locking Bearing in Cover	G.31	1	
FG.105/X	Washer, Spring, on Locking Screw	G.32	1	
	STRIKING GEAR			
C.907	Rod, Striking (1st/2nd Gears)	G.33	1	
C.877	Rod, Striking (3rd/Top Gears)	G.34	1	
C.878	Rod, Striking (Reverse Gear)	G.35	1	
C.904	Fork, Change-Speed (1st/2nd Gears)	G.36	1	
C.872	Fork, Change-Speed (3rd/Top Gears)	G.37	1	
C.913	Fork, Change-Speed (Reverse)	G.38	1	
C.905	Selector (3rd/Top)	G.39	1	
C.1910	Selector (Reverse)	G.40	1	
C.1909	Plunger in Reverse Selector	G.41	1	
C.2022	Spring on Plunger	G.42	1	
C.914	Shim under Spring		1	
AS.102/4D	Screw, Set, in Reverse Selector, adjusting tension on Spring		1	
AN.102/L	Nut, locking Setscrew in position		1	
L.103/7U	Pin, Split, securing Plunger in Reverse Selector	G.43	1	
C.922	Ball, locking Plunger	G.44	1	

GEARBOX ("J.H." SERIES)

Part No.	Description.	Plate No.	No. per Unit.	Remarks.
STRIKING GEAR (continued)				
C.900	Spring under Ball	G.45	1	
C.882	Pin, Stop, on 1st/2nd and 3rd/Top Striking Rods	G.46	2	
C.874	Roller for Interlock (in 1st/2nd Striking Rod)	G.47	1	
C.923	Balls for Interlock (in 3rd/Top and Reverse Striking Rods)	G.48	2	
C.844	Screw, Set (Taper) securing Forks and Selectors	G.49	5	
C.837	Wire, locking Taper Screws and Stop Pins		As req'd.	
TOP COVER				
C.1927		G.50	1	
C.860	Washer, Jointing, between Cover and Casing	G.51	1	
FB.105/15D	Bolt, securing Cover	G.52	2	
FB.105/14D	Bolt, securing Cover	G.53	2	
FB.105/12D	Bolt, securing Cover	G.54	6	
FG.105/X	Washer, Spring, on Bolts	G.55	10	
OD.105/6H	Dowel, in Casing, positioning Top Cover	G.56	2	
C.848	Plunger, engaging Striking Rods	G.57	3	
C.845	Spring, top of Plungers	G.58	3	
C.849	Screw, Grub, applying Tension to Plungers for 1st/2nd and 3rd/Top Striking Rods	G.59	2	
C.884	Screw, Grub, applying tension to Plunger for Reverse Striking Rod	G.60	1	
C.837	Wire locking Grub Screw		As req'd.	
C.873	Plug in front end of Cover	G.61	3	
C.929	Washer (Felt) in rear end of Cover	G.62	3	
C.880	Plate, covering Felt Washers	G.63	1	
FS.104/3D	Screw, Set, securing Cover Plate	G.64	2	
FG.104/X	Washer, Spring, on Setscrews	G.65	2	
C.315	Plug, Core, on top of Cover	G.66	1	
C.2675	Dipstick	G.67	1	
C.841	Plug, Breather, on top of Cover	G.68	1	
C.930	Washer (Fibre) on Breather Plug	G.69	1	
C.927	Screw, Grub, in side of Cover, for insertion of Interlock Balls and Roller		1	
C.2462	CHANGE-SPEED LEVER	G.70	1	
C.4054	CHANGE-SPEED LEVER		1	REQUIRED ONLY WHEN RADIO IS FITTED.
C.2291	Knob on Lever	G.71	1	
C.1928	Nut, locking Knob to Lever	G.72	1	
C.1915	Bearing, Flexible, housing Change-Speed Lever in Selector Lever	G.73	2 halves.	
C.1919	Washer at top of Flexible Bearing	G.74	1	
C.1904	Washer at bottom of Flexible Bearing	G.75	1	
C.1918	Lever, Selector, housing Change-Speed Lever	G.76	1	
FN.405/L	Nut, Slotted, securing Change-Speed Lever in Selector Lever	G.77	1	
L.103/8U	Pin, Split, securing Slotted Nut	G.78	1	
C.1913	Jaw, Pivot, for Selector Lever	G.79	1	
C.1907	Bush for Pivot Jaw	G.80	1	
C.1894	Washer, Thrust, on Pivot Jaw	G.81	2	
C.1914	Washer, Locking, on Pivot Jaw	G.82	1	
C.1905	Washer, Spring, on Pivot Jaw	G.83	1	
FN.407/L	Nut, Slotted, securing Pivot Jaw	G.84	1	
L.103/8U	Pin, Split, securing Slotted Nut	G.85	1	
C.1912	Pin, Pivot, mounting Selector Lever in Pivot Jaw	G.86	1	
C.1906	Bush, in Selector Lever, for Pivot Jaw	G.87	1	
C.1908	Washer, Thrust, at each side of Selector Lever	G.88	2	
C.1929	Washer, Spring, between Thrust Washer and Pivot Jaw	G.89	1	
FN.407/L	Nut, Slotted, securing Pivot Pin	G.90	1	
L.103/8U	Pin, Split, securing Slotted Nut	G.91	1	
C.885	FLANGE ON MAINSHAFT	J.1	1	
C.840	Nut, Slotted, securing Flange	J.2	1	
C.925	Washer, Plain, under Slotted Nut	J.3	1	
L.104/12U	Pin, Split, securing Slotted Nut	J.4	1	

GEARBOX ("J.H." SERIES)

Part No.	Description.	Plate No.	No. per Unit.	Remarks.
C.2677	MAINSHAFT	J.5	1	
C.910	Gear, Speedometer Driving	J.6	1	
C.909	Piece, Distance, behind Speedometer Driving Gear	J.7	1	
C.1854	Sleeve, Distance, on Mainshaft	J.8	1	
C.2679	Sleeve, Synchronising, 2nd Speed	J.9	1	
C.900	Spring, in 2nd and 3rd/Top Speeds Synchro Sleeves	J.10	12	
C.922	Ball in 2nd and 3rd/Top Speeds Synchro Sleeves	J.11	13	
C.901	Plunger in 2nd Speed Synchro Sleeve	J.12	1	
C.2040	Wheel, Gear, 1st Speed	J.13	1	
C.4125	Wheel, Gear, 2nd Speed	J.14	1	
C.4123	Wheel, Gear, 3rd Speed	J.15	1	
C.1850	Roller, Needle, in 2nd and 3rd Speed Gear Wheels	J.16	82	
C.1849	Plunger, in Mainshaft, locking 2nd and 3rd Speed Gear Wheels	J.17	2	
C.1324	Spring under Plungers	J.18	2	
C.2678/1	Washer, Thrust, front and rear of 2nd and 3rd Speed Gear Wheels (.471"/.472" thick)	J.19	2	
C.2678/2	Washer, Thrust, front and rear of 2nd and 3rd Speed Gear Wheels (.473"/.474" thick)		2	
C.2678/3	Washer, Thrust, front and rear of 2nd and 3rd Speed Gear Wheels (.475"/.476" thick)		2	
C.4122	Sleeve, Synchronising, 3rd/Top Speeds	J.20	1	
C.2568	Sleeve, Operating, 3rd/Top Speeds	J.21	1	
C.903	Shim, for Synchro Sleeve (.006" thick)		As req'd.	
C.914	Shim, for Synchro Sleeve (.028" thick)		As req'd.	
C.2685	CONSTANT PINION SHAFT ASSY.	J.22	1	
C.6792	CONSTANT PINION SHAFT ASSY. NOTE.—When Shaft C.6792 is supplied, the following must be included :—C.6745 Oil Thrower; C.1838/1 Circlip; C.2109 Washer; C.2111 and C.2119 Shims.		1	SPECIAL EQUIPMENT FOR COMPETITION PURPOSES ONLY.
C.1843	Bearing, Roller, inside Shaft	J.24	1	
C.2121	Thrower, Oil	J.25	1	
C.2066	Nut, locking Bearing to Shaft	J.26	1	
C.2067	Circlip, securing Locknut	J.27	1	
C.2070	REVERSE SPINDLE	J.28	1	
C.2044/1	Gear, Reverse (complete with Bush)	J.29	1	Fitted from Gearbox No. JH.10 to JH.2182.
C.2069	Bush in Reverse Gear	J.30	1	
C.2044/2	Gear, Reverse (complete with Bush)		1	Fitted to Gearbox No. JH.2183 and subs.
C.3383	Bush in Reverse Gear		2	
C.1893	Lever, operating Reverse Gear	J.31	1	
C.1899	Pin, Fulcrum, for operating Lever	J.32	1	
C.777	Nut, Slotted, securing Fulcrum Pin	J.33	1	
FW.106/T	Washer, Plain, under Slotted Nut	J.34	1	
L.103/8U	Pin, Split, securing Fulcrum Pin and Reverse Slipper	J.35	2	
C.866	Slipper, Reverse	J.36	1	
C.1856	COUNTERSHAFT	J.37	1	
C.2041	Gear, 1st Speed (on Counter)	J.38	1	
C.1864	Ring, Retaining, at rear of Needle Rollers	J.39	2	
C.918	Roller, Needle	J.40	58	
C.1861	Washer, Thrust, Inner, at rear end of Counter, adjacent to Needle Rollers	J.41	1	
C.1862	Washer, Thrust, Outer, at rear end of Counter (.156" thick)	J.42	As req'd.	To eliminate end float on the Countershaft, select the Washer which has the desired thickness.
C.1862/1	Washer, Thrust, Outer, at rear end of Counter (.159" thick)	J.42	As req'd.	
C.1862/2	Washer, Thrust, Outer, at rear end of Counter (.162" thick)	J.42	As req'd.	
C.1862/3	Washer, Thrust, Outer, at rear end of Counter (.152" thick)	J.42	As req'd.	
C.1862/4	Washer, Thrust, Outer, at rear end of Counter (.164" thick)	J.42	As req'd.	
C2043	Ring, Retaining, on outer end of Front Needle Rollers	J.43	1	
C.2042	Washer, Thrust, Inner, at front end of Counter	J.44	1	
C.1859	Washer, Thrust, Outer, at front end of Counter	J.45	1	
C.2045	Wheel, Constant	J.46	1	
C.2046	Gear, 3rd Speed	J.47	1	
C.2047	Gear, 2nd Speed	J.48	1	
C.2048	Ring, Split, locating Constant Wheel	J.49	2 halves.	
C.2072	Circlip, positioning 3rd Speed Gear and Constant Wheel (Seeger 1 $\frac{3}{4}$ " ext.)	J.50	2	
C.5826	Wheel, Constant		1	SPECIAL EQUIPMENT FOR COMPETITION PURPOSES ONLY.

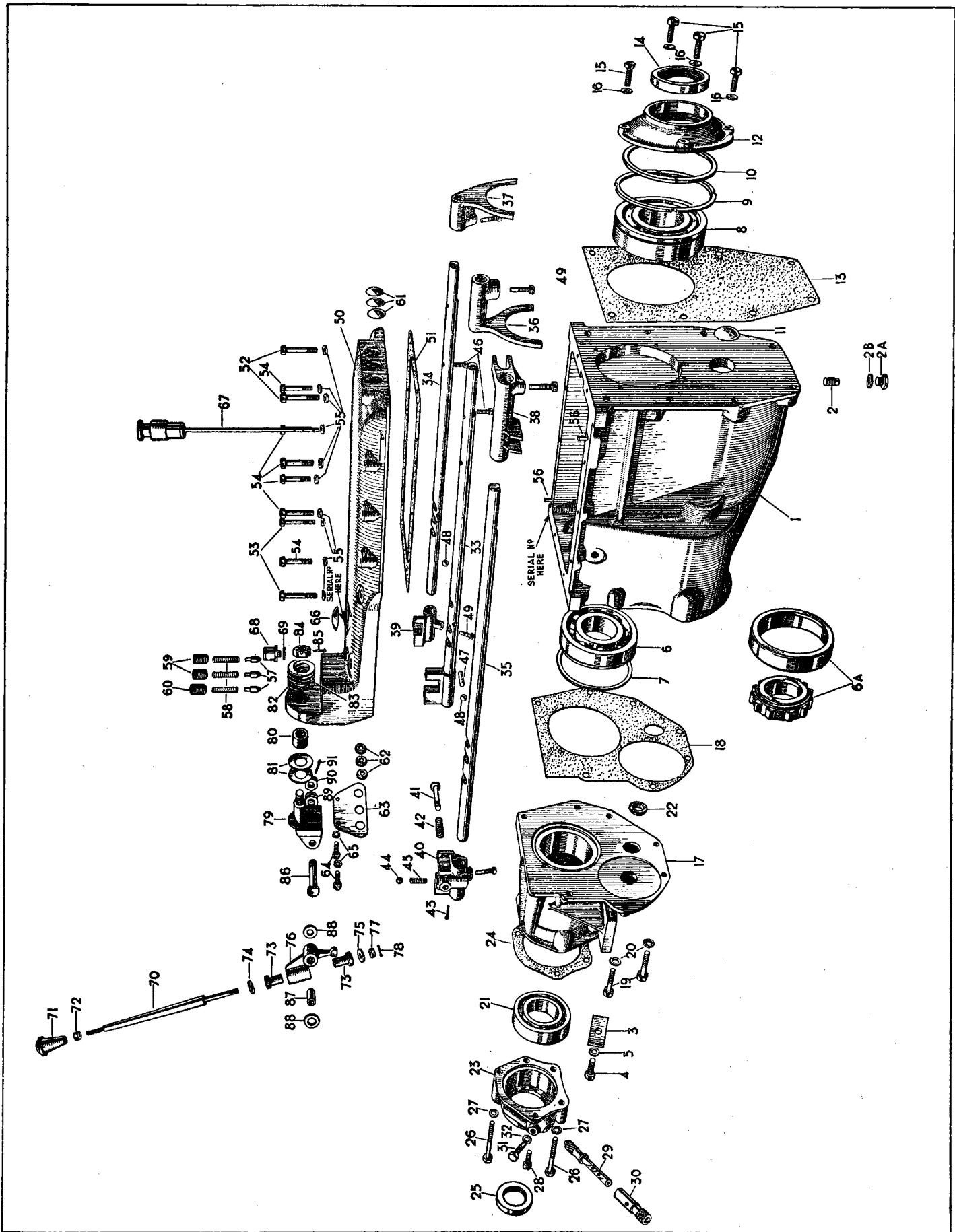


PLATE G.

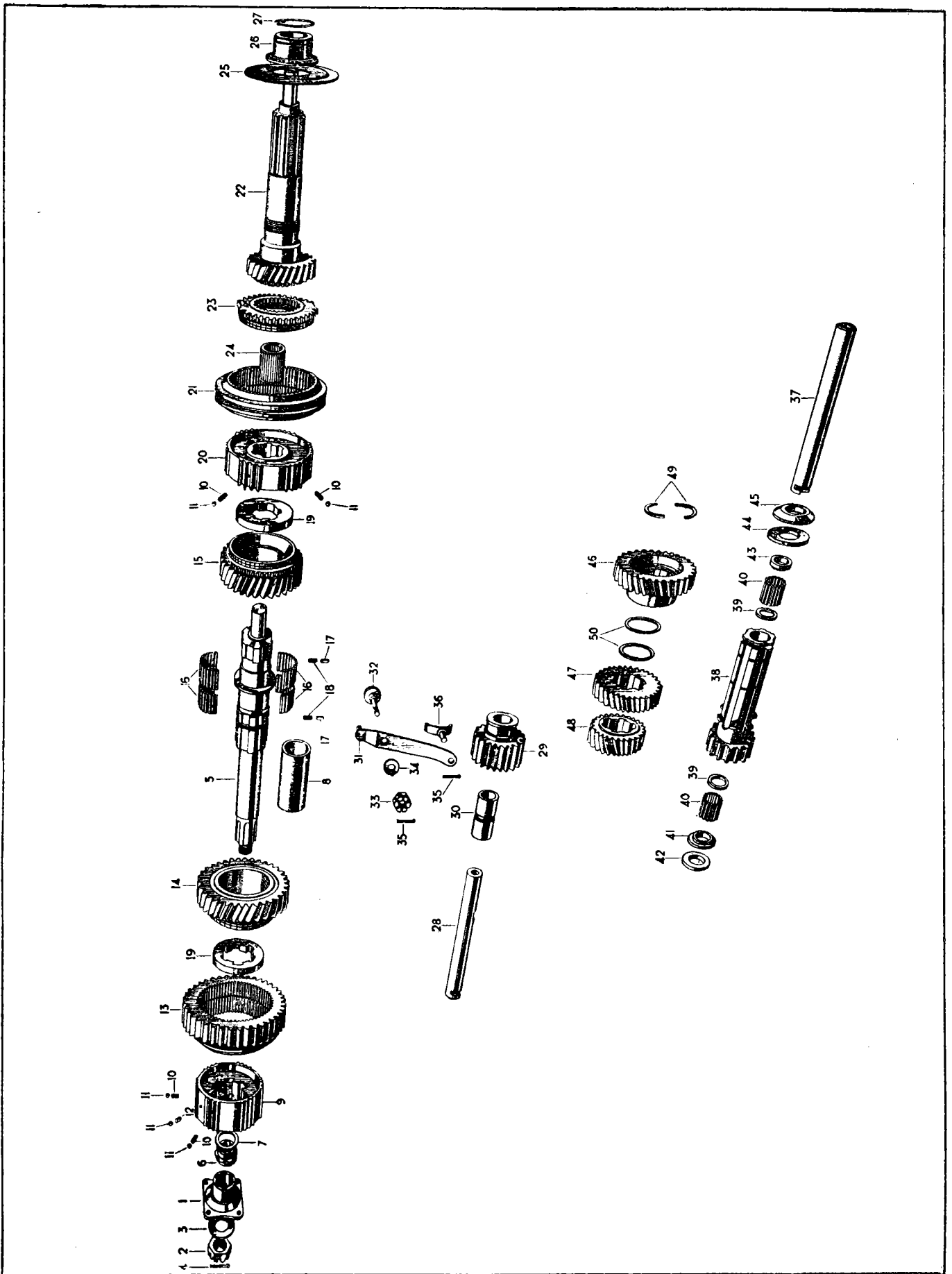


PLATE J.

GEARBOX ("J.L." SERIES)

Part No.	Description.	Plate No.	No. per Unit.	Remarks.
C.6776	GEARBOX ASSEMBLY		1	FROM SERIAL No. JL.8806 commencing at Chassis No. 660935 and subs. 669003 and subs. 671797 and subs. 679215 and subs.
C.2071	Casing only		1	
C.799	Drain Plug at bottom of Casing		1	
C.785	Washer (Fibre) on Drain Plug		1	
C.857	Plate, locking Counter and Reverse Shafts		1	
FS.205/7D	Screw, Set, securing Locking Plate		1	
FG.105/X	Washer, Spring, on Setscrew		1	
C.1845	Bearing, Ball, for Mainshaft (Hoffman M.S.12½K)		1	
C.1855	Circlip, securing Mainshaft Bearing		1	
C.1838	Bearing, Ball, for Constant Pinion Shaft (Hoffman 340K)		1	
C.1841	Collar, between Casing and Circlip		1	
C.1840	Circlip, securing Constant Pinion Shaft Bearing		1	
C.920	Washer (Fibre) at front end of Countershaft		1	
C.1833	FRONT END COVER		1	
C.1834	Gasket, between Front Cover and Casing		1	
C.6738	Seal, Oil		1	
C.359	Screw, Set, securing Cover to Casing		4	
FW.105/E	Washer (Copper) on Setscrews		4	
C.837	Wire, locking Setscrews		2	
C.6767	REAR END COVER		1	
C.1866	Gasket, between Rear End Cover and Casing		1	
SF.105/9D	Screw, Set, securing Rear End Cover to Casing		7	
FG.105/X	Washer, Spring, on Setscrews		7	
C.921	Washer (Felt) at rear end of Countershaft		1	
C.859	Seal, Oil		1	
C.843	Gear, Speedometer Driven		1	
C.858	Bearing, for Speedometer Driven Gear		1	
C.846	Screw, locking Bearing in Cover		1	
FG.105/X	Washer, Spring, on Screw		1	
	STRIKING GEAR			
C.907	Rod, Striking (1st/2nd Gears)		1	
C.877	Rod, Striking (3rd/Top Gears)		1	
C.878	Rod, Striking (Reverse Gear)		1	Fitted from Gearbox JL.8806 to JL.13153
C.7358	Rod, Striking (Reverse Gear)		1	Fitted to Gearbox JL.13154 and subs.
C.904	Fork, Change-Speed (1st/2nd Gears)		1	
C.872	Fork, Change-Speed (3rd/Top Gears)		1	
C.913	Fork, Change-Speed (Reverse Gear)		1	
C.905	Selector (3rd/Top Gears)		1	
C.1910	Selector (Reverse Gear)		1	
C.1909	Plunger in Reverse Selector		1	
C.2022	Spring on Plunger		1	
C.914	Shim under Spring		1	
AS.102/4D	Screw, Set, in Reverse Selector, adjusting tension on Spring		1	
AN.102/L	Nut, locking Setscrew in position		1	
L.103/7U	Pin, Split, securing Plunger in Reverse Selector		1	
C.922	Ball, locking Plunger		1	
C.900	Spring under Ball		1	
C.882	Pin, Stop, on 1st/2nd and 3rd/Top Striking Rods		2	
C.874	Roller for Interlock (in 1st/2nd Striking Rod)		1	
C.923	Balls for Interlock (in 3rd/Top and Reverse Striking Rods)		2	
C.844	Screw, Set (Taper), securing Forks and Selectors		5	
C.837	Wire, locking Taper Screws and Stop Pins		As req'd.	

GEARBOX ("J.L." SERIES)

Part No.	Description.	Plate No.	No. per Unit.	Remarks.
C.1927	TOP COVER		1	Fitted from Gearbox JL.8806 to JL.13153
C.6878	TOP COVER		1	Fitted to Gearbox JL.13154 and subs.
C.860	Gasket, between Top Cover and Casing		1	
FB.105/15D	Bolt, securing Cover		2	
FB.105/14D	Bolt, securing Cover		2	
FB.105/12D	Bolt, securing Cover		6	
FG.105/X	Washer, Spring, on Bolts		10	
OD.105/6H	Dowel, in Casing, positioning Top Cover		2	
C.848	Plunger, engaging Striking Rods		3	
C.845	Spring, at top of Plungers		3	
C.849	Screw, Grub, applying tension to Plungers for 1st/2nd and 3rd/Top Striking Rods		2	
C.884	Screw, Grub, applying tension to Plunger for Reverse Striking Rod		1	
C.837	Wire, locking Grub Screws		As req'd.	
C.873	Plug in front end of Cover		3	
C.929	Washer (Felt) in rear end of Cover		3	
C.880	Plate, covering Felt Washers		1	
FS.104/3D	Screw, Set, securing Cover Plate		2	
FG.104/X	Washer, Spring, on Setscrews		2	
C.315	Plug, Core, on top of Cover		1	
C.2675	Dipstick		1	
C.841	Plug, Breather, on top of Cover		1	
C.930	Washer (Fibre) on Breather Plug		1	
C.927	Screw, Grub, in side of Cover, for insertion of Interlock Balls and Roller		1	
C.2462	CHANGE-SPEED LEVER		1	
C.4054	CHANGE-SPEED LEVER		1	REQUIRED ONLY WHEN RADIO IS FITTED
C.2291	Knob for Lever		1	
C.1928	Nut, locking Knob to Lever		1	
C.1915	Bearing, Flexible, housing Change-Speed Lever in Selector Lever		2 halves	
C.1919	Washer at top of Flexible Bearing		1	
C.1904	Washer at bottom of Flexible Bearing		1	
C.1918	Lever, Selector, housing Change-Speed Lever		1	
FN.405/L	Nut, Slotted, securing Change-Speed Lever in Selector Lever		1	
L.103/8U	Pin, Split, securing Slotted Nut		1	
C.1913	Jaw, Pivot, for Selector Lever		1	
C.1907	Bush for Pivot Jaw		1	
C.1894	Washer, Thrust, on Pivot Jaw		2	
C.1914	Washer, Locking, on Pivot Jaw		1	
C.1905	Washer, Spring, on Pivot Jaw		1	
FN.407/L	Nut, Slotted, securing Pivot Jaw		1	
L.103/8U	Pin, Split, securing Slotted Nut		1	
C.1912	Pin, Pivot, mounting Selector Lever in Pivot Jaw		1	
C.1906	Bush, in Selector Lever, for Pivot Jaw		1	
C.1908	Washer, Thrust, at each side of Selector Lever		2	
C.1929	Washer, Spring, between Thrust Washer and Pivot Jaw		1	
FN.407/L	Nut, Slotted, securing Pivot Pin		1	
L.103/8U	Pin, Split, securing Slotted Nut		1	
C.885	FLANGE ON MAINSHAFT		1	
C.840	Nut, Slotted, securing Flange		1	
C.925	Washer, Plain, under Slotted Nut		1	
L.104/12U	Pin, Split, securing Slotted Nut		1	
C.4994	MAINSHAFT		1	
C.910	Gear, Speedometer Driving		1	
C.909	Piece, Distance, behind Speedometer Driving Gear		1	
C.3679	Sleeve, Synchronising, 2nd Speed		1	Fitted from Gearbox JL.8806 to JL.13833
C.7480	Sleeve, Synchronising, 2nd Speed (c/w. Stop Pin)		1	Fitted to Gearbox JL.13834 and subs.
C.900	Spring, in 2nd and 3rd/Top Synchro Sleeves		12	
C.922	Ball, in 2nd and 3rd/Top Synchro Sleeves		13	
C.901	Plunger in 2nd Speed Synchro Sleeve		1	

GEARBOX ("J.L." SERIES)

Part No.	Description.	Plate No.	No. per Unit	Remarks.
MAINSHAFT (continued)				
C.2040	Gear, 1st Speed		1	
C.4125	Gear, 2nd Speed		1	
C.4123	Gear, 3rd Speed		1	
C.1850	Roller, Needle, in 2nd and 3rd Speed Gears		82	
C.1849	Plunger, in Mainshaft, locking 2nd and 3rd Speed Gears		2	
C.1324	Spring under Plungers		2	
C.2678	Washer, Thrust, front and rear of 2nd and 3rd Speed Gears		2	
C.2678/1	Washer, Thrust, front and rear of 2nd and 3rd Speed Gears		2	
C.2678/2	Washer, Thrust, front and rear of 2nd and 3rd Speed Gears		2	
C.4122	Sleeve, Synchronising, 3rd/Top Speeds		1	
C.901	Plunger in 3rd/Top Synchro Sleeve		2	
C.922	Ball for Plungers		2	
C.4049	Sleeve, Operating, 3rd/Top Speeds		1	
C.903	Shim for Synchro Sleeve (.006" thick)			As req'd.
C.914	Shim for Synchro Sleeve (.028" thick)			As req'd.
CONSTANT PINION ASSEMBLY				
C.6751			1	
C.1843	Bearing, Roller, inside Shaft		1	
C.2121	Thrower, Oil		1	
C.1838/1	Circlip for Constant Pinion		1	
C.2109	Washer for Constant Pinion		1	
C.2110	Shim for Constant Pinion			As req'd.
C.2111	Shim for Constant Pinion			As req'd.
REVERSE SPINDLE				
C.2070			1	
C.2044/2	Gear, Reverse (complete with Bush)		1	
C.1893	Lever, operating Reverse Gear		1	
C.1899	Pin, Fulcrum, for Operating Lever		1	
C.777	Nut, Slotted, securing Fulcrum Pin		1	
FW.106/T	Washer, Plain, under Slotted Nut		1	
L.103/8U	Pin, Split, securing Slotted Nut and Reverse Slipper		2	
C.866	Slipper, Reverse		1	
C.4284	Ring, Sealing (Cord) on Reverse Spindle		1	
COUNTERSHAFT				
C.1856			1	
C.2041	Gear, 1st Speed (on Counter)		1	
C.1864	Ring, Retaining, at rear of Needle Rollers		2	
C.918	Roller, Needle		58	
C.1861	Washer, Thrust, Inner, at rear end of Counter adjacent to Needle Rollers		1	
C.1862	Washer, Thrust, Outer, at rear of Counter (.156" thick)		1	} To eliminate end float on the Countershaft, select the Washer which has the desired thickness.
C.1862/1	Washer, Thrust, Outer, at rear of Counter (.159" thick)		1	
C.1862/2	Washer, Thrust, Outer, at rear of Counter (.162" thick)		1	
C.1862/3	Washer, Thrust, Outer, at rear of Counter (.152" thick)		1	
C.1862/4	Washer, Thrust, Outer, at rear of Counter (.164" thick)		1	
C.2043	Ring, Retaining, on outer end of Front Needle Rollers		1	
C.2042	Washer, Thrust, Inner, at front end of Counter		1	
C.1859	Washer, Thrust, Outer at front end of Counter		1	
C.2045	Wheel, Constant		1	
C.2046	Gear, 3rd Speed Countershaft		1	
C.2047	Gear, 2nd Speed Countershaft		1	
C.2048	Ring, Split, locating Constant Wheel		2	halves
C.2072	Circlip, positioning 3rd Speed Gear and Constant Wheel		2	
C.4285	Ring, Sealing (Cord), on Countershaft		1	